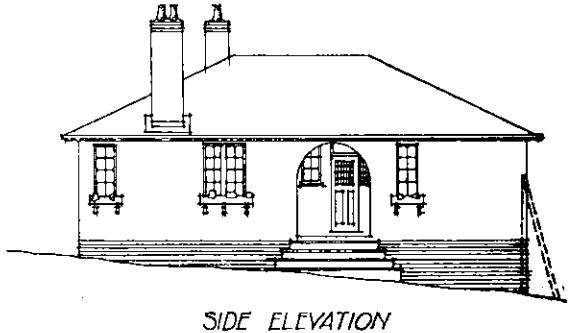
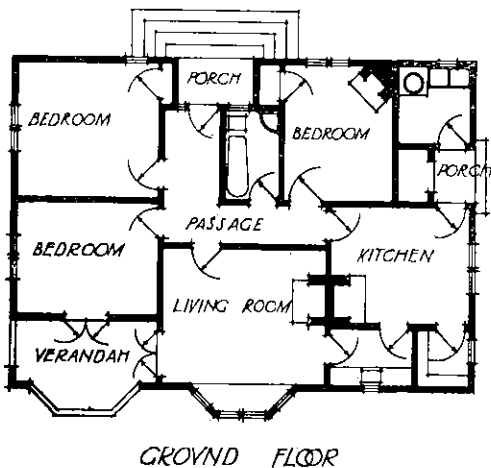
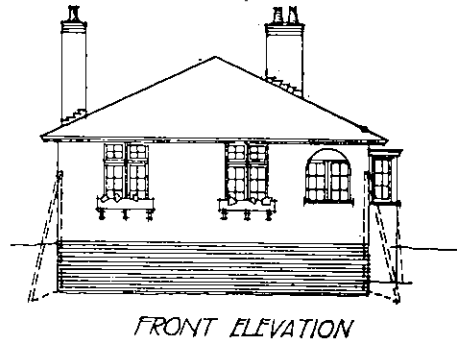
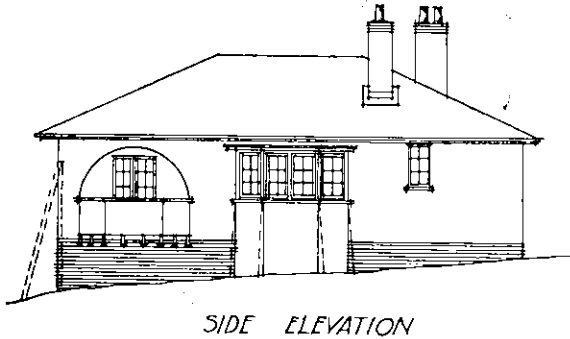


proach "Kope's." Likewise I have heard of "green" concrete, but this is the first time I have seen it shown on a plan—and such a vivid green. Why such unnatural and inharmonious colouring? The buttresses at the angles of the cottage would have been better omitted from the elevations as they were from the plan.

"Roma."—In plan "Roma" has got nearer to a workman's cottage than any of the other designers. He, however, also disqualifies himself by colouring his drawings. It would be impossible to reproduce

sign. He is a good mechanical draughtsman, and has gone to much trouble with his drawings. The plan of "Economy" has not the extreme inconvenience of "Le Premier," but bedrooms No. 2 and 3 are rather far from the bathroom.

"Le Premier."—As an example of an inconvenient house, this plan would be hard to beat. For instance, if it were necessary to go from bedroom No. 2 to the bathroom one would have to pass through the kitchen, the living room, and sixteen feet of passage to get there. Another interesting



Tracing of "Kope's" Design. Stuart Hedley, with Mr. L. D. Piper, of Auckland. (See note at end of Assessor's Report).

such elevations in monotone with effect—a fact that is of great importance to the publishers of *Progress*, who did not make the following condition, "Unless otherwise stated, drawings are to be in black and white only," without a good reason.

"Akonga."—This design is inartistic, and the draughtsmanship is hard, although otherwise good. The living room, which faces S.E., would get no sun. The rooms are not placed badly in relation to one another.

"Economy."—Judging by the draughtsmanship and other likenesses the author of "Economy" and "Le Premier" is one and the same person. I would advise him in the future to concentrate on one de-

tour would be a midnight journey from bedroom No. 3 to the w.c., which would entail a distance of nineteen feet of passage, across the living room, through the kitchen and through the scullery, and a final distance of about ten feet in the cold open air from the back door to the w.c. The only alternate route would be via the passage, living room, verandah, and seventy feet around the house. "Le Premier" marks his w.c. "lavt.," which is, according to the dictionary, "a place to wash in."

"Hurried."—"Hurried" has not submitted a much more elaborate house. The planning is not good, it being necessary to go through the hall from the kitchen to the 10 feet x 10 feet scullery, and the