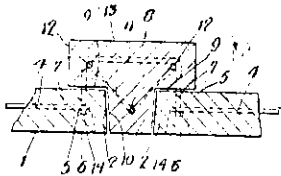
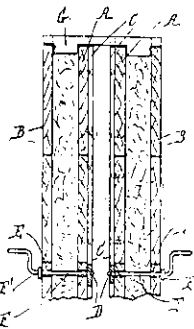


and recesses. Framing-members such as studs and corner-pieces are formed with recesses lengthwise of the member, and are provided with metal rods embedded lengthwise therein, and also with cross bolts embedded



therein, the latter being bent around and between said rods and emerging from the members in the recesses. The framing members have bevelled faces, against which the bevelled ends of the slabs fit, the ends of the cross-arms passing through the holes in the slabs.

Cavity Concrete-Wall Moulding Frame.—A patent, No. 43,225 has been taken out by P. J. Beaton, carpenter, of Wadestown, Wellington. In carrying out this invention the frames used are formed in the usual manner by boards fastened together in any approved way so as to form plates of the required superficial area. The inner plate of each pair of plates required to form the mould on each side of the wall-cavity is provided with metallic bar strips secured down its inside face, at any approved distances apart, and at suitable points in the length of each of such strips screw tapped holes are made and disposed coinci-



dently with apertures made in such plate, and also with apertures made in the outer plate of the corresponding mould. Threaded pins or set screws are provided to pass in through the apertures in the outside plate and to screw into the threaded holes in the metal bars of the inside plate, and these pins or set-screws, by their adjustment, serve the position and hold the inner plate firmly at the required distance in relation to the outer plate. Such pins are arranged at approved positions in the surface area of the plates, and may be varied in number in accordance with the sizes of the plates employed.

The London Guild of Builders.

Mr. G. D. H. Cole, writing from the Labour point of view on the London Guild of Builders, says: "The Guild absolutely declines to work for, or to make, profit; it offers to build for the public at cost price, this price including the cost of materials and of labour at the hourly rate, plus 10 per cent. on these costs to meet (a) the cost of plant and administration, and (b) the cost of guaranteeing to every worker employed by the Guild a full week's wages even if weather conditions compel him to stop work for part of the time." The Guild declines to work on an ordinary profit-and-loss basis. Mr. Cole states that "the essential principle of the Building Guilds, which now exist in a considerable number of centres, is that the public will best be served if all those who are required for the actual work of building—architects, technicians, administrators, craftsmen, and labourers—bind themselves together into single fraternity, with the sole object of building houses and doing all sorts of constructional work, and not with the object of realising any profit at all."

P & B ASPHALT SATURATED FELT

We have good supplies of P & B Asphalt Saturated Felt, which is an excellent product and infinitely superior to Tarred Felt.

Odourless, and proof against drying out with age, P & B Felt acts as a waterproof cushion, and is especially valuable

For use under Slate, Iron, Tile or Shingle Roofs and Ceilings.

P & B Asphalt Saturated Felt is clean, pliable, convenient and vermin proof.

PLACE YOUR ORDER NOW.

No. 2 Felt, 27/6 per roll, covering 324 sq. feet

No. 3 Felt, 28/6 per roll, covering 500 sq. feet

Aubrey Gualter & Co.,
WELLINGTON.

McCarthy's Family Hotel

Taupo Quay,
WANGANUI

C. J. MCCARTHY, PROPRIETOR

Steel Constructional Work for Architects, Contractors, Etc.

Joists, Beams, Stanchions, Compound Girders,
Solid Steel Columns, Steel Roof Trusses
Galvanised Roofing Iron, Ridging, Spouting,
Downpipes, etc.

Full stocks. Quick deliveries.

A. & T. BURT, LTD.

Auckland, Wellington, Christchurch, Timaru,
Dunedin, Invercargill.

London Office: Eldon St. House, E.C.