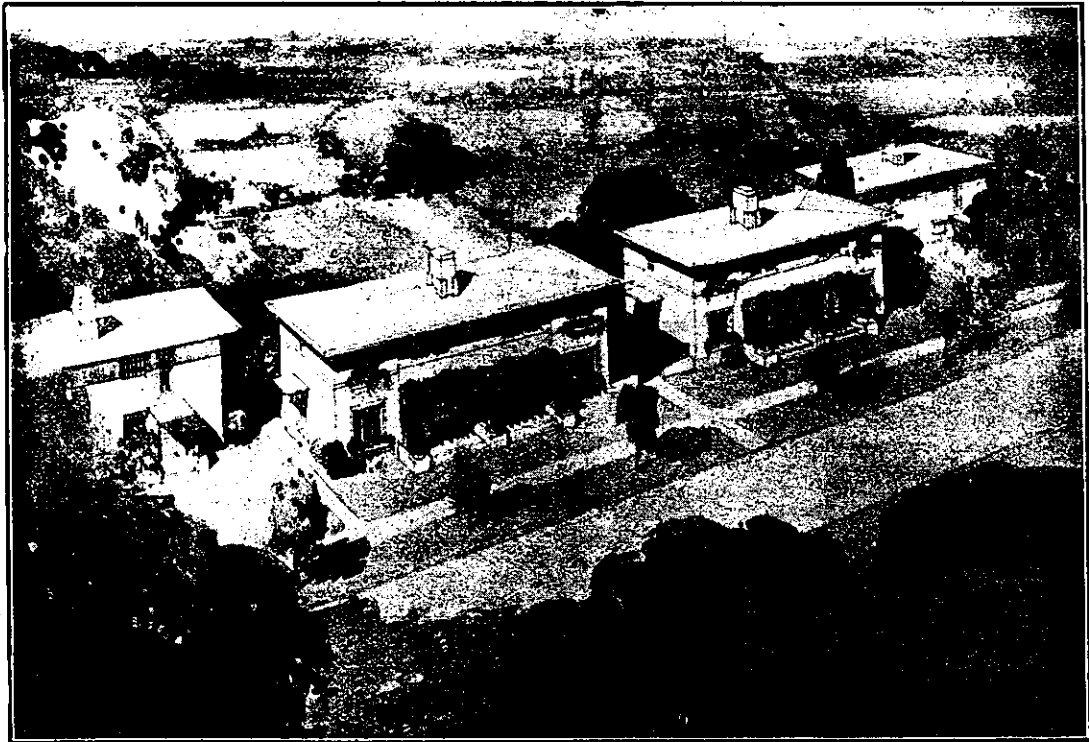


a clubhouse will be provided in the form of reading and writing rooms, billiards and games rooms, restaurant, and possibly living-in quarters. In con-

to the development of the scheme. Added interest will be given this portion of the lay-out by leaving two rows of trees along the fronts of the houses on



View of a Group of Cottages. The Material used throughout, including Roofs, is Concrete.



Perspective View of Semi-detached Cottages.

junction with the club an open-air swimming bath is projected, situated in a corner of the Park.

A large orchard on the N.E. boundary of the site will be preserved as far as possible, and only those trees will be removed which are absolutely necessary

both sides of the road, leaving the remainder to be incorporated in the private gardens of the houses concerned.

The coppice on the south side of the church green has been utilised in the lay-out to mark the junction