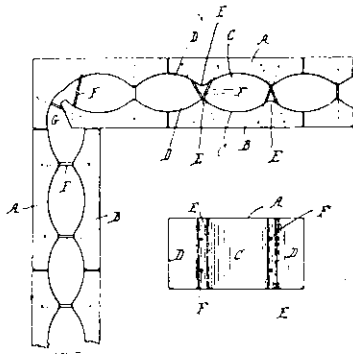
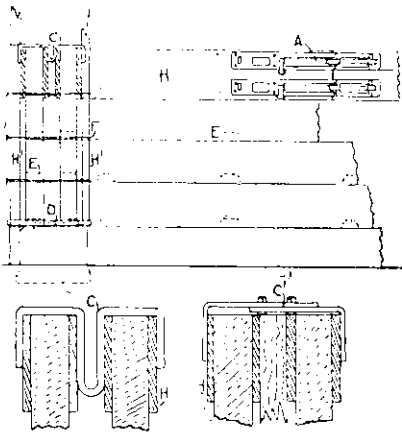


them, by means of wire ties extending across between the ribs and embedded at their ends into the respective



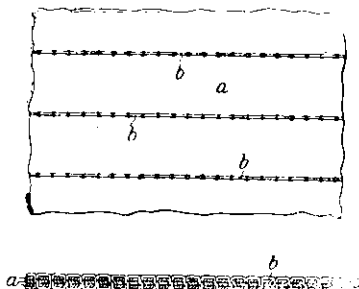
members. These wire ties are embedded in the block during the moulding thereof.

Concrete Construction Appliances. A patent, No. 42,593, has been taken out by W. J. Dyas, Kensington, Dunedin, which comprises the combination of special bolts for securing the boards end to end, also special bolts for securing the boards at an angle. The invention also



consists of special cramps, either in one or several pieces, for adjusting to various thickness of wall or walls. Bands in one piece or in more for the purpose of adjusting to the sizes of walls or studs, for supporting studs that in their turn support the boxes or formes, are also employed.

Ply Board or Sheet Manufacture.—A patent, No. 42,332, has been taken out by S. E. Saunders, Whippingham, Isle of Wight, England, which comprises a plural-



ity of layers of thin board or veneer united together by means of stitching of thread, twine or the like. Grooves may be formed in which the stitches are laid,

Malthoid—

"CHEAPER BECAUSE MORE RELIABLE."

That is the MALTHOID experience of builders who know, of owners who have to "foot" the bill. MALTHOID, the well-tryed-out roofing material, has successfully displaced iron and tiles.

CHEAPER in the first instance than either of these heavy materials, BETTER in the long run against the worst climatic conditions, MALTHOID is the only roofing worth considering.

MALTHOID is free from fish oil or animal fat, and is a scientifically fabricated roofing material.

Write or call about Malthoid. We will gladly furnish fullest particulars.

AUBREY GUALTER & CO.,

Corner Featherston & Brandon Streets,

Wellington.

McCarthy's Family Hotel

Taupo Quay,
WANGANUI

C. J. MCCARTHY, PROPRIETOR

Steel Constructional Work for Architects, Contractors, Etc.

Joists, Beams, Stanchions, Compound Girders,
Solid Steel Columns, Steel Roof Trusses,
Galvanised Roofing Iron, Ridging, Spouting,
Downpipes, etc.

Full stocks. Quick deliveries.

A. & T. BURT, LTD.

Auckland, Wellington, Christchurch, Timaru,
Dunedin, Invercargill.

London Office: Eldon St. House, E.C.