

On clause 7, defining the constitution of the Housing Board, Mr. Massey agreed to an amendment under which the superintendent and deputy superintendent of workers' dwellings shall hold office on the board until successors are appointed, and that the board shall include an architect and engineer.

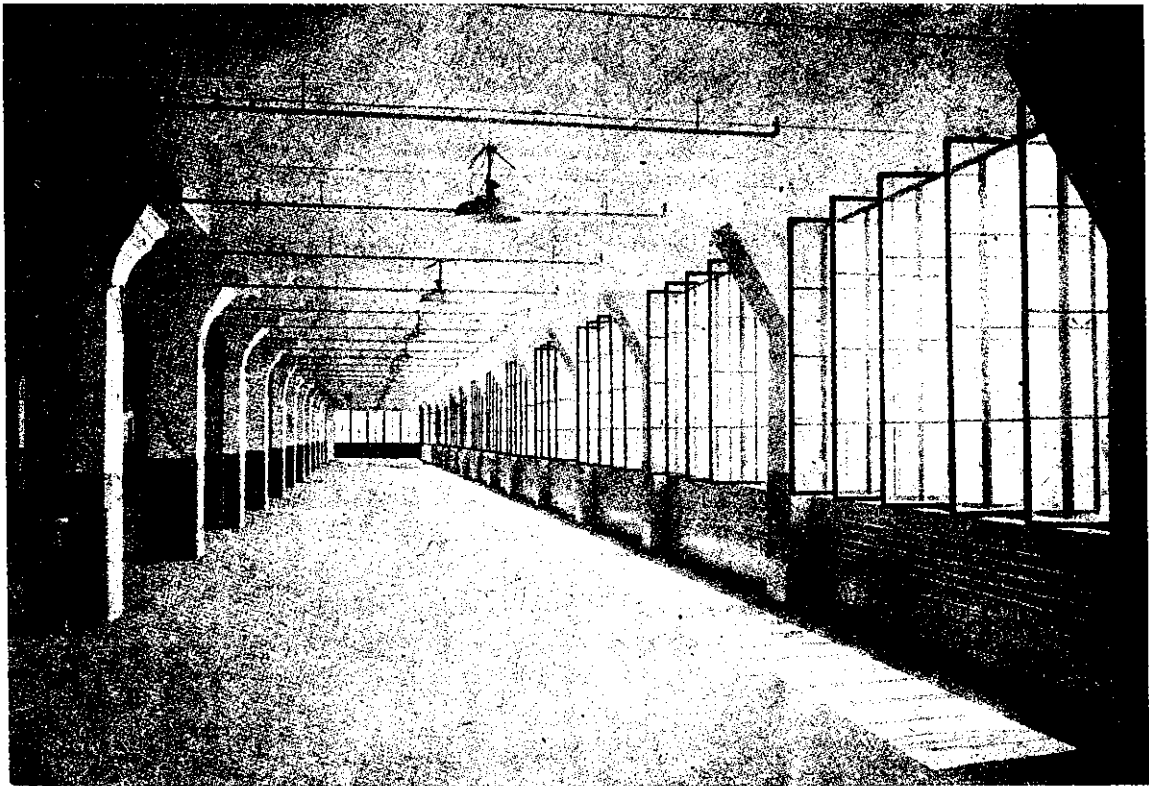
* * * *

In connection with the housing question it is interesting to note that four Dunedin architects, viz.:—Messrs. Salmond & Vanes, Anson, Mowat and Leslie Coombs have been commissioned to design 10 houses each for the City Corporation.

and Ehrenfried Company, Ltd., to assist in the improvement and beautification of the town. The only condition of the gift is that the portion of the land that is not required for road improvements shall be beautified by the erection of rockeries, or by some other scheme, and maintained for the free use of the public.

* * * *

The Christchurch City Council last month accepted a scheme for the acquisition of sufficient land for the erection of at least two hundred houses. Provision is made for sale of the houses, when erected, on easy terms, spread over a varying period of



Interior View of a Modern Factory.

The Hillside (Dunedin) branch of the Amalgamated Society of Railway Servants adopted the following motion unanimously: "We view with deep concern and emphatic disapproval the proposal of a wealthy syndicate to build a treatre in Dunedin costing approximately £40,000, during the present acute state of the housing problem. We further consider that while our returned soldiers are, owing to the scarcity, paying inflated prices for their homes, the wealth (much of which has been amassed during the war) of such syndicates should be used to relieve the present distress by building homes for the people instead of places of amusement."

A gift of two sections of land valued at £600 has been made to the Thames Borough Council by the Hon. Arthur M. Myers, M.P., and the Campbell

years, to suit the circumstances of the applicants. It was stated that the expenditure involved was between £150,000 and £200,000. There was plenty of land within easy access of Cathedral Square which could easily fill the bill.

* * * *

A Wanganui telegram states that the Society of Friends has purchased four dwellings, with land approximating thirty acres, on St. John's Hill, adjoining Virginia Lake. They intend to develop a boarding school and Quaker settlement generally.

* * * *

The clergy in Christchurch are really taking an interest in industrial strife. According to a Christchurch daily paper, it is reported that at a recent Synod meeting the question was dealt with in a re-