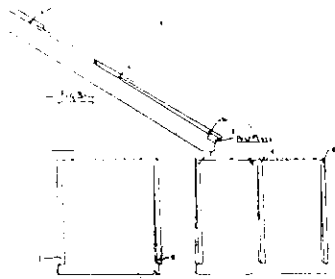


usual in tiles, to hang same to a batten, there is made at each side of the tile or plate, a distance back from bottom edge to suit the lap of tile or plate, a lug or projection as



shown in drawing the depth of the thickness of tile or plate not less than 1 inch in width, or half the thickness of the rafter it is placed on, and tapering to nothing at the back as shown in drawing.

Building Notes.

AUCKLAND.

The Auckland Education Board accepted a tender early this month for the erection in brick of a school building at Vauxhall at £4497.

The site purchased some time back by the Health Department adjacent to the hospital in Pitt Street is now to be used for additional accommodation for St. Helen's Maternity hospital. Plans are now in course of preparation, the idea being to erect a large hospital on up-to-date lines, and use the old building as a nurses' home.

Messrs Wilson and Moodie called for tenders for the erection of a concrete office building for the N.Z. Co-operative Dairy Co., Ltd., last month. Messrs Holman and Moses called for tenders for a brick store in Stanley Street. Mr. G. W. Allsop also called for tenders for office block of re-inforced concrete and brick in Shortland Street. Mr. J. Routley called for tenders for St. John's Presbyterian Church at Papatoetoe.

Messrs Chilwell and Trevithick invited tenders for alterations to R. and W. Hellaby's shop, Newmarket, early this month.

Messrs Wade and Hunt invited tenders for alterations to residence Carlton Gore Road. Mr. F. A. Browne also invited tenders for a house in Herbert Street, and Mr. J. Routley invited tenders for a house in wood at Pukekohe.

CAMBRIDGE.

Tenders were called for by Mr. J. Farrell for additions to District High School in wood, late last month.

CHRISTCHURCH.

It is proposed to erect winter gardens on Cashmere Hills at a cost of £5000.

The Association of the Love of God has taken the first step in the erection of St. Matthew's Victory Memorial School, which has been designed for them by Messrs J. S. and M. J. Guthrie. They called Home £500 for patent inter-locking tiles which are to be used on the building.

The Christ's College Committee for the War Memorial have started a fund which they hope will reach £3000. Mr. C. C. Wood has been appointed architect for the work.

The City Council have decided to erect an additional Administrative block on the site where the Scott statue is situated at present.

Messrs Collins, Harman and Munnings invited tenders for the erection of a Curator's house for the Domain Board.

Messrs J. S. and M. J. Guthrie invited tenders for a Wool Store at Addington for the National Mortgage Co., Ltd. The same architects have in hand a residence in brick at Fendalton.

LIFTS

There are many Points of Superiority in the High-grade Lifts for

PASSENGERS or GOODS

Made by

A. & P. STEVEN, Provanside Engine Works, GLASGOW

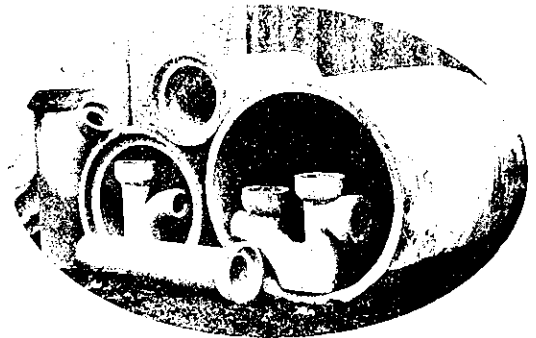
whose equipment has an enviable reputation for Reliability and Efficiency. Installed for H.M. the King, the Admiralty, Glasgow Corporation, and many other users who insist on the best obtainable.

Further information, Catalogues and Quotations from the Sole Agents:

TOLLEY & SON, LTD

CHEWS LANE, WELLINGTON

— P.O. Box 685, —



CEMENT PIPES

have proved the best for SEWAGE and ROAD CULVERTS. In sizes from 1 inches to 12 inches in diameter, STRONG and EVERLASTING. Improve with age. We make Concrete Posts and Strainers, Pig Troughs, Salt Pans, Garden Rollers, Flags, etc., etc. Factories: Masterton, Hastings, and Wairoa. Full particulars -

The Cement Pipe Co., Ltd., Masterton.

TRADE **BRUNNER** MARK

FIRECLAY GOODS

of all descriptions suitable for
every purpose

The Tyneside Proprietary Ltd.

Owners Brunner Collieries & Works.

UNION CHAMBERS, WELLINGTON