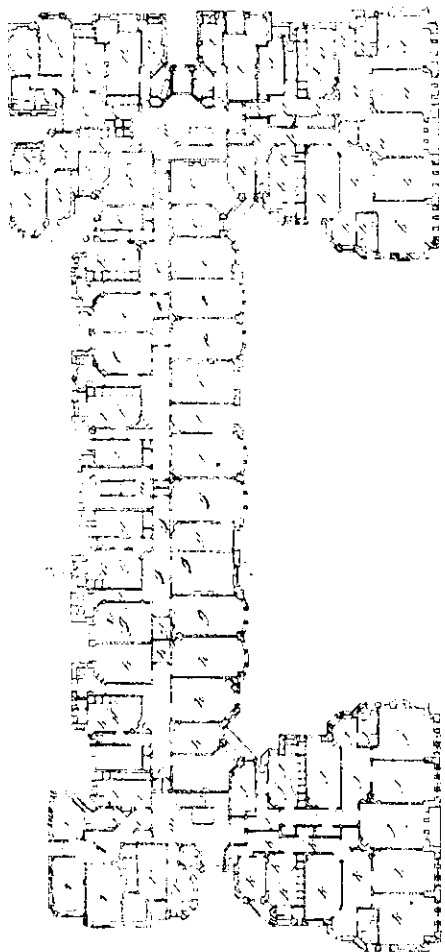


the solid material containing calcium fluoride is employed for treating a further batch of the first flue-dust as above described.

Flats and the Like Residential Structures.—A patent, No. 40778, has been taken out by Abraham Davis, of London. According to the invention, a building can be constructed with a single central kitchen, centrally or otherwise suitably situated—say, on the top story of the building or other convenient position—and with a private lift-shaft containing a suitable service-lift connecting each flat, suite, or the like either directly with the private kitchen of such flat or with a passage, room, or servery near or adjacent thereto, the lifts being grouped together in blocks for convenience of service. One or more auxiliary serveries may be provided and arranged to adjoin or communicate with the central kitchen. A telephone, speaking-tube or like communicating-means is also arranged to connect each flat or the like with the kitchen.



or with a room, passage, or the like adjacent to same. The residents of each flat or the like are by the above arrangement able to send an order for a meal either directly to the central kitchen or to an operator or attendant in a room or servery near or adjacent thereto, and upon the order being completed it can be delivered direct by the particular lift to the flat or the like of the resident who has given the order. In a large block of buildings there may be two or more of such central kitchens, with or without connecting auxiliary serveries, conveniently located near the service-lifts, which would be grouped in blocks, appropriately lettered and numbered, and connected each with its particular private kitchen or with a private service-room. Each central kitchen or auxiliary servery is thus arranged to serve one or more blocks or lifts.

Cover the Floors

with

"MALTHOID"

This celebrated material is ideal for floor-covering—much more durable than linoleum and retains its handsome appearance all the time. For dining-room or hall, kitchen or bedroom, it is equally pleasing.

PRICES ARE FROM 1 3 to 2 9 YARD

You will highly appreciate its wear-resisting properties, and the fact that it always looks fresh, new and uniform.

"MALTHOID" is far superior to other compositions of similar type. The 2-ply "Malthoid" is heavier than other makes of 3-ply. No fish oil or animal fats enter into the manufacture of "Malthoid"—it is purely mineral.

Ask your dealer to show you "MALTHOID."

AUBREY GUALTER & Co.

DISTRIBUTORS

Featherston Street - Wellington

McCarthy's Family Hotel

Taupo Quay,

WANGANUI

C. J. MCCARTHY, PROPRIETOR

Steel Constructional Work for Architects, Contractors, Etc.

Joists, Beams, Stanchions, Compound Girders,
Solid Steel Columns, Steel Roof Trusses,
Galvanised Roofing Iron, Ridging, Spouting,
Downpipes, etc.

Full stocks. Quick deliveries.

A. & T. BURT, LTD.

Auckland, Wellington, Christchurch, Timaru,
Dunedin, Invercargill.

London Office: Eldon St. House, E.C.