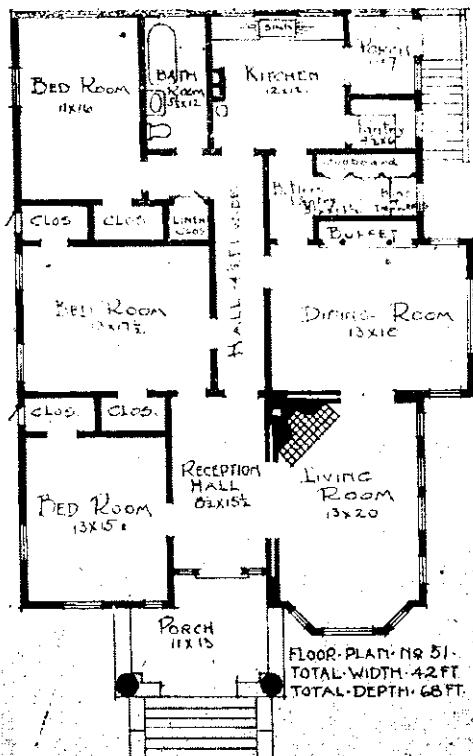




No. 4.—A Concrete Bungalow of Unusual Design.

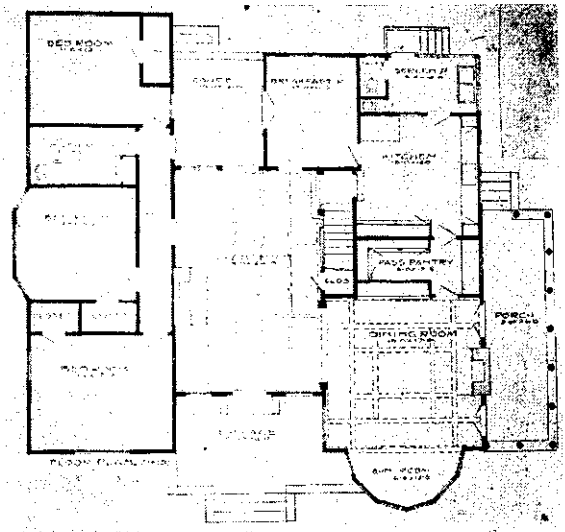
billiard room combined, and a maid's room. The living room and dining rooms are beamed and paneled, with mantels in each room and a wide buffet

and cement steps and porches. This house needs a wide lot and should have generous lawns and wide gravel or cement walks or drives.



Plan of No. 1, shown on page 567.

in the dining room. The other unique features of the plan are the sun room, or bay window, and the breakfast room and court. The exterior walls are of reinforced concrete with plaster ornamentation



Plan of No. 2, shown on page 568.

No. 3 This beautiful and unusual design should be surrounded by spacious and well-planned grounds in order to fully develop its artistic merit, and if to this might be added the advantage of an elevated location, the conditions would be perfect. The entrance is quite unique, being into an open pergola court at the end of which is the main entrance. Directly in front is the charming feature of the house a circular flower bed, and a many-paned window opens into a commodious hall. The dining room and living room occupy the front en-