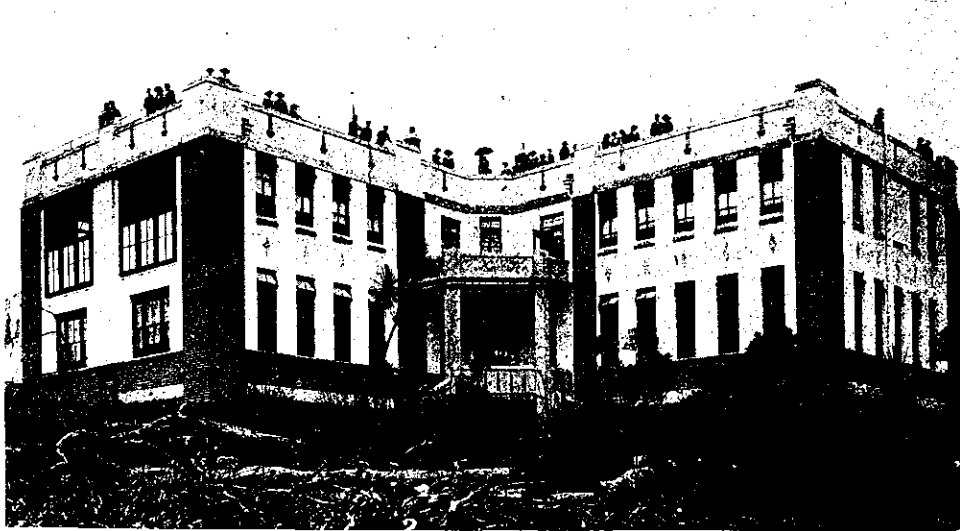
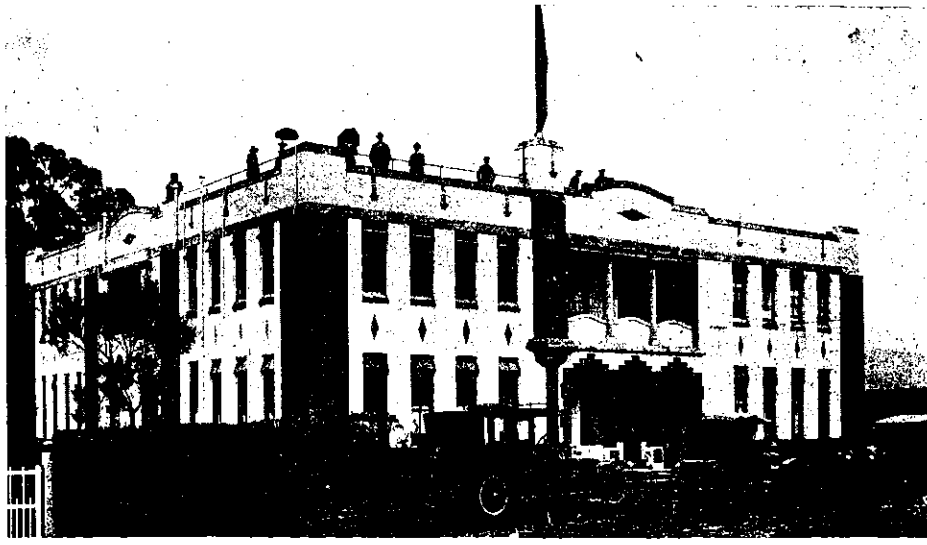


your concrete the mode of its use, must embody elements of beauty and not depend for its charm on superimposed material of quite another nature. This suggestion can only be applied in first cases, and it is not a principle of general application. It

above, richly coloured and gilded, would surely be a quite legitimate treatment. By a careful study of requirements and conditions, and by fidelity to all we think beautiful and true in human thought and feeling, we shall, I think, be able to evolve a



Northern Front of Balmacewan House, recently opened in Dunedin to provide additional accomodation for boys of the John McGlashan School.



Balmacewan House, recently opened in Dunedin.

should not be used as an argument against mural painting or mosaic. It would surely be quite possible to put up a concrete building of good proportions with the concrete walls exposed to view in naked frankness and wedded to certain features of stone or native marble. The main entrance of such a building having an heraldically carved surface

mode of concrete construction as unique and personal to the material as any stone constructed building that has ever been created, and for this purpose the less we conform to our ancient styles the better.

Genius is the art of taking infinite pains.--  
Carlyle.