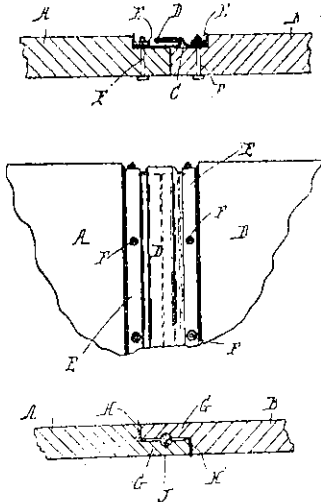


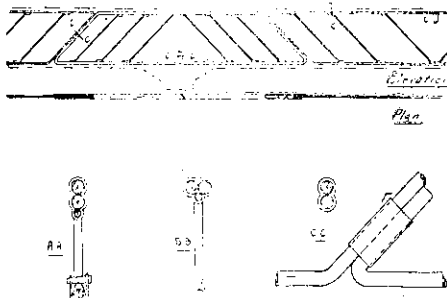
Patents of Interest to Builders.

CONCRETE PIPE OR FLUMING JOINT—A patent, No. 7 40687, has been taken out by Walter Thomas Onion, of Parawai, Thames. The invention consists in providing the joint with a covering of lead extending over the joint all round, which covering is formed by a strip of lead, the two edges of which are clamped firmly around the respective members



of the joint, and the central portion of which is made with a looseness such that the two joint-members may have free movement relatively to one another within the limits of the looseness provided. Consequently the watertight connection between the pipe or fluming ends is, it is stated, maintained even if the levels vary owing to the support or foundations of the pipe or fluming line settling in parts.

CONCRETE-REINFORCING METAL FRAME—A patent, No. 40040, has been taken out by Charles Stephen Mulliner, of Auckland. According to this invention, metal frames, for reinforcing concrete beams and floors, are constructed in such a manner that the principal rods of continuing frames shall be connected together, by metal bands, and the principal rods of one beam shall be connected to the principal rods of the next continuing beam at either end by lateral tie-rods and metal bands, with centres of gravity of all rods and bands in the same longitudinal and vertical planes, with



the object of enabling the stresses to be distributed equally over the frame, and also transmitted from any one frame to the next continuing frame, thus forming one continuous frame from end to end of building, with a complete trussed cantilever frame over each support, with frames for centre spans connected to same at ends. The horizontal rods are to be connected together, and the tie-rods are to be connected to the horizontal rods by metal bands encircling the rods and shaped and fixed under pressure, with the centres of gravity of all component rods and bands in the same horizontal and vertical planes.

TOLLEY & SON, LTD

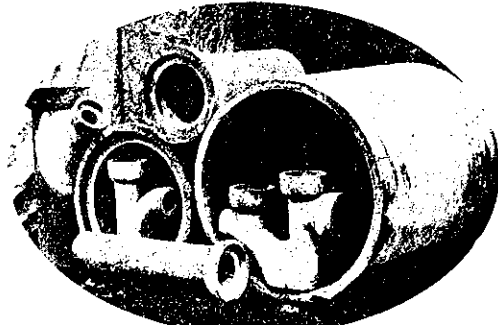
CHEWS LANE, WELLINGTON

Contractors for the Supply and Installation of
Electrical Equipment

Representing in New Zealand:
JOHNSON and PHILLIPS, Ltd., London
Cables' Switchgear Transformers.

WRIGHT and WOOD Ltd., Halifax
Dynamoes and Motors.

WAGNER ELECTRIC MANUFACTURING Co.,
St. Louis, U.S.A.
Wagner Single Phase A.C. Motors.



CEMENT PIPES

have proved the best for SEWAGE and ROAD CULVERTS. In sizes from 4 inches to 42 inches in diameter. STRONG and EVERLASTING. Improve with age. We make Concrete Posts and Strainers, Pig Troughs, Salt Pans, Garden Rollers, Flaps, etc., etc. Factories: Masterton, Hastings, and Waitara. Full particulars—

The Cement Pipe Co., Ltd., Masterton.

Brunner Fireclay Goods

Have gained the highest possible awards at all important exhibitions held in Australasia during the last 40 years, and are used in nearly all of the large works throughout New Zealand. To ensure satisfaction specify—

BRUNNER

The Tyneside Proprietary Ltd.
Owners Brunner Collieries & Works,
UNION CHAMBERS, WELLINGTON