

per cent. lime, 20 per cent. silica, and 8 per cent. alumina may be employed, or carbonate of lime in any form may be used. The mixture so constituted is then delivered to the feeding-devices 5, by means of which it is caused to pass through the pipes 4 into the furnace 1. The gases given off by the mixture when passing through the pipes 4 escape through the perforations 6 into the chamber 2, where they are consumed, thus augmenting the heat arising from the furnace 1 and so providing the temperature necessary for deoxidation of the iron-ore contained in such mixture, which is in consequence delivered by such pipes 4 to the furnace 1 in the requisite conditions for smelting.

Building Notes.

AUCKLAND.

The Minister of Education stated at Pukekohe that if the citizens would find the land he would do his best to get the Government to make the monetary grant necessary to build a Technical School.

The new Infant School was opened last month in the presence of the Minister of Education. The new structure has been erected at the head of Gillies Avenue on a commanding site of four acres, overlooking the present school, with a view of practically the whole of Newmarket and portion of the harbour. The building is said to be the most up to date of its kind in the Dominion, and to embody the latest improvements, recommended by educationists, in buildings for the teaching of children in the primary classes. Constructed of red pressed brick with plaster finishing, and roofed with Marseilles tiles, it comprises four commodious classrooms, a large porch, teachers' room, and cloak room, all finished in plaster. Casement windows make the building practically an open-air school. There is a blackboard dado round each room, and the latest type of individual desks and seats has been provided. The building, which has been erected by Mr. G. A. Jones to plans prepared by the Board's architect, Mr. J. Farrell, is capable of accommodating about 250 children. The cost was approximately £2,700.

Further accommodation is required at the Technical College, and the matter was brought under the notice of Mr. Hanon recently. The proposals involve the establishment of engineering rooms apart from the main structure, and the conversion of the present engineering quarters into four classrooms. It was stated that the adoption of the proposals would enable 120 additional pupils to be accommodated.

Plans are in hand for a large chocolate factory to be erected for an English firm.

CHRISTCHURCH.

The final plans for the new Canterbury Hall, to replace the building largely destroyed by fire, have been approved by the directors and shareholders of the Canterbury Hall Company and the City Council. The plans have been prepared by Mr. H. E. White, of Auckland and Wellington. The facade with its two towers will be left standing, but there will be a dome in the middle. Slight alterations only will be made to the towers. The doorway to the Alexandra Hall will be the same as the doorway to His Majesty's Theatre, each possessing a large portico. There will be a wide entrance to H.M. Theatre, giving a side-opening into the stalls, which will be entered by three doorways. H.M. Theatre will hold about 2,000 people. It will comprise in addition to the ground floor, two galleries, a dress circle, and an upper circle similar to His Majesty's Theatre, Wellington. Access to the dress circle will be by means of a flight of stairs, and then by a double landing on to a foyer. There will be six boxes on each side of the stage.

The new Alexandra Hall will possess a dancing floor of greater dimensions than the old hall, with a gallery above and two boxes on each side of its stage. It will hold over 1,000 people, and will be used for concerts and other performances. The stage will be fitted up in the same way as H.M. Theatre, scenery, etc., being provided.

The Nurse Maude District Nursing Association called for tenders through the architects, Messrs. England Bros., for premises in Madras Street. The same firm called for tenders

TOLLEY & SON, LTD.

CHEWS LANE .: WELLINGTON

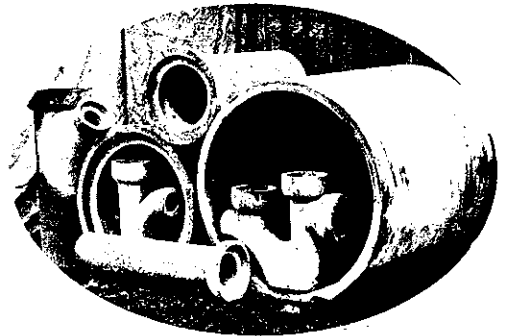
Contractors for the Supply and Installation of
Electrical Equipment

:: Representing in New Zealand ::

JOHNSON and PHILIPS Ltd., London
Cables' Switchgear Transformers.

WRIGHT & WOOD Ltd., Halifax
Dynamos and Motors.

WAGNER ELECTRIC MANUFACTURING Co.,
St. Louis, U.S.A.
Wagner Single Phase A.C. Motors.



CEMENT PIPES

have proved the best for SEWAGE and ROAD CULVERTS. In sizes from 4 inches to 42 inches in diameter. STRONG and EVERLASTING. Improve with age. We make Concrete Posts and Strainers, Pig Troughs, Salt Pans, Garden Rollers, Flaps, etc., etc. Factories: Masterton, Hastings, and Waitara. Full particulars—

The Cement Pipe Co., Ltd., Masterton.

FIREBRICKS

are necessary wherever heat
is used.

BRUNNER FIRECLAY GOODS

have stood all manner of tests during the
past 40 years.

The Tyneside Proprietary Ltd.

Owners Brunner Collieries & Works.

UNION CHAMBERS - WELLINGTON