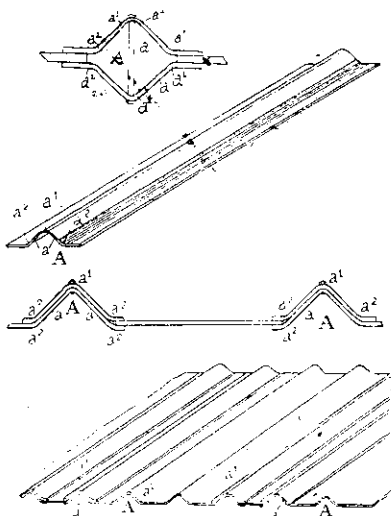


Patents of Interest to Builders.

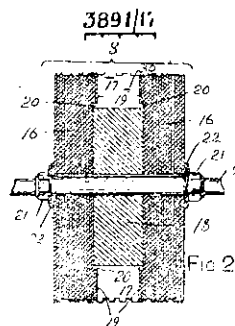
Tiles and Sheets, Corrugated.—A patent, No. 39658, has been taken out by Turner Bros., Asbestos Ltd., of Rochdale, England. The invention consists in the particular form of the corrugations to enable or permit of the overlapping edges at the corrugations to meet properly and fit closely, bedded one upon the other with a perfectly weather-proof joint



whilst maintaining the thickness of the material constant. This form comprises a large corrugation with straight sides at an angle of preferably about 45° to the horizontal and 90° to one another, and the apex and base curved or rounded off to permit one to bed or lie flat upon another (or any modification thereof between 30° to 60° to the horizontal and 60° to 120° to one another), and with each corrugation

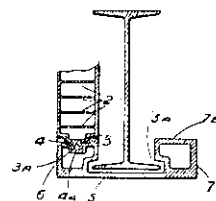
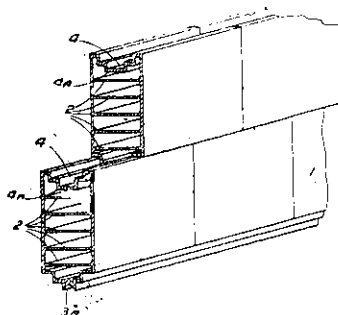
tapering and decreasing in height from the lower edge to the upper edge of the tile or sheet to an extent equal to the difference between the length of the diagonal and of the side of a square corresponding to the thickness of the material when the sides of the corrugations are at right angles to one another and to a corresponding extent when the sides are at a greater or less angle to one another.

Graining Timber.—A patent, No. 3891 has been taken out by A. J. Bull, of N.S. Wales. To facilitate the indenting of the surface of wood with permanent figured markings in imitation of the natural grain of a desired timber, a number of disks with interrupted cutting edges are clamped side by side on a spindle to form a pressure roller having the required peripheral pattern which may represent the graining of parquetry, parallel strips, or a single plank. A roller, built up entirely of metal disks 16 having interrupted cutting



edges, will imitate the longitudinal graining of a single piece of timber. To give the effect of parallel strips a central core 18 is completely surrounded by laterally arranged radial blades 17 which are retained in place by the rings 19. The roller may be mounted above an abutment roller in a machine frame, or it may be mounted in a frame adapted for manual use. In modifications the cutting edges may be formed integral with a solid roller, or the disks 16 may be replaced by rings fitting on to the core 18 which then extends the full length of the roller.

Building-Block-Interlocking.—A patent, No. 39771, has been taken out by Constance M. Houston, of Knowles Street, Papanui, Christchurch. It consists of a hollow interlocking-block having integral cross-supports, and having



on one edge of the block a tongue, and on the other edge a groove of approximately corresponding design, the groove being substantially larger than the tongue to provide extra room for cement.

NOW PUBLISHED!

The Lighting of Picture Galleries and Museums

By S. HURST SEAGER,
F. R. I. B. A.

Price:
ONE SHILLING & SIXPENCE

Send Postal Notes direct to the Publishers:

HARRY H. TOMBS, Ltd.,
8 Farish Street - WELLINGTON