

wide and lined with marble. It opens out into a hall with the elevators on the left and main stairs on the right, which lead to the upper floors.

Two of the three elevators are placed in this, the third being near the entrance at Hill Lane, where there is another stairway. The lifts will be worked automatically at night, but will be in charge of an attendant during the day.

The facade is faced with marble from the Kairuru quarries, Nelson district, the same stone that is being used in the upper stories of the new Parliament buildings, the principal feature being a lofty entrance portico with columns 35 feet apart to the height of the first two floors. The possibility of fire has been carefully provided against, the building being of steel frame construction with concrete floors throughout, so that should a fire start in any one floor, there is a very remote chance of its spreading any further. Steel frame windows and other fire proof devices are provided. The roof is flat and asphalted. The contractors for the building are Messrs. Grevatt and Sons, while the steel was supplied by Messrs. Wingate and Co. The electric lighting contract was let to Messrs. Tolly and Son, of Wellington, and the roofing and damp-proofing to Messrs. Mainland and Barr, of Wellington, while Messrs. Hansford and Mills supplied the marble work. Three lifts have been installed by the Electric Construction Co. of N.Z., two dual control, and one automatic control, each having a carrying capacity of 15 cwt., and travelling at a speed of 144 and 288 feet per minute, and serving ten floors.

New Premises for Messrs. Whitcombe and Tombs, Ltd., Auckland

Chilwell and Trevithick, A.R.I.B.A., Architects

The illustration shows a view of Messrs. Whitcombe and Tombs Ltd's. new premises, from Queen Street and Durham Street corner. It is a five storey building in reinforced concrete, flanking the south side of Durham Street from Queen Street to High Street, a distance of 187 feet 4 inches, with a 33 feet frontage to Queen Street. The rise from Queen Street to High Street, following the line of Durham Street, is about 20 feet, which entailed a considerable amount of excavation for the shop, which runs through on Queen Street level to High Street wall, practically giving free access to the public from one end to the other, as shown in our illustration. It is well lighted for its whole length, that portion nearest High Street receiving top light from a side arcade for a distance of 60 feet.

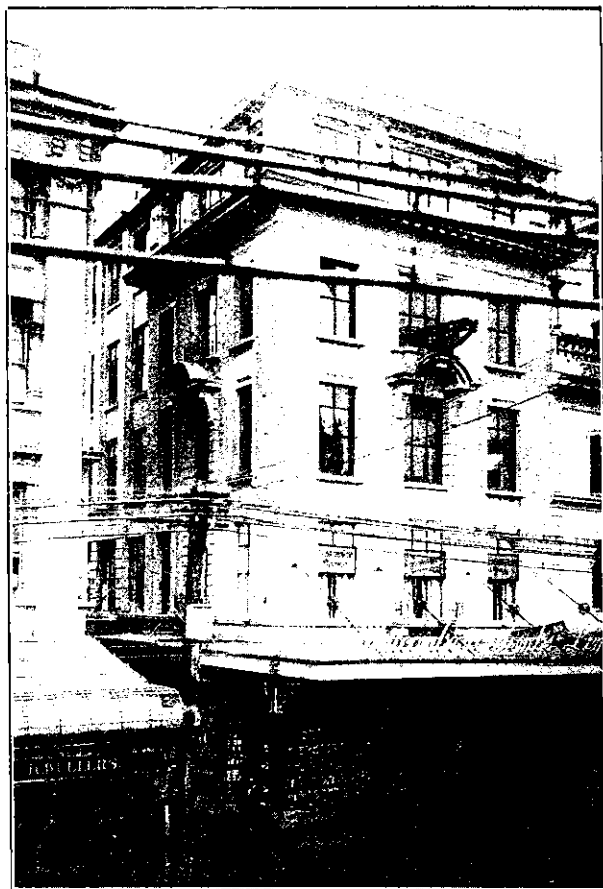
A staircase in addition to the goods and passenger lifts leads up from shop to offices and packing room on first floor, the remainder of the first floor being allotted to tearoom, with a separate public and kitchen entrance from Durham Street to same.

The factory entrance is from High Street, also cart dock and service to and from goods' lift, with parcel delivery from packing room, also strong room and lavatory mezzanine floors between cart dock and second floor.

The second and third floors are devoted to factory needs, such as folding, binding, litho., and machine work, with space for reserve stocks.

The fourth floor is designed with subsidiary beams and floor slabs reinforced in both directions to take heaviest floor load, for paper and bulk store with Queen Street end, top lighted for linotype and composing room, and High Street end devoted to dining rooms for the firm's operatives.

The factory is served with two enclosed staircases well lighted, and two lifts, one of each being continued to roof of building, which is flat, and designed to carry full working load equal to second or third floor.



Messrs. Whitcombe and Tombs, Ltd., New Premises.
Queen Street, Auckland.

Messrs. Fletcher Bros., Ltd., were the contractors, and associated with them are the following sub-contractors:—A. and T. Burt, Ltd. (plumbing and electric lighting); L. Bater (plastering); Briscoe and Co., Ltd. (steel windows); Phillips and Impey, Ltd. (glazing); M. J. Bennett and Co., Ltd. (painting); Wilson and Kelly, Ltd. (ironwork); Carrara Ceiling Co., Ltd. (fibrous plaster); Neuchatel Asphalt Co., Ltd. (asphalt work); J. Bouskill (marble work); Fama Flooring Co. (floor covering); Redpath and Sons, Ltd. ("Rubline" floor covering); E. Bourne (tiling); C. and W. Hayward, Ltd. (fittings); Lamson Despatch Co., Ltd. (pneumatic cash tubes). The Electrical Construc-