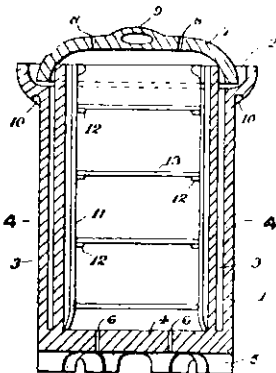
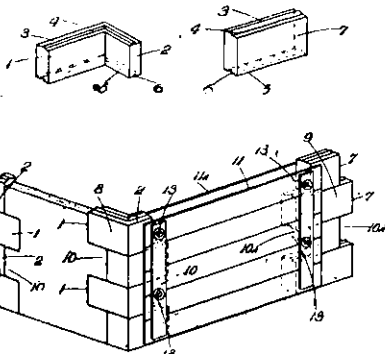


has a scalloped flange, and the bottom and lid are perforated for passage of air. A frame or cylinder in the interior of the



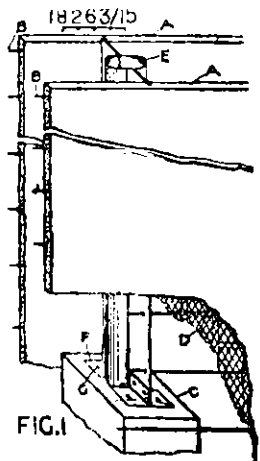
vessel has shelves for holding articles or produce which it is desired to keep in a fresh state.

Concrete Wall Construction.—A patent, No. 38,208, has been taken out by John O'Driscoll, builder, of Lauder, Otago. It comprises collapsible boxing adapted to engage with and cover the ends of staggered blocks first erected as columns in



the wall and at the corners thereof. While the said boxing does not extend to the inner corners of the wall, it may be filled with and retain concrete for a sufficient distance and depth to complete that section of the wall between the columns engaged by the boxing.

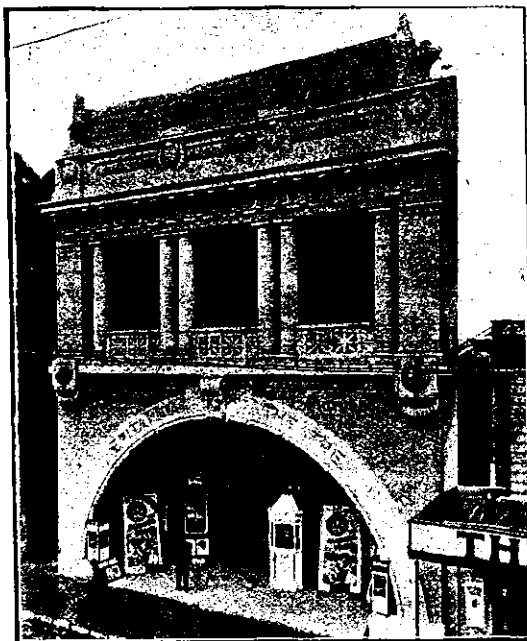
Reinforced Concrete Wall.—A Patent No. 18,263 has been taken out by A. J. McKee of New South Wales. This invention is to facilitate the construction of walls sheet metal standards are erected on concrete or bricks piers, and



are connected by longitudinal rods covered with corrugated wire netting.

Angle pieces F are riveted to the standards E and have perforated flanges to receive the longitudinal rods B.

W. A. CHOTE Ltd., FARISH ST. PHONE 763.



Britannia Theatre, Manners St., Wellington, built with Golden Bay Cement

Also Agents for:—MILBURN LIME, J. J. CRAIG'S HYDRAULIC LIME, BRUNNER FIRE BRICKS, FIRE TILES, & FIRE CLAY, CHIMNEY POTS, DRAIN PIPES.

PATENTS

Obtained in all Countries!

Genius is a Quicker Road to Wealth than Hard Work
Ideas in the shape of inventions are coinable into £ s. d.
The progress of the world is due to its inventors
Heads earn more than Hands

Baldwin & Rayward

Engineers and Patent Experts

OFFICES:

DUNEDIN.....Joel's Building, Crawford Street
CHRISTCHURCH.....Corner of High and Cashel Sts.
INVERCARGILL.....Esk Street
AUCKLAND.....8 Smeaton's Buildings
NEW PLYMOUTH.....Walter Bewley, Representative
WANGANUI.....J. L. Stevenson, Representative
NAPIER.....Cranby & Co., Representatives
HASTINGS.....J. A. Fraser, Representative
NELSON.....G. Langley Bell, Representative
BLENHEIM.....W. T. Churchward, Representative
PALMERSTON NORTH, Ravenhill & Co., Representatives

Head Office:

215 Lambton Quay, Wellington