

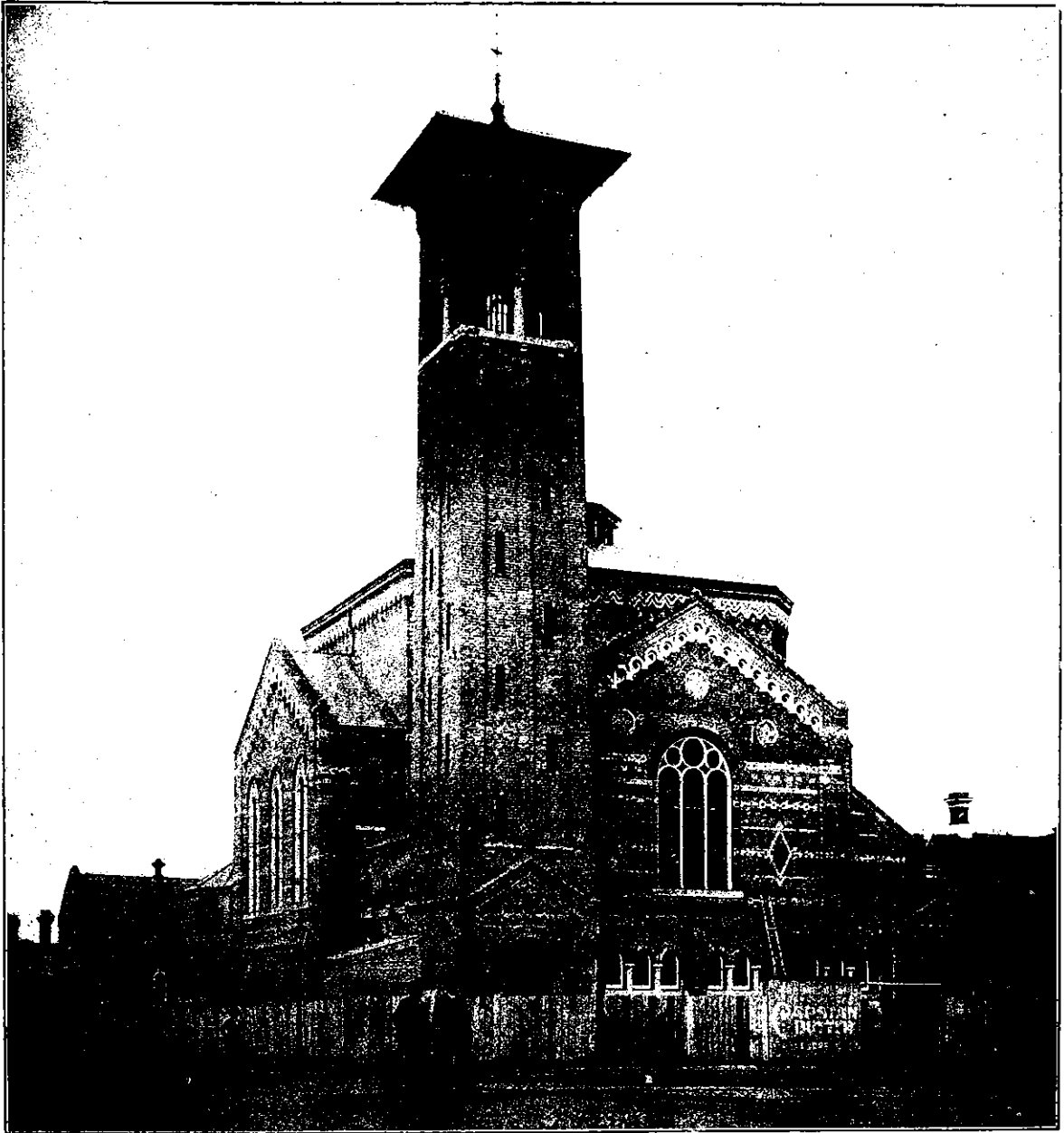
**ROMAN BRICKWORK**

The Roman brickmaking and brickbuilding in England was similar to that done all over the Roman Empire. The most important British-Roman brickwork is to be found at Dover in the Pharos Tower, and at St. Mary-in-the-Castle. In the walls of the

sistently intelligent use of Roman bricks adapted to essentially Saxon forms.

**NORMAN BRICKWORK**

Norman builders, having acquired a developed masonry among the fine French building stones, did



Some interesting Brick Work has been introduced by the Architect in this Church, recently erected in Invercargill.

former are the usual bonding courses of flat bricks, some of which have ledges for keying purposes.

**SAXON BRICKWORK**

The Saxons discontinued brickmaking, but used ready made materials, using sometimes the bricks the Romans made.

The church of Holy Trinity, Colchester, possesses a fine late Saxon tower, showing throughout a con-

not largely adopt brickwork, but, if they were given Roman bricks, as at Colchester, could put them together with far more skill and interest than their Saxon predecessor.

**EARLY ENGLISH BRICKWORK**

Evidence will not justify the assertion that no bricks were burnt in England from the time of the Roman evacuation in the year 420 A.D. until 1260