

and is expected to be ready for occupation by Messrs E. Turner and Sons in about two months. The remaining seven blocks will take from six to seven months to complete, or longer if the weather conditions should be unfavourable. All the foundations for this larger building are in.

The contractors are having no difficulty in regard to labour, and have from 80 to 100 men employed on the various works. They have, however, been handicapped in regard to supplies of material. At the outset there was a delay in the delivery of the requisite steel, but that is now to hand. The chief difficulty has been in obtaining shingle, supplies of which were slow in coming to hand, owing to the weather and want of boatmen.

Messrs Cumming and Goldsboro', joint architects for the Choral Hall University, called for tenders for the brickwork up to the 20th August.

CHRISTCHURCH

A building for the production of salt is contemplated at New Brighton estimated to cost from £10,000 to £15,000. Mr. Leslie A. McArthur has applied to the City Council for the lease of 400 acres for the purpose, and the council has decided to grant a lease if satisfactory arrangements could be made. The applicant describes the works as a "Marine Electrical Solar Salt Works."

The Beautifying Association has decided to be represented at a Town Planning Conference to be held in Wellington shortly.

At a conference of the Beautifying Society with the Tramway's Board the question of carrying out the society's scheme for beautifying the Square again cropped up but Mr. Horst Seager, F.R.I.B.A., said the time was not ripe for carrying out the Association's scheme; when the war was over and a peace memorial was proposed, the beautifying of the Square would be a very good object upon which to spend money. All that the Association wanted to see was that nothing was done to interfere with the carrying out, in the future, of the extremely beautiful scheme adopted by the Association. He contended that from the Board's point of view the scheme would be a money-saving one, as it would reduce the present delays occasioned by people wishing to board trams having to wait till passengers alighted.

Plans are in course of preparation for the erection of a new car shed, to take the place of the present very much dilapidated structure at the back of the new Government buildings in Cathedral square. The condition of the old building was such that its replacement by a new building became absolutely imperative, otherwise the work would have been held over until prices of materials had become normal once more.

Additional accommodation has been provided to the hospital by the addition of new wards known as the Chalmers' wards. The building is named after Miss Jenn Chalmers, of Ashburton, who gave the Hospital Board the sum of £8,000 towards the cost of a building for chronic or incurable cases as a memorial to Messrs John and Peter Chalmers, of Ashburton, natives of Perth, Scotland. This sum, together with the Government subsidy of 2s. in the £, has defrayed the entire cost of the building. Miss Chalmers herself laid the foundation stone on February 23rd, 1916.

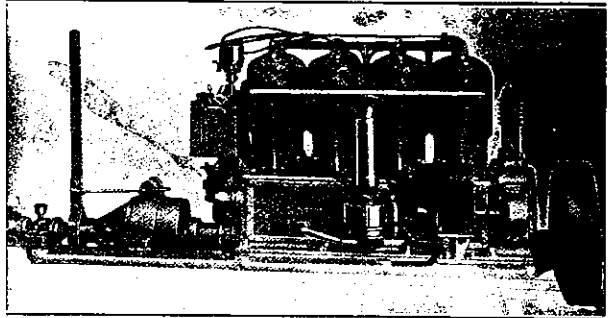
The Chalmers building is of the most modern type. Characterized by an extreme simplicity in design, it is obviously built to obtain the maximum amount of light and air, and to ensure the comfort and convenience of both patients and nurses. It is three storeyed, and contains three main wards besides a number of smaller rooms. Each of the main wards is 73 feet long by 24 feet wide, and allows ample space for 18 beds. In addition there are two smaller wards on each floor, one to hold one bed and the other two beds. All the wards are lofty and well lighted rooms, with big windows and white plastered walls. The walls are everywhere plastered except in the sanitary block, where they are tiled to a height of six feet from the ground. The floors are of polished wood, and all the ward fittings are of oiled rimu. Electricity is employed in lighting throughout the building. A comfortable sitting-room is provided on each floor, as well as duty rooms, sister's rooms, and pantries. Store-rooms of a useful size and design are also provided on the first and second floors.

Commodious verandahs and balconies are a feature of the Chalmers building. These run completely round the west and north and most of the east sides of the wards. They

Loew Victor Motors

1 to 6 Cylinders
6 to 137 Horse Power

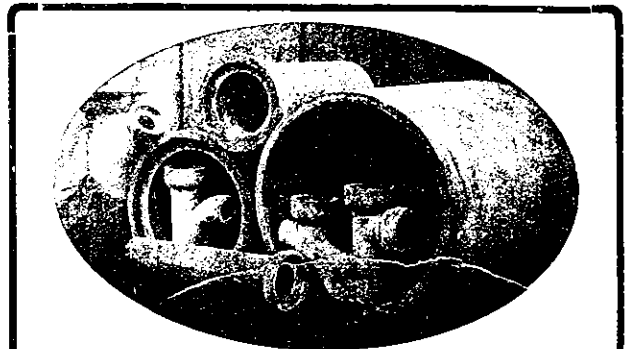
Three Types: HEAVY DUTY, MEDIUM DUTY, and SPEED.



Write for Catalogue and Prices:

CHAS. BAILEY, Junr., Beaumont Street, Freeman's Bay, **Auckland**

Ship, Yacht, Launch & Boat Builder Sole Agent for New Zealand



CEMENT PIPES

have proved the best for SEWAGE and ROAD CULVERTS. In sizes from 4 inches to 42 inches in diameter. STRONG and EVERLASTING. Improve with age. We make Concrete Posts and Strainers, Pig Troughs, Salt Pans, Garden Rollers, Flaps, etc., etc. Factories: Masterton, Hastings, and Wairara. Full particulars.

The Cement Pipe Co., Ltd., Masterton.

FIRECLAY GOODS

are necessary wherever heat is used.

To ensure satisfaction specify

BRUNNER

The Tyneside Proprietary Ltd.

Owners Brunner Collieries & Works,

TRADE **BRUNNER** MARK

Head Office: Union Chambers, WELLINGTON

Mention of "Progress" when writing ensures prompt attention