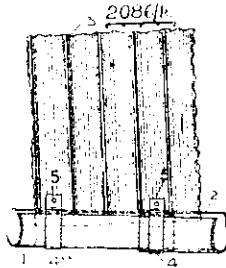


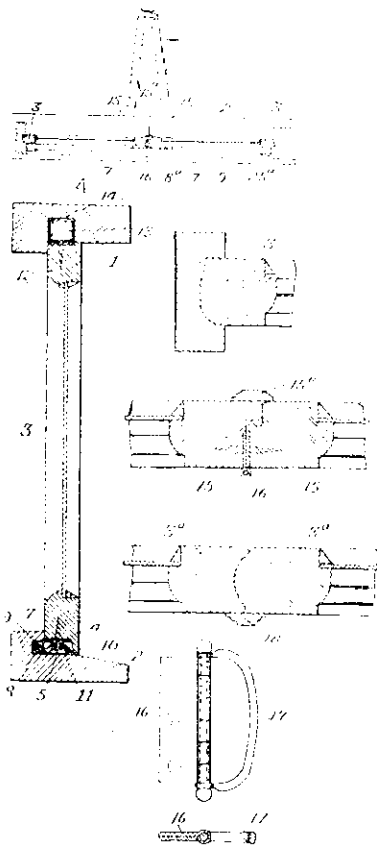
Patents of Interest to Builders

Roofing Gutter. A patent, No. 2,086, has been taken out by A. G. Michell of Victoria for a gutter consisting of slotted telescopic tubes which are secured to the roof by means of metal straps and bolts.



The slot 2 may be undulating on one or both edges and may be supported by extensions of the rafters. To connect with a down pipe a telescopic sleeve is provided with a conical head at right-angles to the axis of the tube. A cap may be fitted on the top end to exclude vermin, &c., and the device may be used as a capping or base for corrugated or piling fences.

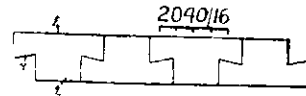
Casement-Window, Fanlight, &c., Fittings.—A patent, No. 38,602, has been taken out by C. A. Lee, builder of Mt. Eden, Auckland. According to this invention, one of the stiles of a window sash is slidably mounted between the head 1 and sill 2 of the frame by recessing in the under surface



of the lower bar of the sash, below the sliding-style 3, a plate 4, with a pivot pin 5 projecting downwards therefrom, retaining-guide 6 and a portion 10 to slide on the track 11, said guide and track 9 and 11 extending the full length of the sill and being recessed therein. A plate 12 is recessed in the upper surface of the top bar of the sash directly over

the sliding-style 3, and carries a wheel 13 working in a recess 14 extending the full length of the head 1. The plates 4 and 12 are each formed with a semicircular end, and have which pin 5 engages in one of the holes in a shoe 7, the latter being formed with a portion 8 to engage in the the pin 5 and wheel 13 respectively carried thereby mounted eccentrically to the curved ends, so as to cause the sash to fit tightly against the stops when closed and to slide freely when open. The shoes 7 are made with two holes therein to enable them to be used either right-handed or left-handed. In fitting a two-sash window both the outer stiles 3 are slidably mounted and are each shaped to make a joint with the frame-stile. The meeting-stiles 15 are hinged together by loose pin butt-hinges 16 screwed to their edges, and are shaped to make, when closed, a joint. The bottom hinge 16 connecting the stiles 15 is provided with a handle 17 by means of which the window is opened and closed. The dotted lines indicate the position of the sashes in relation to each other when open, the stiles 3 being kept the required distance apart by means of the sliding distance-bar 8a, which slides in the guide 9 between the shoes 7. Both sashes when opened may be slid towards either side of the frame. A weather-strip 15a secured to the outside of one of the stiles 15 covers the joint between the latter.

Building Block.—A patent, No. 2,040, has been taken out by R. E. Larson of Sweden for an interlocking solid or hollow block of T-section in which the interlocking portions



consist of various forms of dovetail or concavo-convex joints. The overlapping members 7 may be at right-angles to the block 2 and may be tongued and grooved. The block may have further extending portions 7 forming three steps.

W. A. CHOTE Ltd., FARISH ST. PHONE 763.



Bank of N.Z., Manners St., Wellington. Built with Golden Bay Cement.

Also Agents for: MILBURN LIME, J. J. CRAIG'S HYDRAULIC LIME, BRUNNER FIRE BRICKS, FIRE TILES, & FIRE CLAY, CHIMNEY POTTS, DRAIN PIPES.