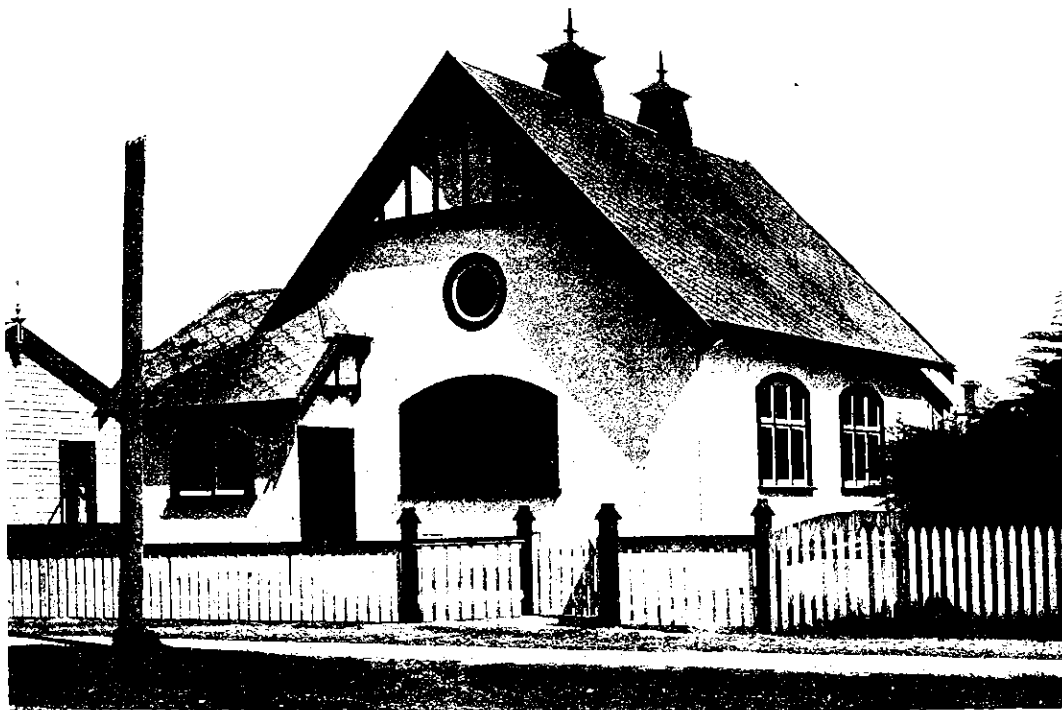


# £5 IS ALL

the difference between the cost of a six-roomed house built of ordinary looking inflammable weather-board, and a similar house constructed of "POILITE" Building Sheets finished with rough-cast, having the following advantages:

<b>Handsome appearance,</b>	<b>Fireproofness,</b>
<b>Insurance 25 per cent. less,</b>	<b>Durability,</b>
<b>Saving in Paint,</b>	<b>Draught-proof,</b>
<b>Equalized temperature, etc., etc.</b>	



Baptist Church, Gore, built of "POILITE" with Rough-cast finish.

The figure named above is based on the actual experience of a well known Dunedin Builder and can be substantiated.

For N.Z. Prices and further particulars  
APPLY TO:

## JOHN CHAMBERS & SON LTD.,

Fort St. (Head Office)	-	-	Auckland
Jervois Quay	-	-	Wellington
Lowe St.	-	-	Gisborne
20012, St. Asaph St.	-	-	Christchurch
Stuart & Cumberland Sts.	-	-	Dunedin

**Sole Agents for New Zealand.**