

# Architecture and Building

[Note—The Articles appearing on pages 951 to 958 are published by arrangement with the New Zealand Institute of Architects.]

## Brickwork—from the Aesthetic point of view, and the lines of its possible development in N.Z.

By C. H. MITCHELL, A.R.I.B.A., WELLINGTON.

### Part II *Continued.*

Another means of obtaining effect in the bonding of bricks may be mentioned, namely the introduction of straight vertical joints (Figs. 19 and 20),



Fig. 19.

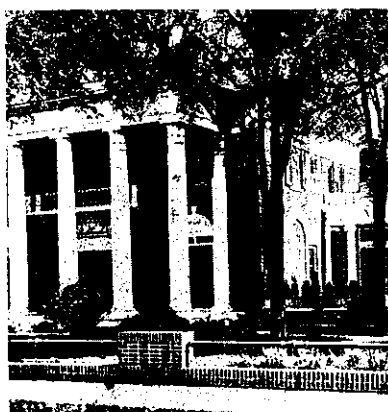


Fig. 20.

and judging from what I have seen of work of this nature much could be developed from this idea. From a constructional standpoint, this introduction

of straight joints is not good, but I understand that it is only a face joint and that the bricks behind the first four and a half inches are properly bonded.

Other relieving features to a flat wall are the working in of diaper patterns of various designs with dark or light headers as will be seen by the parapet of a New York apartment house in Fig. 21.

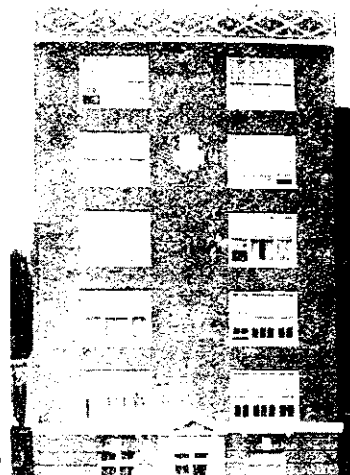


Fig. 21.



Fig. 22.

Panels built up of stretchers, headers, bricks on edge, bricks laid diagonally, specially shaped bricks or even marble inlays add special interest wherever placed as will be seen by reference to Figs. 7, 12, 18, 19, 22, 23. In Fig. 19 it will be noticed that the panels are formed by projecting headers.

When using Flemish bond for a garden wall, an interesting effect can be obtained by building in rough rubble with the brickwork.