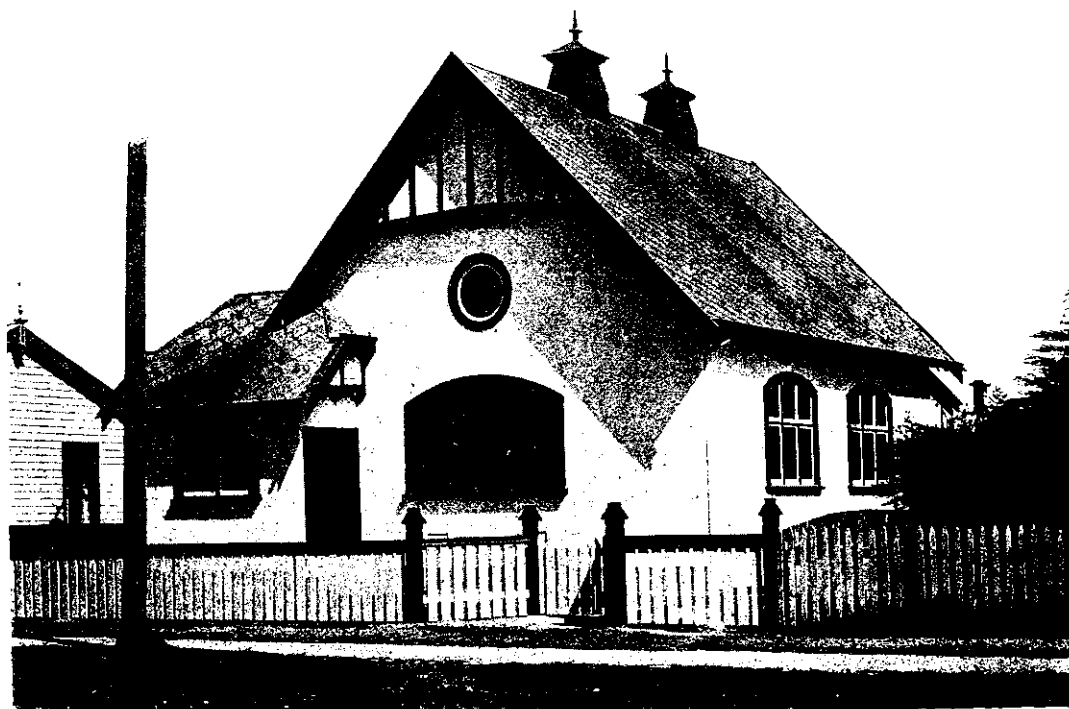


£5 IS ALL

the difference between the cost of a six-roomed house built of ordinary looking inflammable weather-board, and a similar house constructed of "POILITE" Building Sheets finished with rough-cast, having the following advantages:

Handsome appearance,	Fireproofness,
Insurance 25 per cent. less,	Durability,
Saving in Paint,	Draught-proof,
Equalized temperature, etc., etc.	



Baptist Church Gore, built of "POILITE" with Rough-cast finish.

The figure named above is based on the actual experience of a well known Dunedin Builder and can be substantiated.

For N.Z. Prices and further particulars

APPLY TO:

JOHN CHAMBERS & SON LTD.,

Fort St. (Head Office)	-	-	Auckland
Jervois Quay	-	-	Wellington
Lowe St.	-	-	Gisborne
20012, St. Asaph St.	-	-	Christchurch
Stea. L. & Cumberland Sts.	-	-	Dunedin

Sole Agents for New Zealand.