

controlling the valve-spindle so as to cause such valve to close after a predetermined number of revolutions of such fan, wheel, or screw. The invention may be carried out in a number of ways in which fans, or water-wheels or screws, of different designs may be employed to actuate the mechanism controlling the valve-spindle.

Artificial Stone.—Patent No. 274, by P. Ford and Sons, England. In the manufacture of reflectors, tiles, building blocks, and the like,

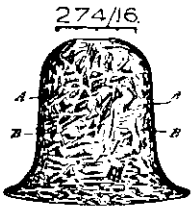


Fig. 6

pieces of alabaster or gypsum of irregular or uniform size are mixed with cement and moulded or rolled to the desired shape. The articles and blocks so formed are then cut and polished.

Ordinary cement is used, and in some instances may be replaced by plastic vulcanite or by semi-transparent or coloured cement.

As applied to electric light reflectors the moulded shade is turned and polished and becomes semi-transparent, the light being diffused through the alabaster chips A.

Road Making.—A patent, No. 606, has been taken out by L. Litton, of New South Wales, to increase the wearing qualities and facilitate the rolling of a road, by substituting unbroken pebbles for the usual angular pieces of broken metal.

Notice to Subscribers

"N.Z. Building Progress" is posted each month through the G.P.O. at Wellington. If any subscriber should not get his copy, another will be sent him if we are notified in good time. The paper is supplied from year to year only, and if subscribers continue to receive the paper after expiry of the current year, we shall accept it as an intimation of their desire to continue for another twelve months. We undertake to supply the paper for such further term. Notice of discontinuance must be sent to the Manager, 8 Farish Street, Wellington in writing, as no Agent has authority to receive notice of discontinuance on our behalf. The subscription is 7/6 per annum. A discount of 1/- will be allowed off this amount if subscription is paid in advance.

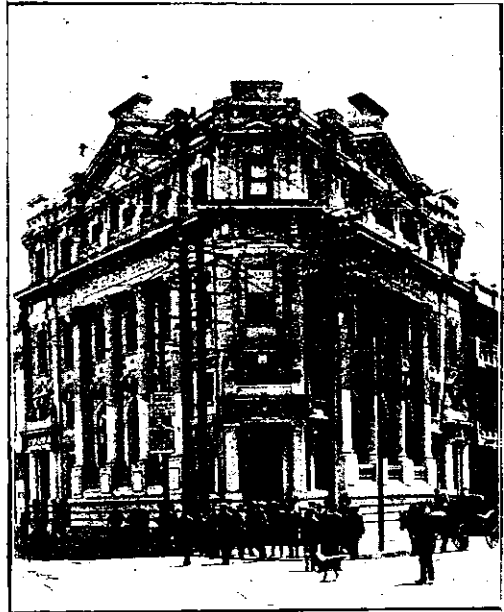
Building Notes

AUCKLAND.

The proposed new building for the Y.W.C.A. has now progressed another stage, the tender of Mr. G. Garner for £15,532 having been accepted last month out of 13 sent in.

The designs, as reported in our October issue, come from the offices of that very live firm Messrs. Hoggard & Prouse and W. H. Gammer, A.R.I.B.A. and the building is to be erected next to Myers Park, overlooking the city. The ground slopes sharply at the back, so that there will be a three-storey frontage to Queen Street, and five storeys at the rear. The structure will be of steel and ferro-concrete, while the front elevation will be most striking in appearance. A sweeping flight of stone steps leads up to the portico at the main entrance in the middle of the building, this being supported by two imposing Ionic pillars, and extending as high as the second storey. A wide terrace, with a pergola roof, runs the entire length of the Queen Street frontage on the second storey, while a flat roof will permit of a full size tennis court on the top of the building. A strikingly-designed lounge lobby opens out from the main entrance, several large open fireplaces giving a very comfortable and cosy appearance. A lecture hall, with a seating capacity for 250, is to be built on the main floor, with a separate entrance on the lower ground floor level. A roomy gymnasium, 64ft. by 36ft., and a games room occupy space on the basement level, and special attention has been paid to the requirements of the junior department of the association. Class-rooms, rest-rooms, locker-rooms, and

W. A. CHOTE, FARISH ST. PHONE 763.



BANK OF N.Z., MANNERS ST., WELLINGTON.
Built with Golden Bay Cement.

Also Agents for:—MILBURN LIME, J. J. CRAIG'S HYDRAULIC LIME,
BRUNNER FIRE BRICKS, FIRE TILES, & FIRE CLAY, CHIMNEY POTS,
DRAIN PIPES.

PATENTS

Obtained in all Countries!

Genius is a Quicker Road to Wealth than Hard Work
Ideas in the shape of inventions are coinable into £ s. d.
The progress of the world is due to its inventors
Heads earn more than Hands

Baldwin & Rayward

Engineers and Patent Experts

OFFICES:

DUNEDIN..... Joel's Building, Crawford Street
CHRISTCHURCH..... Corner of High and Cashel Sts.
INVERCARGILL..... Esk Street
AUCKLAND..... 8 Smeaton's Buildings
NEW PLYMOUTH..... Walter Bewley, Representative
WANGANUI..... J. L. Stevenson, Representative
NAPIER..... Cranby & Co., Representatives
HASTINGS..... J. A. Fraser, Representative
NELSON..... G. Langley Bell, Representative
BLENHEIM..... W. T. Churchward, Representative
PALMERSTON NORTH, Ravenhill & Co., Representatives

Head Office:

215 Lambton Quay, Wellington