

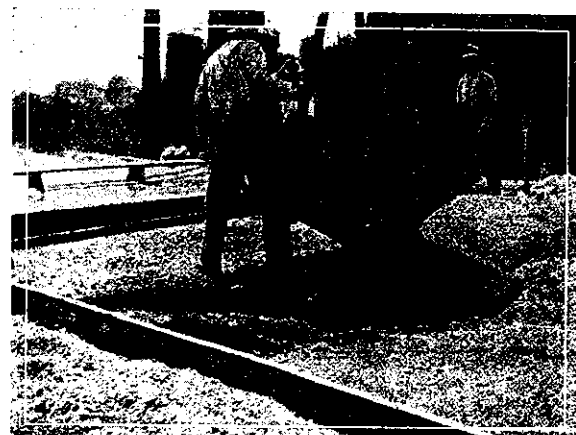
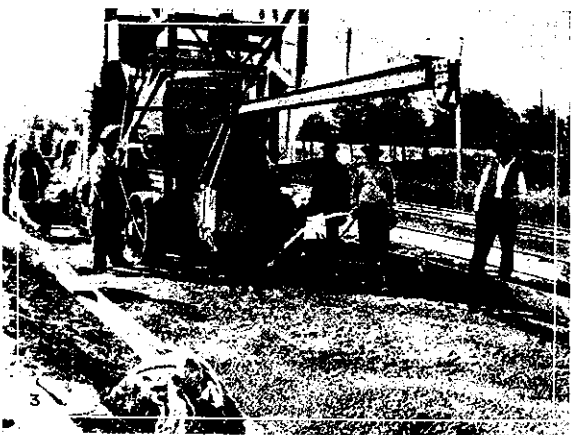
# Concrete for Highways

The Importance of Concrete for permanent roads and paths is every day being demonstrated. The Association of American Portland Cement Manufacturers has recently published some valuable information on this subject from which we take the following.

The purpose of a road is to provide the shortest and easiest possible means of passage between different points.

The earliest roads of history were the great highways for war and commerce extending into dis-

and broken stones in the proportion of about one to three. On top of this was placed another layer of concrete, which was not tamped and which was a mixture of old building materials and hot lime. The wearing course consisted of irregularly shaped



Making Concrete Roads in America 1—Preparation of Sub-base. 2—Distribution of Construction Materials. 3—Wetting Sub-base Immediately before placing Concrete. 4—Depositing the mushy wet Concrete

tricts not readily accessible by water. Most of these, however, were merely footpaths, until the Carthaginians began and the Romans developed the science of road building. The best of these Roman roads were three feet thick, laid in four courses. A foundation of large flat stones laid in lime mortar was covered with a well compacted concrete of lime

flat stones, about six inches thick, carefully fitted and laid in lime mortar. This form of construction was undoubtedly not the first method used, but was the result of much experience. Even these early road builders appreciated the value of placing in the road a material providing a positive mechanical bonding strength between the stones.