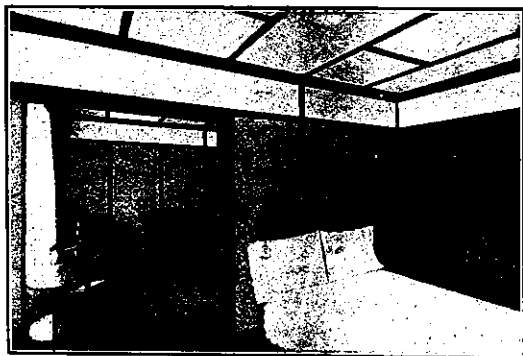
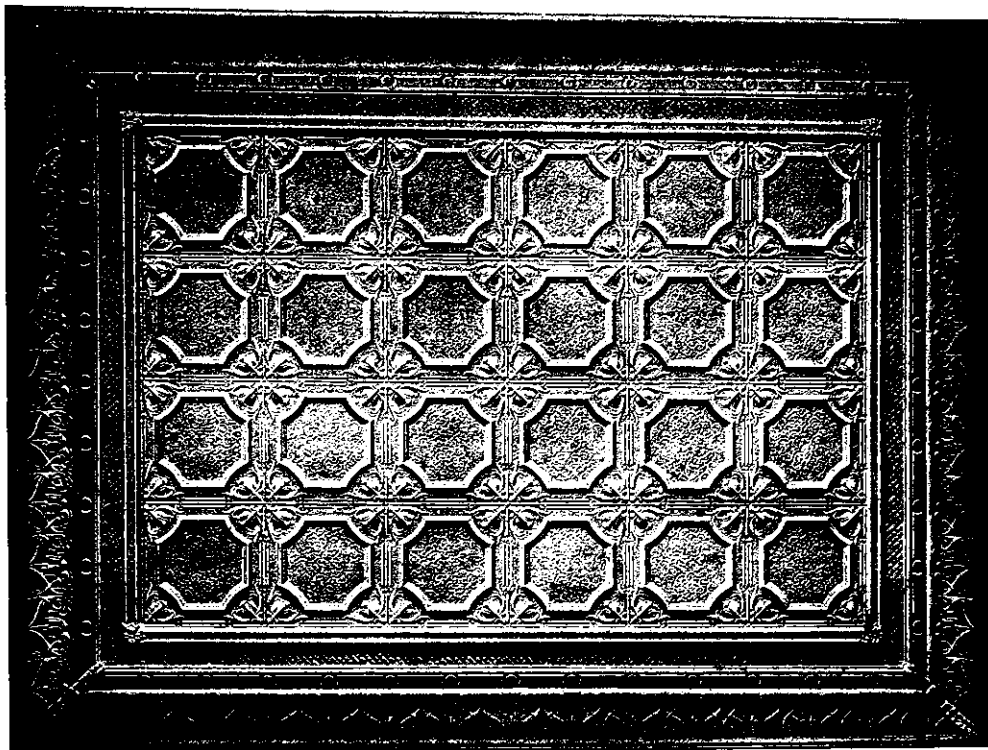


# "ALL BRITISH" MANUFACTURE.

## WUNDERLICH ART METAL CEILINGS

Are made in Wellington, New Zealand, of entirely British Materials, by N.Z. Workmen. Can be supplied in great variety of design from PLAIN EFFECTS to BOLD RELIEF, and are suitable for all classes of buildings. They are proof against the effect of earthquake and have saved many a building from destruction by fire. The effects are pleasing and harmonise with any style of architecture.



## BEAVER BOARD Makes Walls that will Not Crack.

(Made in Canada)

BEAVER BOARD is easier to erect than laths and plaster or paper and scrim. It is more attractive, more sanitary, more permanent, and it is cheaper. Once Beaver Board is set up it will STAY up.

BEAVER BOARD is made from Pure White Spruce Fibre, rigidly compressed into panels, surface sealed and sized front and back. That's why it is so durable.

BEAVER BOARD is a non-conductor of heat and cold. It is sound-proof, insect-proof, and proof against climatic changes.

BEAVER BOARD is supplied in panels 3 feet and 4 feet wide and from 6 feet to 16 feet long.



**BRISCOE & Co. Ltd.,** SOLE AGENTS FOR  
NEW ZEALAND.

Will be glad to send you Samples and Illustrated Literature free on application.

**Huckland, Wellington, Christchurch, Dunedin, Invercargill.**