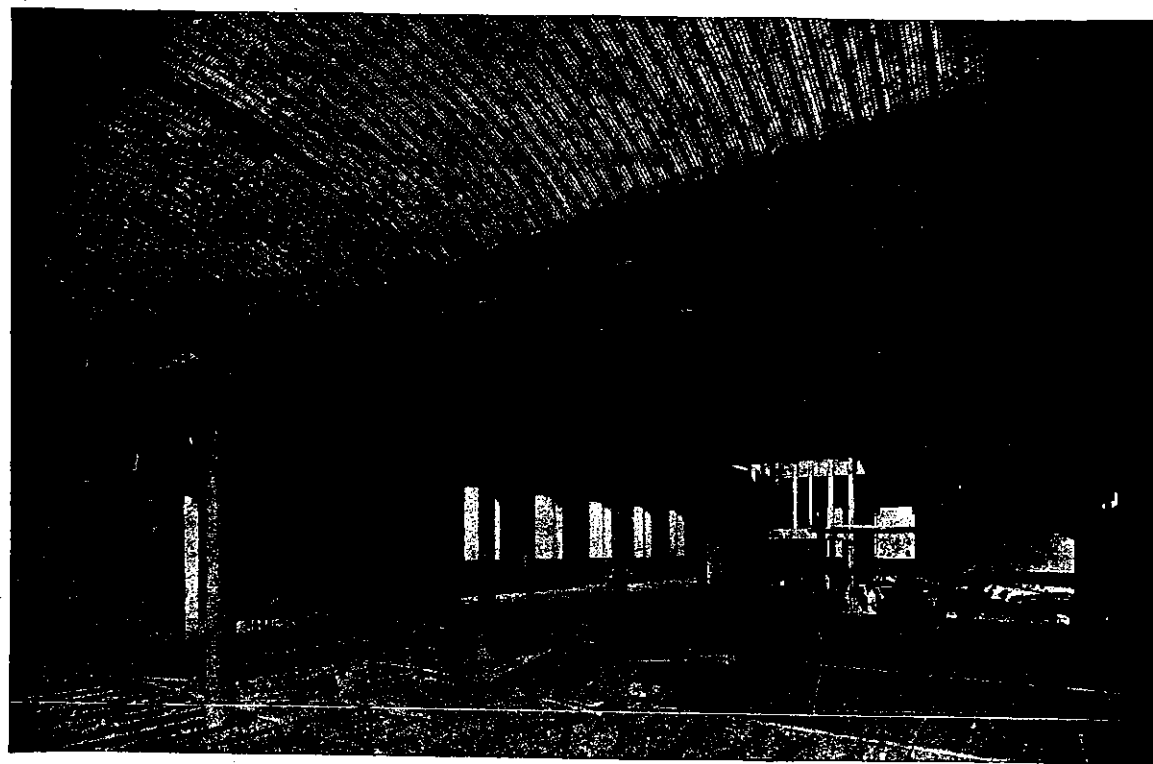


Arched "HY-RIB" Floor before concrete is poured. "HY-RIB" provides in itself the centering and reinforcement.



"HY-RIB" Floor after Concreting. Ready for Plaster finish.

Sole Agents for N.Z.

JOHN CHAMBERS & SON, LTD.

**Auckland, Wellington, Gisborne,
Christchurch and Dunedin.**

Mention of "Progress" when writing ensures prompt attention