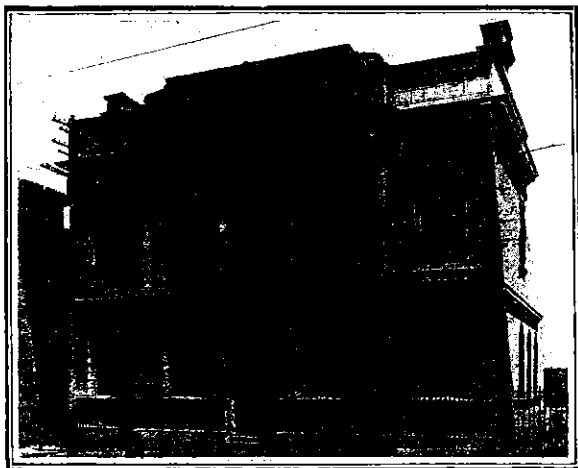


# Champion's White Lead

You should always specify this **guaranteed pure commodity**: Champion's White Lead. Allow no man, for any reason of his own, to divert you from it.



It lasts longer because *it is the best*.

For the same reason *it is the cheapest*.

Being a pure tint it never jeopardises a dainty shade.

Finely ground and possessing much density it *covers the greatest surface* with the least labour.

Is essentially *Genuine "stacked" White Lead*, containing no baryta, and is not compounded of cheap Foreign products.

**OF ALL MERCHANTS.**

Wholesale Distributing Agents: GOLLIN & CO., PTY, LTD., Auckland, Wellington, Christchurch, Dunedin, and in Australia.

**Manufacturers: CHAMPION, DRUCE & Co., Laurence Pountney Hill, LONDON.**

C.H.'s-26

1



## "FAMA" Flooring

MADE IN

**NEW ZEALAND**

**F**ORTUNATELY we have large stocks on hand, and as we are procuring our raw materials from British sources, it is now most unlikely that shortage of supplies will prevent us from carrying out the large number of contracts on our books.

**The FAMA Stonewood Co. Ltd.,**

Factory: Madras St., CHRISTCHURCH.

## PILKINGTON BROS. LTD.

MANUFACTURERS OF

### BRITISH POLISHED PLATE GLASS & SHEET WINDOW GLASS

PLAIN & BEVELLED MIRRORS  
FIGURED ROLLED — PLAIN ROLLED  
WIRED GLASS

In ROLLED, CAST & CLEAR POLISHED PLATE

(Insist upon Pilkington's Wired Glass: all others are imitations)

ASK YOUR DEALER FOR

### BRITISH SHEET GLASS

It has no equal.

Note  
The Maltese Cross Brand,  
thus

Try Pilkington's  
Patent Prismatic  
Glass

Makes Dark Places Light.

WRITE FOR SAMPLES.

Fred. W. Butcher,

Agent for N.Z.:

Wellington, P.O. Box 904

Auckland, P.O. Box 1094

Works: St. Helens, England.

