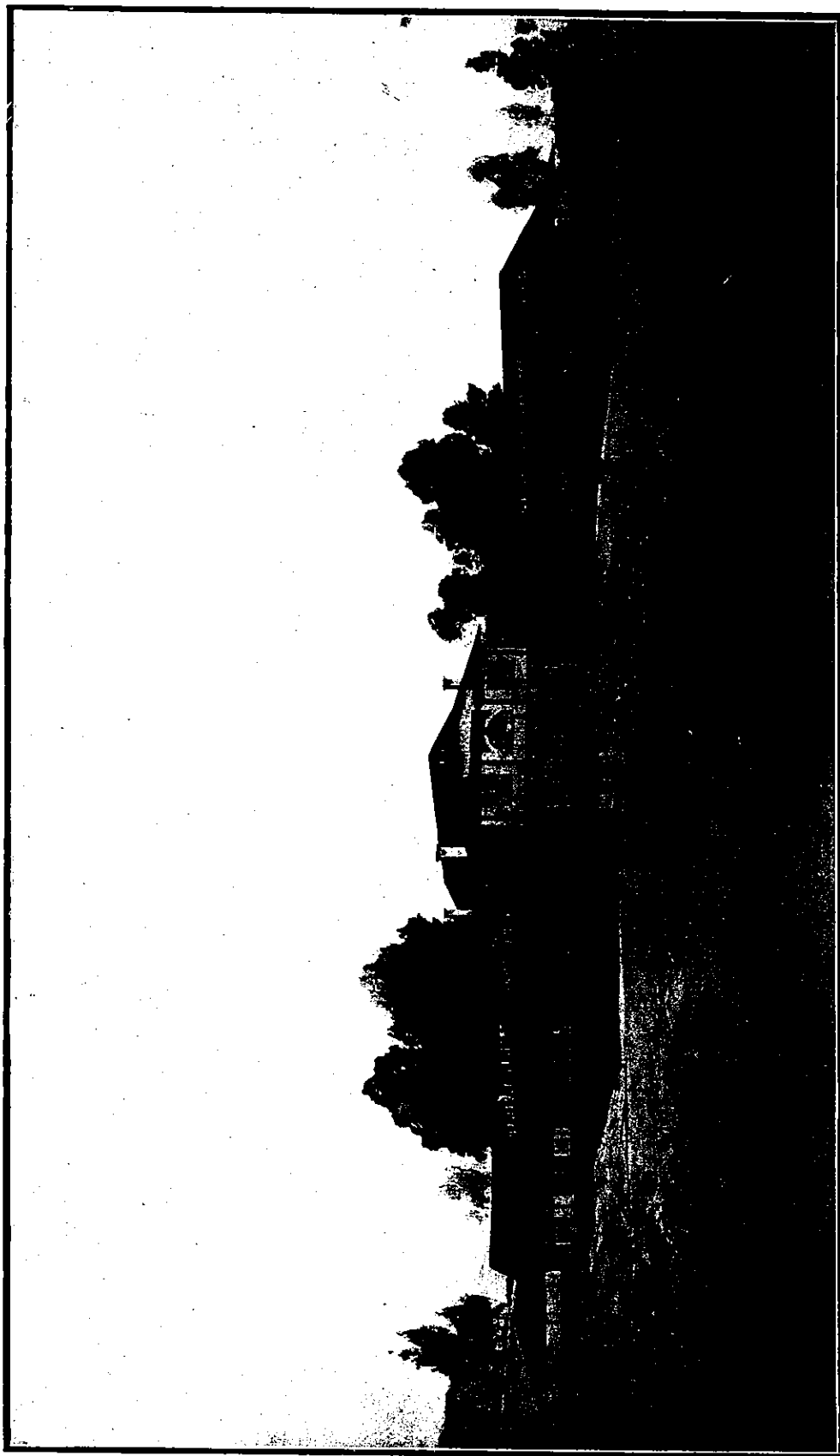


Messrs. Ed. Bartley & Son, Architects, Queen St., Auckland



KNOX HOUSE FOR INCURABLES, WEST TAMAKI, AUCKLAND

These Buildings are just approaching completion and the institution is to be formally opened on the 15th August. Provision has been made for 60 patients with ample accommodation for the requisite staff of nurses, etc. The buildings are of brick and concrete and are wholly fire-proof throughout. The design is of a homely and picturesque character harmonising most pleasantly with its surrounding landscape. The work has been carried out by Messrs. Johns & Sons, Builders, at a cost of £20,000.