

Champion's White Lead

You should always specify this **guaranteed pure commodity**: Champion's White Lead. Allow no man, for any reason of his own, to divert you from it.



It lasts longer because *it is the best*.

For the same reason *it is the cheapest*.

Being a pure tint it never jeopardises a dainty shade.

Finely ground and possessing much density it *covers the greatest surface* with the least labour.

Is essentially *Genuine "stacked" White Lead*, containing no baryta, and is not compounded of cheap Foreign products.

OF ALL MERCHANTS.

Wholesale Distributing Agents: GOLLIN & CO., P'TRY, LTD., Auckland, Wellington, Christchurch, Dunedin, and in Australia.

Manufacturers: CHAMPION, DRUCE & Co., Laurence Pountney Hill, LONDON.

C.H.'s 26

1



"FAMA" FLOORS

A few of the larger
Works Recently
Completed:

Dominion Buildings, 1,000 sq. yards and Staircases
Isolation Block Christchurch Hospital, 1,000 sq. yards
Residence, Heathcote, 300 sq. yards, with Skirting
Invercargill Hospital, 300 sq. yards, with Skirting
Railway Offices, Christchurch, 1,000 yards with Skirting
Customs House, Christchurch, 350 yards with Skirting
Corridor, Christchurch Hospital, 350 yds. with Skirting

Full particulars and Samples on application

The FAMA Stonewood Co. Ltd.,

143 Madras St., CHRISTCHURCH.

Sole Licences for manufacture of FAMA in New Zealand.

PILKINGTON BROS. LTD.

MANUFACTURERS OF

BRITISH POLISHED PLATE GLASS

PLAIN & BEVELLED MIRRORS
FIGURED ROLLED — PLAIN ROLLED
WIRED GLASS

In ROLLED, CAST & CLEAR POLISHED PLATE

(Insist upon Pilkington's Wired Glass; all others are imitations)

ASK YOUR DEALER FOR

BRITISH SHEET GLASS

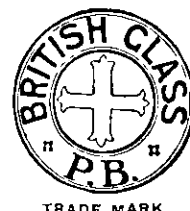
It has no equal.

Note —
The Maltess Cross Brand—
thus—

Try Pilkington's
Patent Prismatic
Glass

Makes Dark Places Light.

WRITE FOR SAMPLES.



TRADE MARK

Fred. W. Butcher,

Agent for N.Z.:

Wellington, P.O. Box 904

Auckland, P.O. Box 1094

Works: St. Helens, England.