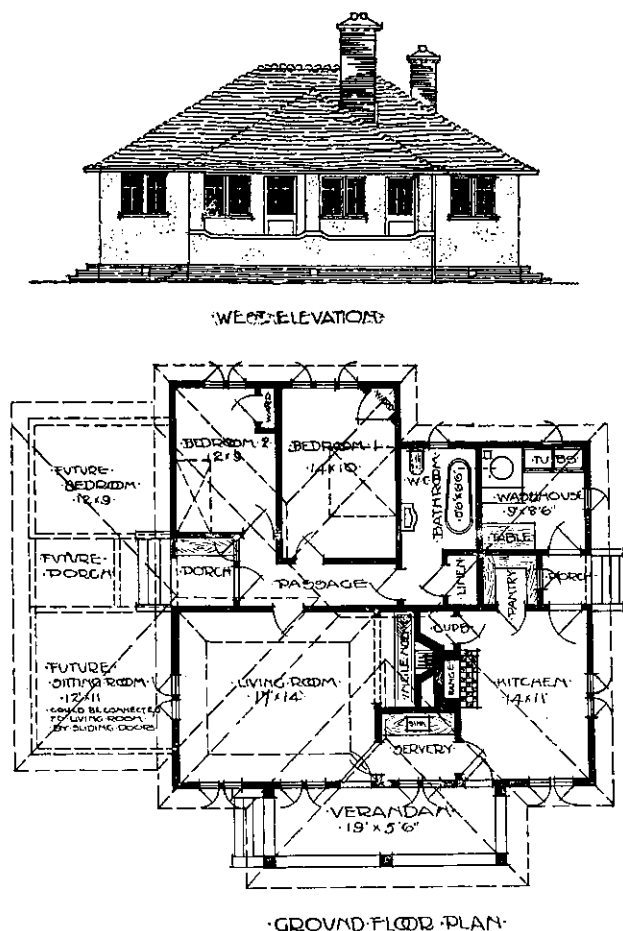


and roomy, but bedrooms rather too small, whilst the open porch is larger than need be. This student makes the mistake of placing the cottage too near the boundary of the section, otherwise the lay-out is fairly good. Details artistic though not too refined. The drawings are creditably finished, and show promise of future achievement.

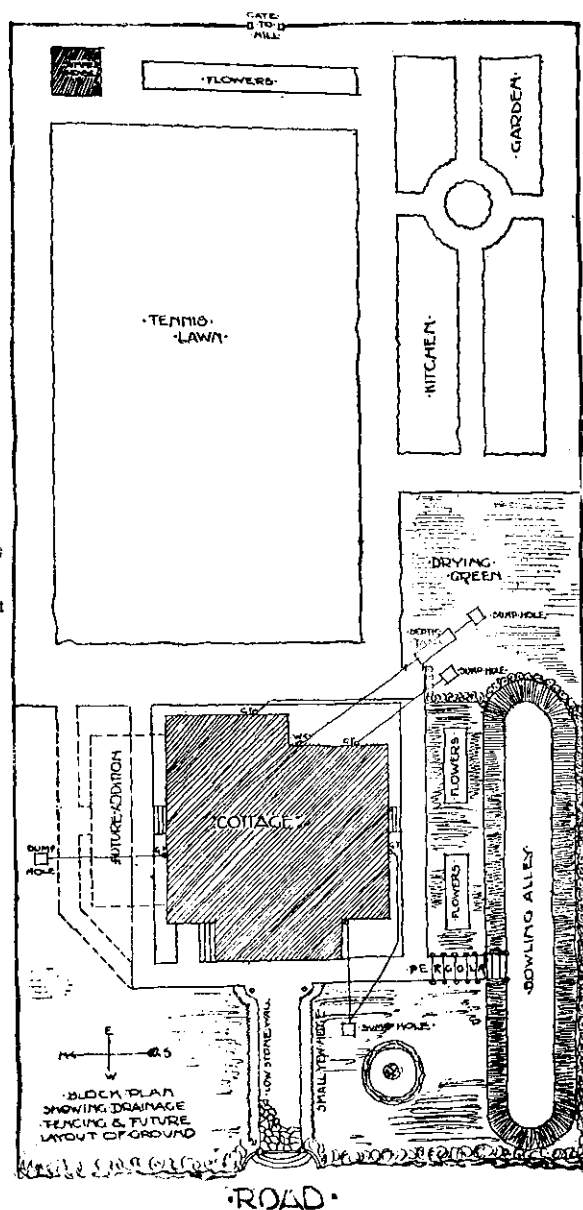
internal details are quiet and restrained. Future additions would mutilate the original building rather too much. 'Economy' has made the most of his opportunities in laying out the small estate, and the grounds are excellently well arranged. Choice of materials fairly good, though corrugated iron is not an ideal roof covering and the amount our



Design by Henry O. Mealand (Veritas) with Mr. Gerald Jones, Lic. R.I.B.A.,
Architect, Auckland

"'Boulder.'—Well planned as regards points of compass, and rooms nicely arranged. More future accommodation has been provided than was asked for, and the immediate accommodation plainly exceeds the cubical contents necessary to permit the cottage to be erected for the stipulated sum. The attic sitting-room is a somewhat novel idea, and possibly might appeal to our imaginary client. Much thought has been expended on the arrangement of the grounds, which are well planned, although it would have been better if the tennis lawn and bowling alley had been contiguous. Materials for construction are well chosen, and the elevations are simple and cottage-like. There are fewer small faults in this design than in most of the others.

"'Economy' (placed first).—A capital plan, with exception of kitchen portion, which is a trifle too congested. The living-room is well placed, and commands a good view. Elevations as well as



client is supposed to spend would admit of something more attractive.

"'Pyramid' sends an exceedingly good design, which, however, is not without faults. For instance, the living room fireplace is carelessly placed and that in the upper bedroom could well be dispensed with. The planning of the future rooms in the roof is not too satisfactory. 'Pyramid' and 'Economy' have evidently some ideas in common, and both show a good arrangement of the grounds, which are well observed from the main verandah.