

ELECTRICITY.

The Borough of Timaru has entered into a contract with Messrs. Scott Brothers to do the public lighting of the town for a period of 21 years, and have given the company the sole right to distribute electric current within the borough for the same period, reserving to themselves the right to purchase the installation at any time during that period.

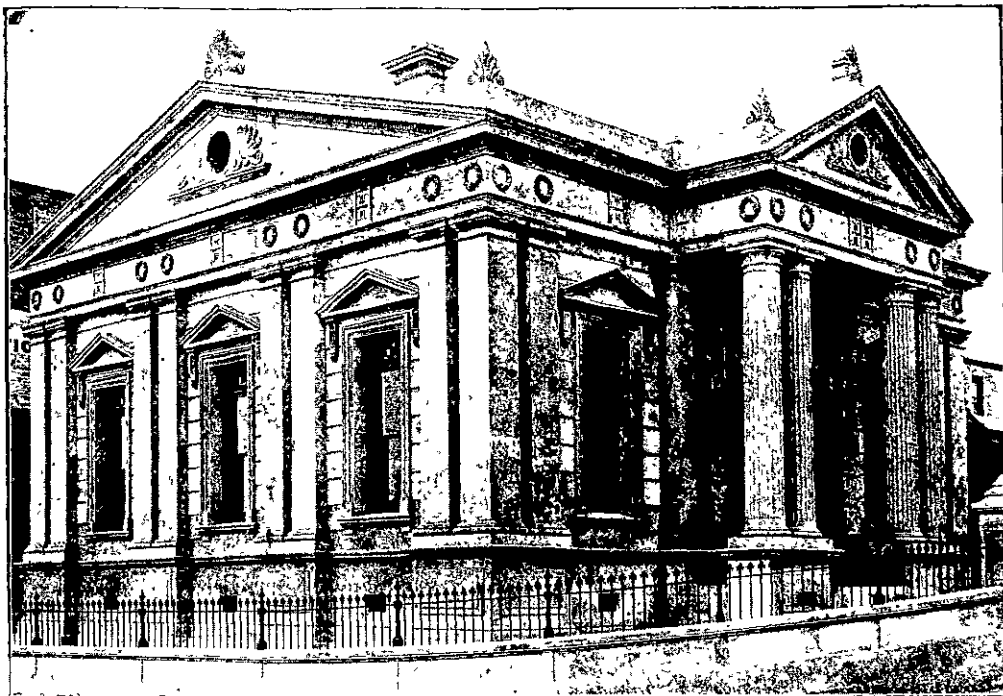
Messrs. Scott Brothers are at present erecting the generating station on a site on the railway siding and near to the premises of the Timaru Milling Co. It is proposed to instal to begin with two sets—one a direct coupled set with Belliss & Morcom quick-speed compound engine coupled to a 70 kilowatt generator.

The other set is composed of a 110 kilowatt generator driven by a horizontal cross compound steam engine of 150 horse power.

The installation is to be on the three wire system with a voltage of 440 between the outers, the current being distributed to consumers at a pressure of 220 volts.

It is expected that one of the generating sets will provide sufficient current for some time, but Messrs. Scott Brothers are installing 450 horse power in boiler capacity in 3 units so that the two sets may be run at once, if necessary, still leaving one spare boiler in case of breakdown or repairs.

It is expected that the whole system will be running in about four months from the present date.



CUSTOM HOUSE TIMARU.

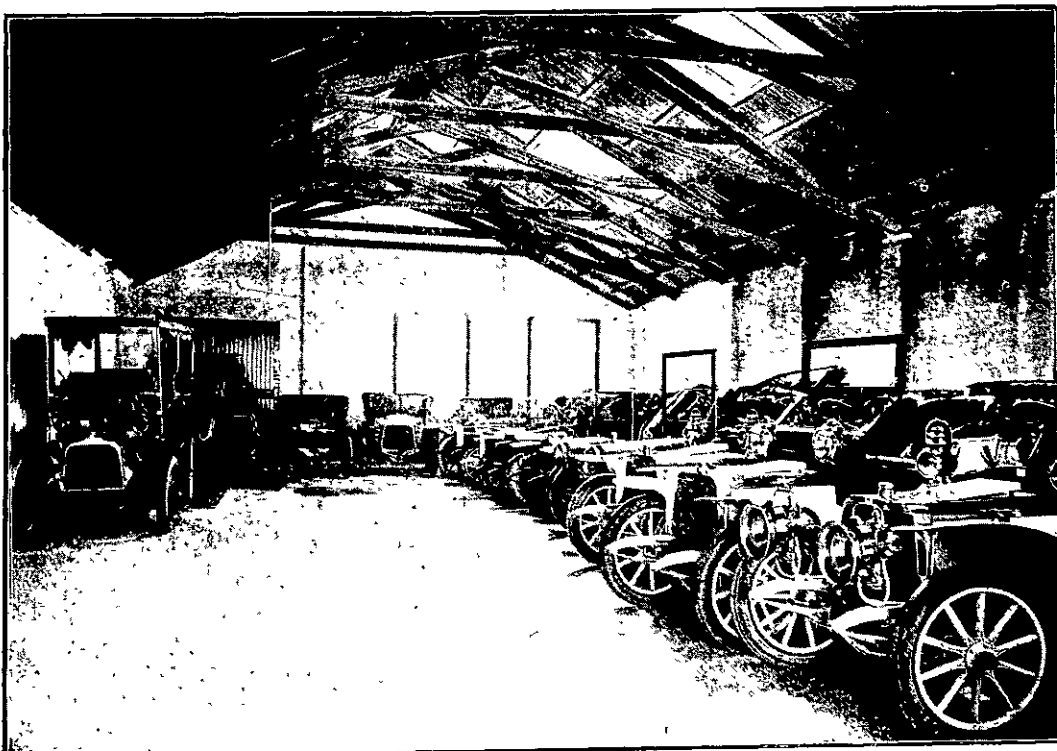
"PROGRESS."

Enclose Postal Note for five shillings,
and you get the best monthly in the
Colony.

No. 2, Chancery Lane, Christchurch.

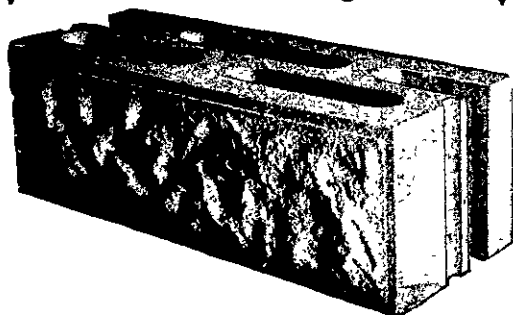
J. G. Jarrett,
Consulting and
Inspecting Engineer.

Machinery Valuator.
Reports prepared, reliable and confidential.



MESSRS SKEATES AND BOCKAERT'S MOTOR GARAGE.
The Cars for the Mt Cook Motor Service were supplied by this firm.

**The Great New
Industry.**



MIRACLE BLOCKS.
BEST ON EARTH.

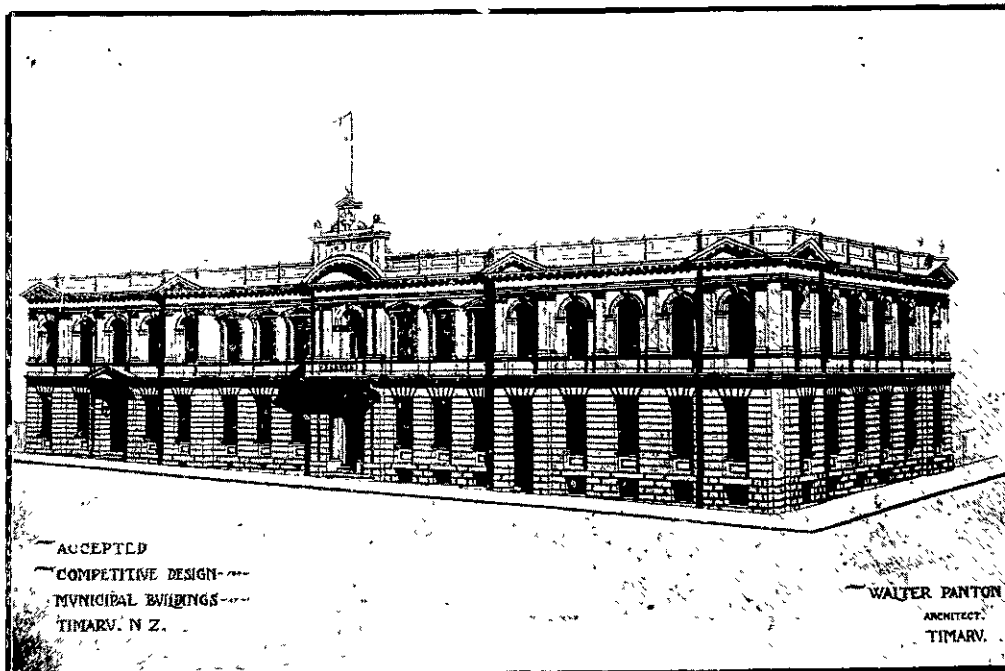
Machines etc., for everything in the Concrete
Line manufactured by the

Miracle Pressed Stone Co., U.S.A.

SOLE AGENTS

C. A. HAMLIN & CO.,

AUCKLAND, and CHRISTCHURCH EXHIBITION.



TIMARU TOWN HALL—COMPETITIVE DESIGN (THE PRIZE WINNER).