

Tenders are being called by Mr. J. S. Swan, architect, for the erection of two buildings at St. Patrick's College, Wellington. One building will contain all conveniences, while the other will contain six large class rooms.

* * * * *

Tenders will shortly be called for the additions to wool stores on West Quay, Port Ahuriri, for Messrs. Dalgety & Co., Ltd. The plans show an extension of 75 feet to West Quay, making a total frontage of 151 feet, by a depth of 150 feet. The same firm's new brick wool store and offices at Dannevirke and the additions to wool store at Gisborne, have now been completed at the cost of about £2,600 and £1,900 respectively. The architect has also in hand the alterations for this firms' offices at Port Ahuriri.

* * * * *

The new Presbyterian Church at Hastings has been erected after the old English style of architecture and presents a quaint and restful appearance. In the lofty spire of 130 feet there is accommodation for two classrooms, each 11ft. 6 inches square. Some of the chief dimensions of the building at present are :—length 55ft. by width of 49ft., with a total height from floor to roof of 35ft. The vestibule measures 11ft. square, but the main body of the church is 40 ft. long by 48ft. wide with a seating accommodation, including that provided by the galleries which run down the length of the building on either side, for about 500 people. The church is lit by two 3-light and four 2-light windows on each side, and one large 3-light window in the south wall. All the windows are glazed with lead-lights manufactured by R. Martin of Wellington.

The building was erected at a total cost of £1,836, including the seats, pulpit, etc. It is anticipated that at an early date an additional bay or two for which provision has been made, will shortly be needed for the increasing congregation. Architect, C. Tilleard Natusch.

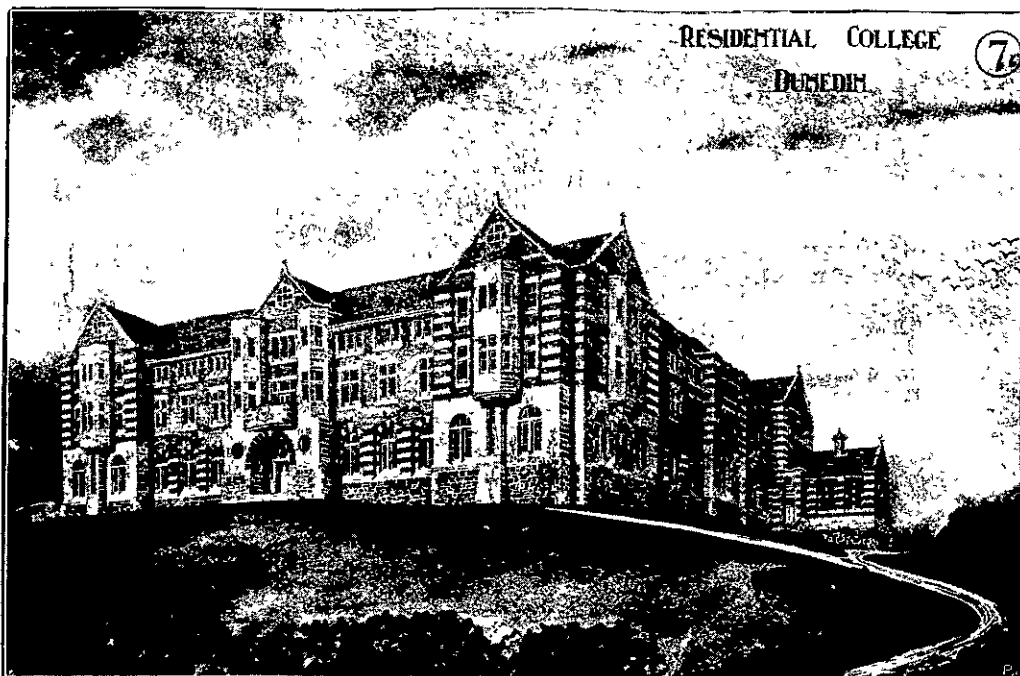
* * * * *

Messrs. England Bros. report the following contracts as being completed in Christchurch :—N.Z. Insurance Co. (additions) Hereford street, contractor J. Hammett ; T. Crompton & Sons, Tuam street, (two-story show room and factory), contractors, D. Scott & Son ; Two houses Tai Tapu, contractors, A. G. Munns & Taylor Bros. ; nine roomed residence, Dunsandel, contractors, Beanland & Keates ; Grand Stand, Ashburton, Ashburton County Racing Club, contractors, J. Smith & Sons ; shops, Colombo street, contractor, J. Hammett.

The tenders of the following have been accepted :—House, Fisher street, contractor, S. Butler & Son ; residence, St. Albans, contractors, S. Butler & Sons ; shop, (T. Gapes & Coy.), Victoria street, contractor, A. Gee ; premises (Dalgety & Coy.) Cathedral square, contractors, Graham & Greig ; premises (Bank of New Zealand), Leeston, contractor W. T. Maher ; residence, Cashel street, contractor, G. Petrie ; residence, Rakaia, contractor, W. T. Maher ; residence, (H. White), Gisborne, contractors, Rupas & Neville ; residence, Wakanui, contractor, P. Gourdie ; Farmers' Co-operative Stores, Cashel street, contractors, D. Scott & Son ; residence, Springfield road, contractor, P. Wilkinson ; Wesleyan Church, Opawa, contractors, Robinson & Sons.

* * * * *

Plans have been passed by the Onslow Borough Council authorising the construction of a bridge at Khandallah about 92ft.

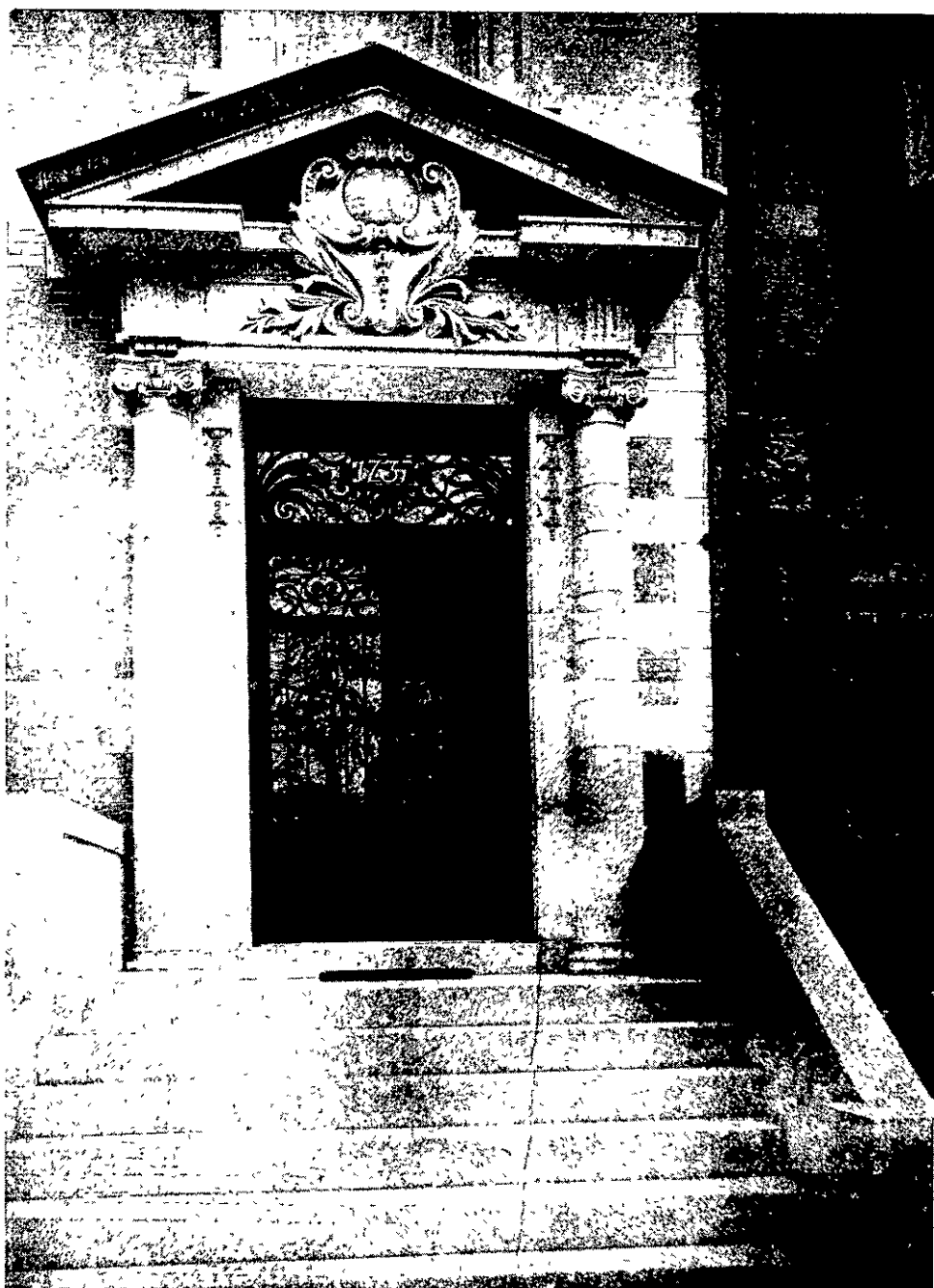


PRESBYTERIAN RESIDENTIAL COLLEGE, DUNEDIN.

[Designed by B. Hooper, Architect.] (Second)

long, 32ft. high, and 12ft. wide. The bridge, an overhead one, is to carry traffic over the Manawatu Railway Company's line, and is to

be erected on the Sunny Bank estate by that estate company. The designer is Mr. Rounthwaite.



ENTRANCE OF A TYPICAL NEW YORK MANSION.