

Our Industries.

NO. XVII.

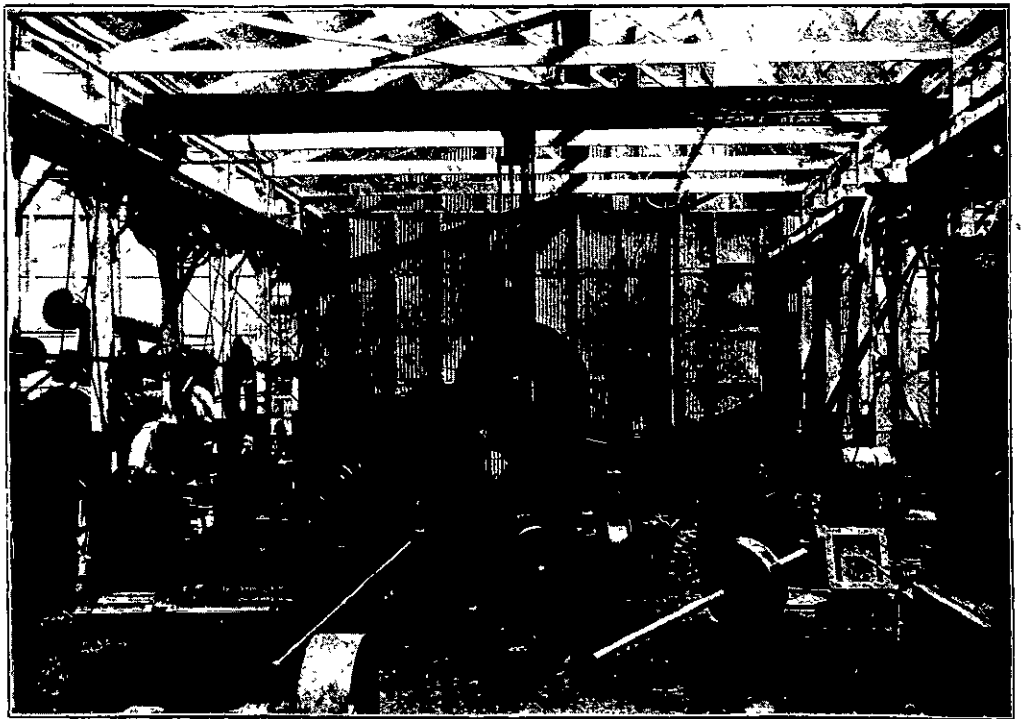
Messrs. Jas. J. Niven & Co.'s
Foundry, Napier.

PEOPLE are often surprised when they learn that Hawkes Bay, that district of prosperous sheepfarmers, can boast such a complete and modern foundry as that of the Napier firm of engineers, Messrs. Jas. J. Niven and Co. The first beginnings of the business were established over twenty years ago, and since then it has steadily been making its way, until now it has attained a position of premier importance amongst the engineering firms of the Colony. The Head Office and Works are situated at Port Ahuriri adjacent to all the shipping that comes to the Napier roadstead or wharf, and the establishment is consequently able to attend promptly to their demands. The buildings forming the works comprise the following departments amongst others:—

The Iron and Brass foundry and Machine shop, which, as may be seen from the accompanying photograph, will compare favourably with any in the Colony. Our representative saw also buildings devoted exclusively to boiler making, coil making for Ammonia Condensers and other refrigerating appliances.

At one portion of the works they were busy with a side line in the shape of an iron fencing standard which it is confidently expected will become of almost universal benefit.

which apply to many other professions and trades apply also to engineering, and in this respect Messrs. Jas. J. Niven & Co., are not behind the times as is shown by a glance at

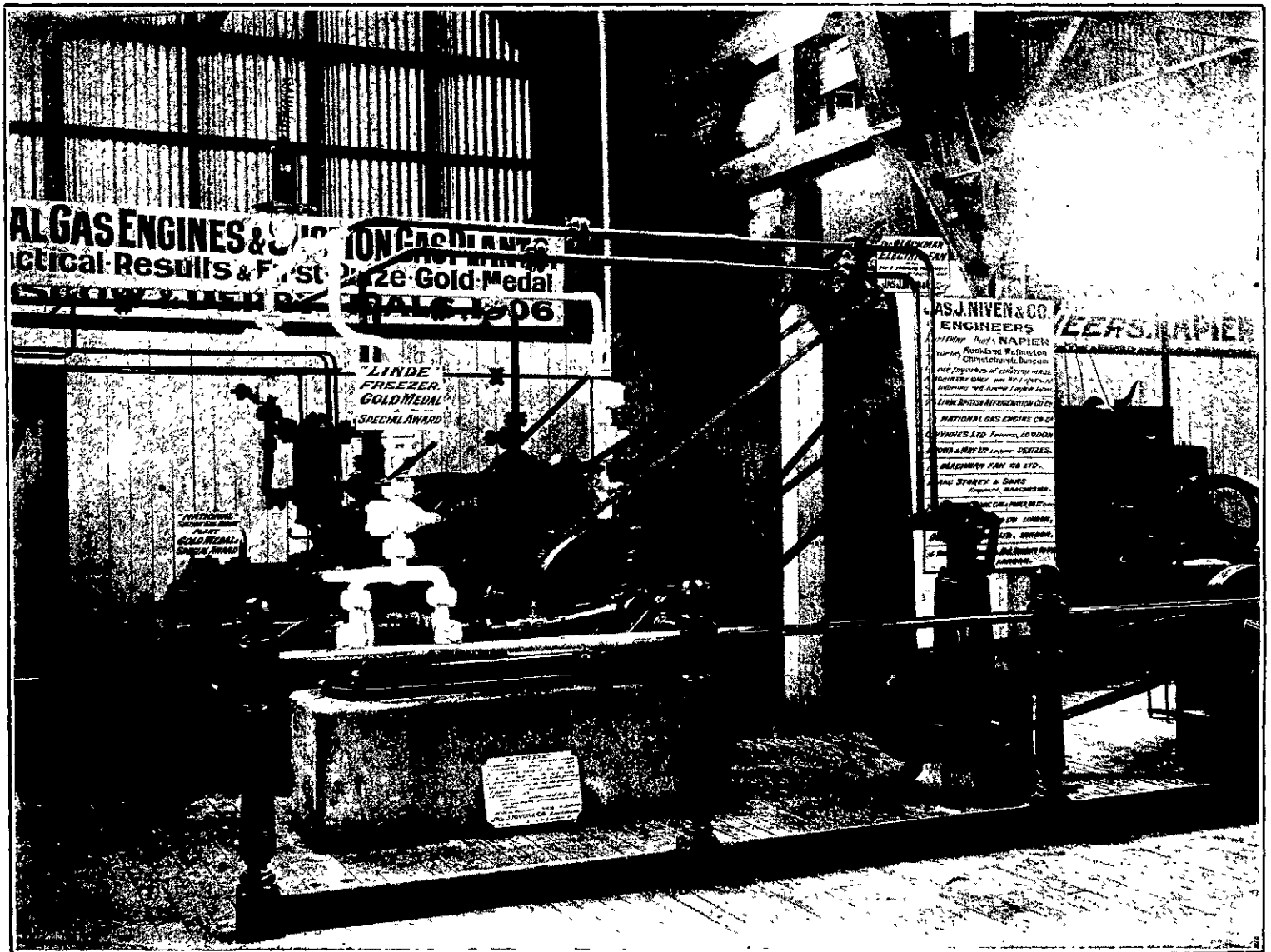


THE ERECTING DEPARTMENT.

The Pattern shop, which is an extensive two-storey fireproof brick and concrete building.

In these days it seems necessary to specialise, and it would appear that the principles

their warehouse, where they stock their engineering supplies. They have made it their business to meet the demands of the engineering trade and it is curious but true, that this Napier firm can supply many



LINDE BRITISH REFRIGERATING MACHINERY AND NATIONAL GAS PLANTS, exhibited at the Christchurch Exhibition by Messrs. Niven & Co.