

riched trusses. Over the first floor windows a band of diaper work has been introduced with good effect, the materials used being stone and flint work in alternate squares. The corner (an acute angle) is surmounted by a battlemented turret in rock-faced stone with carved enrichment over windows. The building is roofed with Marseilles tiles. The accommodation comprises five shops with office at rear of each, the corner shop having basement floor in addition. The upper floors are subdivided into offices and showrooms, access to same being gained by electric lift as well as stairs. Architects, Clarkson & Ballantyne; contractors, Renne & Pearce.

Presbyterian Church.

ERECTION OF RESIDENTIAL COLLEGE, DUNEDIN.

A TENDER ACCEPTED.

The tender of F. W. Lyders for £18,607 has been accepted for the erection of the Residential College for the Presbyterian Church of New Zealand. The main building of the college will be three storeys high, while the tower will be carried up to a height of five stories. The main entrance, on the ground floor, is placed in the centre of the front of the tower, and leads into the entrance hall from which access is gained to the visitors' and attendants' rooms. The floor of this hall will be tiled and the walls finished in Keene's cement, while the ceiling will be finished in fibrous plaster. The appearance of the hall will be greatly enhanced by a series of three arches at the end of it, and by the main staircase which starts from under the central arch. Close to the hall are the common room and the three theological class rooms, one of which will be used as a library at present. At the back of the class rooms the dining hall is placed, which will have wood panelled walls and an open timber roof. The light to this room is given by four large traceried windows, filled in with leadlights. A service room leads from the dining hall to the kitchen, quarters, and ample accommodation has been allowed for, as there will be a large kitchen, pantry, larder, scullery, stores, etc. The servants will have their own dining and sitting rooms, with bedrooms above, and will be entirely cut off from the students' quarters. The principal's residence, which contains 11 rooms, is shown in the front of the building. On the first and second floors there are 30 bedrooms and 15 studies, and also the necessary bathrooms, lavatories, linen stores, etc. Provision has been made for a laboratory and students recreation room on the top floor of the tower. The interior walls will be finished in plaster, the ceilings in zinc and steel, the main staircase will be constructed in concrete to minimise the danger of fire. The exterior is late Gothic. It will be finished in red brick, relieved with Oamaru stone dressings, mouldings, etc. as may, in fact, be in every way understood from our illustration (page 304). Messrs. Young & Salmond are the Architects. Twelve tenders were received for the erection of the college.

BUILDING NOTES.

The Auckland Harbour Board has decided to erect a wharf at Albany, at a cost of £300.

Tenders close for a Post Office at Waikanae, June 10th. John Campbell, Government Architect.

The additions to Monastery Mount St. Gerard are being carried out by Messrs. Jorgenson Bros. from designs by Mr. John S. Swan, Architect.

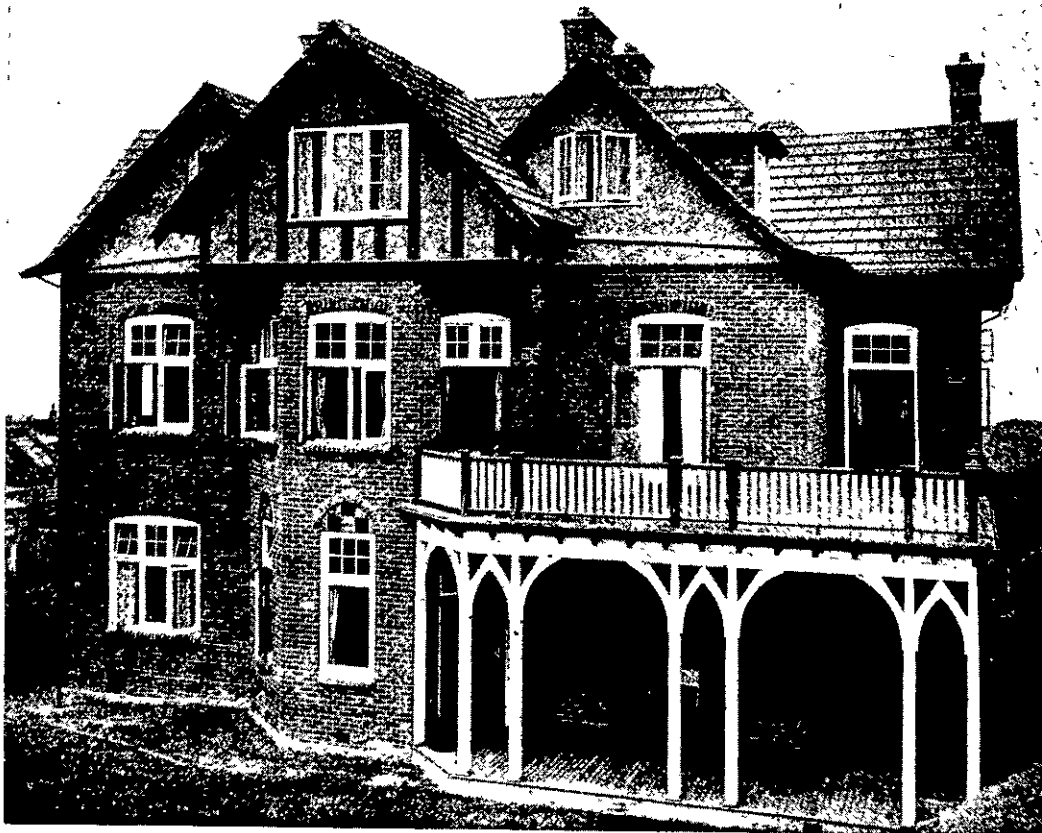
Mr. W. H. Nivens has signed the contract for the erection of residences, Oxford Road. Twenty tenders were received by Mr. John S. Swan, Architect.

Mr. W. Gray Young, architect, has started the practice of his profession at his office, No. 5 Hunter street, Wellington.

Mr. J. S. Swan has been instructed to prepare plans and specifications for additions to the classroom of St. Patrick's College. Tenders will be called shortly.

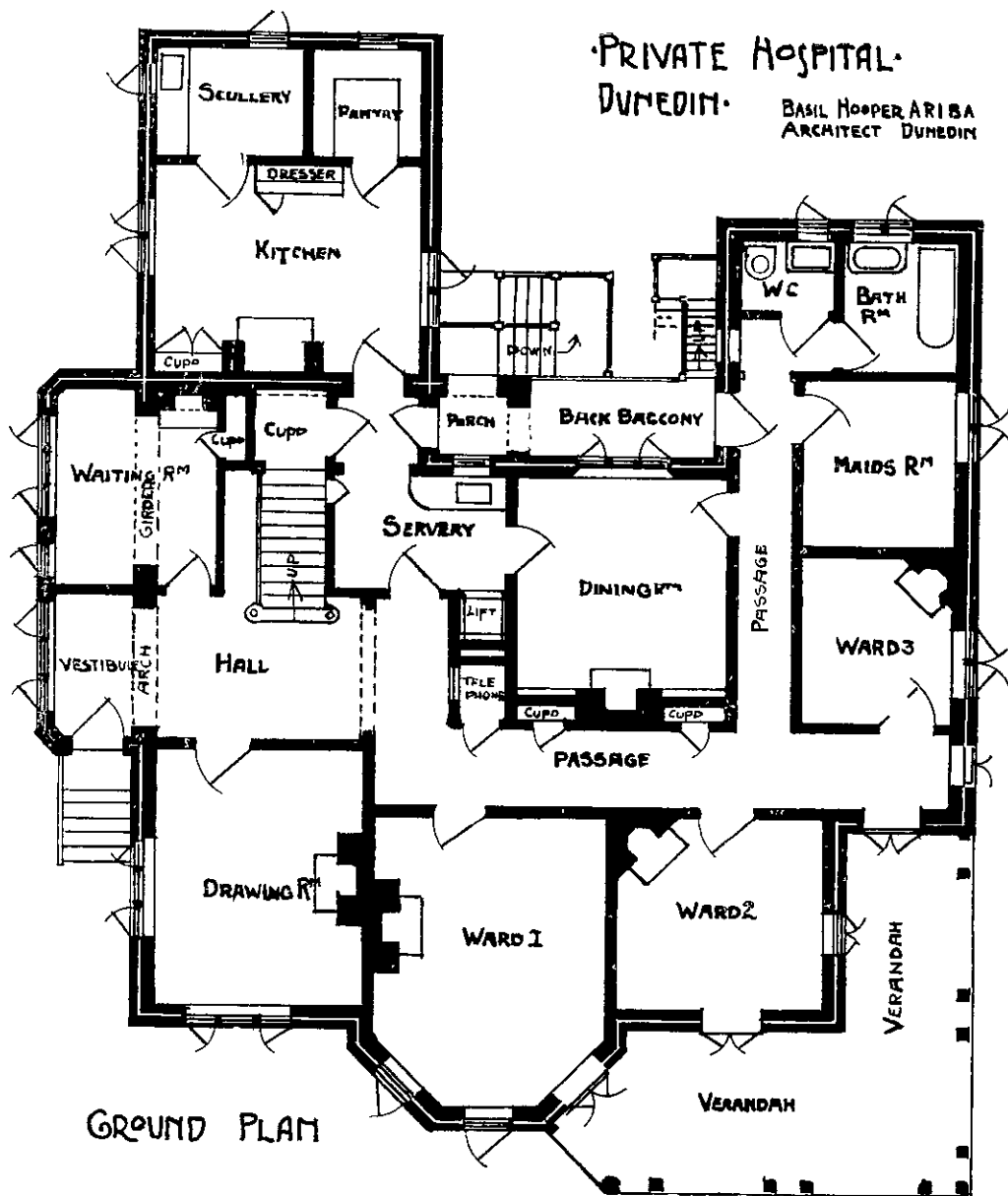
Tenders will be called shortly for the erection of a tea kiosk, grandstand, skating rink and concert hall at Miramar for the Athletic Park and Wonderland Company. Mr. J. S. Swan is the architect.

Mr. Campbell Colquhoun, at one time building supervisor for Mr. E. O. Peers, is now clerk of works of the "Palace Private Hotel," building in Willis street. Over seven hundred thousand bricks (their own make) have been used in the construction by the contractors, Messrs. J. Trevor and Sons.



PRIVATE HOSPITAL, DUNEDIN.

[Architect: B. Hooper.



PRIVATE HOSPITAL, DUNEDIN. GROUND PLAN.