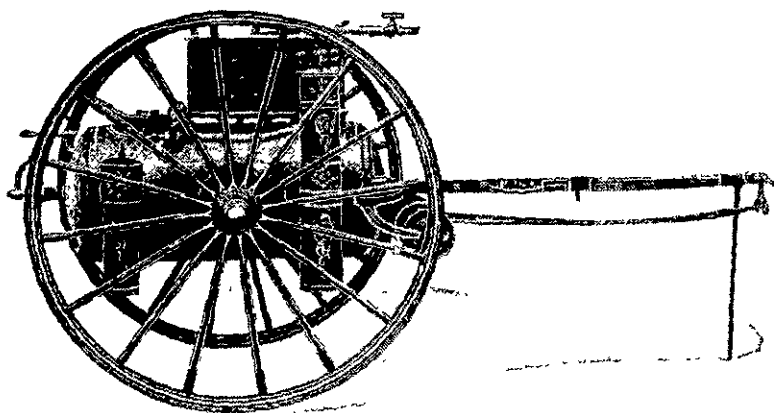


# THE "NOTT" Chemical Fire Engine.



THE CHEMICAL FIRE ENGINE is an established fact. Introduced in the first place as a sort of "first aid," to hold a fire in check while the water was being brought into action, its use has developed until fully half the outbreaks, in cities where it is available, are absolutely controlled by the Chemical. Here is a handy Chemical for small towns, villages, factories, isolated country houses, etc. Two men can handle it easily. It is ready for work on the instant. In 5 seconds it is throwing a jet 40 to 50 ft. from the nozzle. Each gallon of the Chemical fluid is worth 50 gallons of water. No fire can live under it.

No skill required to operate it. It generates its own pressure without burning any coal or gas to heat it up. A charge of chemicals costs about 5/- and may save thousands of pounds. We have them in stock for immediate delivery.

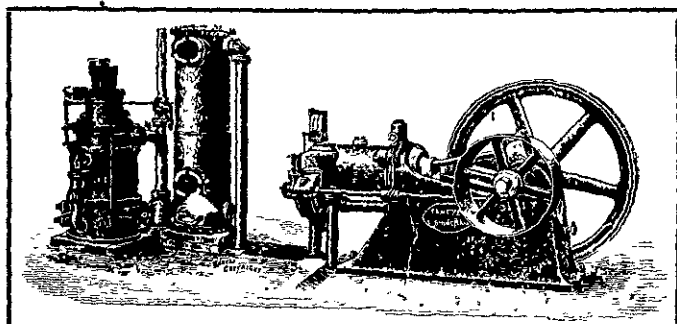
**Booth, Macdonald & Co., Limited,**  
SOLE AGENTS,  
**Christchurch, Timaru and Hastings.**

## TANGYES LTD.

UP TO DECEMBER, 1906, HAD OVER  
30,000 H.P. AT WORK OR ON ORDER IN

### SUCTION GAS ENGINES AND PLANTS.

40-h.p. Plants running in New Zealand on 2½  
Sacks of Gas Coke per Day.



THE NUMBER OF SATISFIED PURCHASERS IN THIS COLONY HAS  
GROWN TOO LARGE FOR PUBLICATION IN THIS SPACE.

WRITE FOR A LIST OF PURCHASERS, MANY OF WHOM HAVE GIVEN  
REPEAT ORDERS FOR THIS POPULAR MAKE OF ENGINE.

SOLE AGENTS IN NEW ZEALAND:

**JOHN CHAMBERS & SON, LTD.,**  
AUCKLAND, WELLINGTON, CHRISTCHURCH and DUNEDIN.

## "La Motosacoche"

The Marvellous Motor Attachment for Bicycles.

Why the "MOTOSACOCHE" has revolutionised  
Motor Cycling:

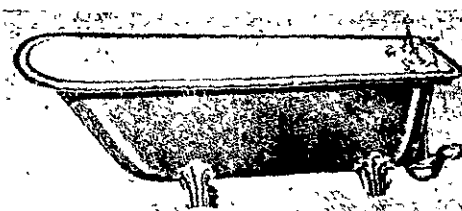
1. Its entire absence of vibration.
2. Total weight of Motor Cycle only 60lbs.
3. Almost entire absence of noise.
4. Absolute efficiency on hills or flat.
5. Simplicity of mechanism and ease of control.

Diagrams, &c., from Sole Wholesale Distributors:  
**CYCLE AND MOTOR SUPPLIES Ltd.,** Successors to  
HERBERT H. SMITH,  
FARISH STREET, . . . . . WELLINGTON.

For Sale by all Cycle and Motor agents in New Zealand.

## THE EMPORIUM FOR BATHS

In Cast Iron, Porcelain, Enamelled, Metallic Enamelled, Rolled Edged and  
Flanged Plate Zinc, and in Galvanised Sheet Iron. BATHROOM ACCESSORIES.



We stock the  
world's best and  
latest productions  
in Gas Pendants,  
Chandeliers, Hall  
Lamps, &c., and are  
in constant receipt  
of novelties in this  
direction.

TELEPHONE 118. **TAYLOR & OAKLEY,**  
WORKS: 234 TUAM STREET. SHOWROOMS AND WAREHOUSE:  
103 & 105 COLOMBO STREET, CHRISTCHURCH.