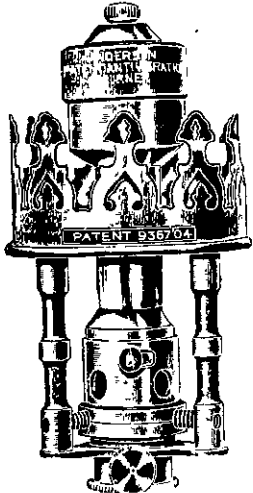


THE "ANDERSON" ANTI-VIBRATION Incandescent Gas Burner.

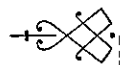
Patented in all Countries.

THE CHEAPEST AND MOST SCIENTIFICALLY DESIGNED ANTI-VIBRATION BURNER ON THE MARKET.

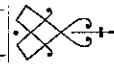


Ordinary Anti-Vibration Burner.

PROLONGS THE LIFE OF MANTLES FROM 8 TO 15 TIMES THEIR PRESENT DURABILITY.



British Manufactured Goods.



ADVANTAGES.

DOES NOT OBSTRUCT THE DOWNWARD LIGHT.

PATENT ANTI-VIBRATOR AND BURNER COMBINED

BURNER EASILY AND INSTANTLY DETACHED FROM NIPPLE.

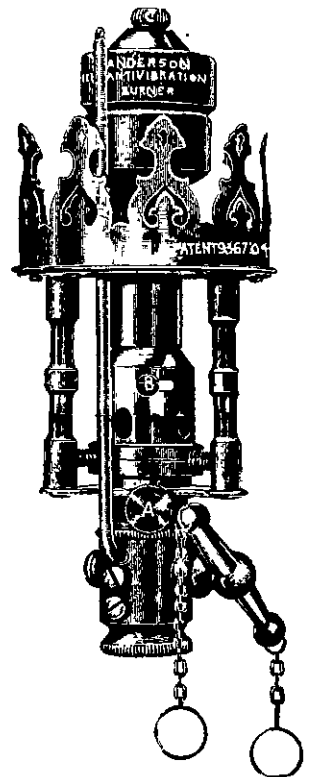
DOES NOT LIGHT BACK.

FREE FROM ROARING.

MANTLE ROD SECURELY HELD FAST OR INSTANTLY RELEASED IF BROKEN.

STEATITE RING FITTED TO EVERY BURNER HEAD.

EVERY BURNER FITTED WITH A STANDARDISED BRASS NIPPLE.

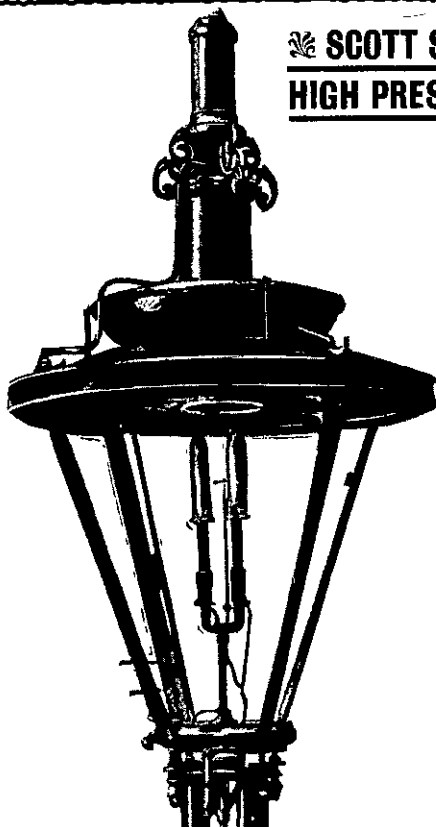


Complete Anti-Vibration Burner.

For Street Lighting, Railway Stations, Factories, Workshops, Warehouses, Churches, Licensed Houses, Shops, and Household Use.

**SCOTT SNELL
HIGH PRESSURE**

Gas Lamp.



TYPE OF DOUBLE BURNER LAMP.
1,200 c.p.
Consumes 28ft. per hour.

THIS Lamp has been scientifically tested in London, Paris, Berlin, New York, Chicago, St. Louis, Boston, and various other British and Foreign towns. All tests show **Maximum Efficiency.**

It has been applied to Docks—over 200 installed in one Dock. It has been applied to streets too numerous to specify. A typical installation may be seen in Whitehall and Parliament Street Westminster, **saving over £100 a year** in cost, and **giving seven times the amount of light** of previous system.

It has been applied to various **Halls, Hotels, Shops, Railway Stations**, and various other establishments.

COMPARED WITH COMPRESSING SYSTEMS

WE AVOID Expense of Special Service. Increased Leakage Losses. Expenditure for Power. Cost of upkeep of Compressing Plant. Dependence of whole service on working of Power Actuated Pumps, and various minor drawbacks.

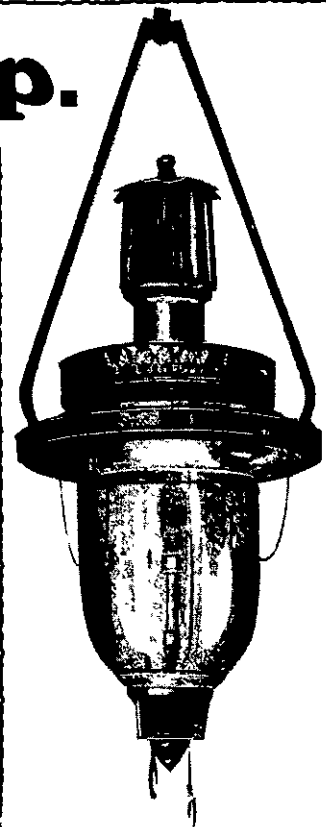
A street may be transformed in a single day by installing Scott Snell Lamps, **without disturbing street surface or traffic.**

Free of Cost, by means of **Waste Heat**, this Lamp provides itself with compressed air at nearly 2lb. per square inch pressure.

COMPOSITE BODY LAMPS.

Specification—These Lamps are constructed with detachable reservoirs and cylinders, making any part replaceable in a few minutes. Adjustment is much simplified. Working parts operate on knife edges. Weight considerably reduced. Working parts may be removed and replaced by spare section, and an examination or re-adjustment made at leisure.

Guaranteed gas consumption, 15ft. per hour.



TYPE OF SUSPENSION CIRCULAR LAMP. Over-all height, 54in. Width 16in. without globe.

SOLE LICENSEES AND
MANUFACTURERS :

D. ANDERSON & CO., Ltd.,

Lighting Engineers and Contractors,

TELEGRAMS : "DACOLIGHT, LONDON."

73 Farringdon Road, LONDON, E.C.