

# TANGYES, LIMITED,

Have now over 25,000 BRAKE HORSE  
—POWER at work and on order in—  
**SUCTION GAS PLANTS.**

*The following Plants are now at work in New Zealand :—*

- 39 Brake horse-power—Redwood Bros., Flourmillers, Blenheim.
- 29 Brake horse-power—Friedlander Bros., Grain Merchants, Ashburton.
- 29 Brake horse-power—Skelton, Frostick and Co., Christchurch.
- 88 Brake horse-power—Mephan Ferguson Steel Pipe Co., New Lynn.
- 115 Brake horse-power—Canterbury Roller Flourmills Co., Ashburton.

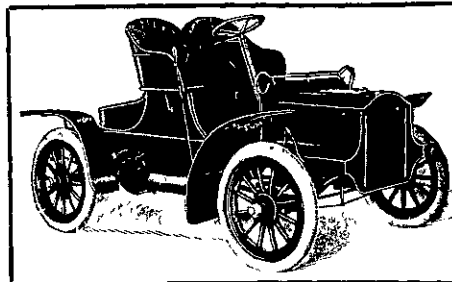
*On Order :—*

- 4½ Brake horse-power—Mr. J. M. Chambers, private electric installation, Auckland.
- 9 Brake horse-power—Alfred Nathan, Esq., private electric installation, Auckland.
- Two 88 brake horse-power—W. Dimock and Co., Wellington.
- 44 Brake horse-power—Tonson, Garlick and Co., Auckland.
- 10 Brake horse-power—Stock, Auckland.
- 17½ Brake horse-power—Stock, Auckland.
- 23 Brake horse-power—R. N. Spiers, Cabinetmaker, Foxton.
- 68 Brake horse-power—Macky, Logan, and Caldwell, Auckland.
- 13 Brake horse-power—W. T. Davies Co., Boot Manufacturers, Auckland.
- 52 Brake horse-power—West Coast Refrigerating Co., Ltd., Patea.
- 63 Brake horse-power—Conditional order, if 52 h.p. successful.
- 24 Brake horse-power—Humphries Bros., Wellington.
- 23 Brake horse-power—Waters, Ritchie and Co., Grain Merchants, Dunedin.
- 9 Brake horse-power—W. Goss, Sawmiller, Christchurch.
- 39 Brake horse-power—Anderson & Donald, Featherston.
- 29 Brake horse-power—John Coombe, Muritai.

SOLE N.Z. AGENTS :

**JOHN CHAMBERS & SON, Ltd.**  
AUCKLAND, WELLINGTON, DUNEDIN, CHRISTCHURCH, WANGANUI.

# The "CADILLAC"



The  
Car  
that  
Climbs.

Sole Agent for Wellington and Wairarapa  
Districts, from whom Catalogues and all  
Particulars can be obtained :

**Frank C. Matthews.**

**MATTHEWS' MOTOR GARAGE,**  
12 TARANAKI STREET EXTENSION - - - WELLINGTON.

# MERIDIAN LAMPS

Twice as efficient as Ordinary Glow Lamps. Light immediately  
on Switching on. LAST LONGER. Cost of Renewals same as  
Glow Lamps. No Delicate Parts to get out of order.

PERFECT DIFFUSION OF LIGHT.

GENERAL ELECTRIC CO.'S Generators, Motors, Arc Lamps and Appli-  
cances Supplied from Stock.

ELECTRIC MOTOR DRIVES FOR MILLS, FACTORIES AND WORKSHOPS.

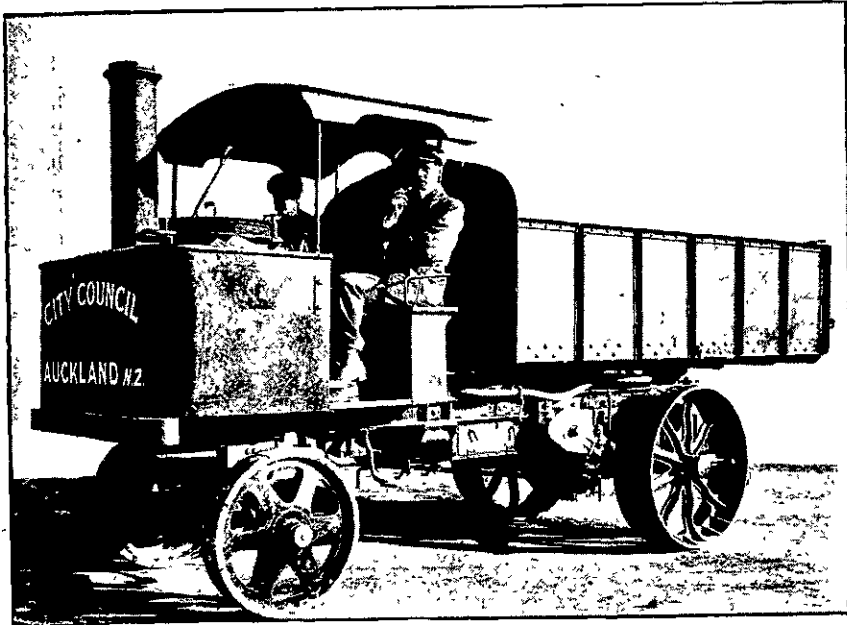
Estimates Furnished for Electric Lighting and Power Installation of any Magnitude.

**A. E. BROWN,** Electrical Engineer & Contractor,

Office and Workshop : MARTIN STREET,

Off Manchester Street.

**CHRISTCHURCH.**



# STRAKER STEAM VEHICLE

(As Supplied to the AUCKLAND and WELLINGTON  
CITY COUNCILS for Haulage of Road Metal)

**CAPABLE OF CARRYING 5 TONS  
AND DRAWING 2-TON TRAILER.**

Write for Catalogues containing Photos of Vehicles for all Classes of Work.

N.Z. REPRESENTATIVES— **NORMAN HEATH & CO.,**  
HUNTER STREET - - - - - WELLINGTON.

CANTERBURY AGENTS :

**HILSON & CATTO,**  
114 Manchester Street, CHRISTCHURCH.

OTAGO AGENTS :

**KEITH RAMSAY,**  
19 Vogel Street, DUNEDIN.

Highest Award at St. Louis Exposition, 1904.

# Nobel's Explosives

GLASGOW,

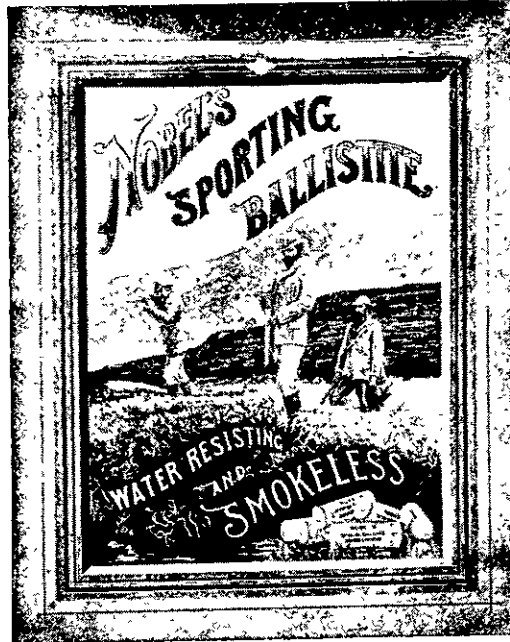
Gained the  
Highest Award,

THE  
**"GRAND  
PRIX,"**

For Excellence  
of Manufactures.

Cartridges loaded  
with Nobel's Sporting  
BALLISTITE and  
"EMPIRE" SMOKE-  
LESS POWDERS are  
Unequaled.

USED BY  
SPORTSMEN  
ALL OVER THE  
WORLD.



WHOLESALE AGENTS :

**W. M. BANNATYNE & CO., Ltd.,**  
WELLINGTON.