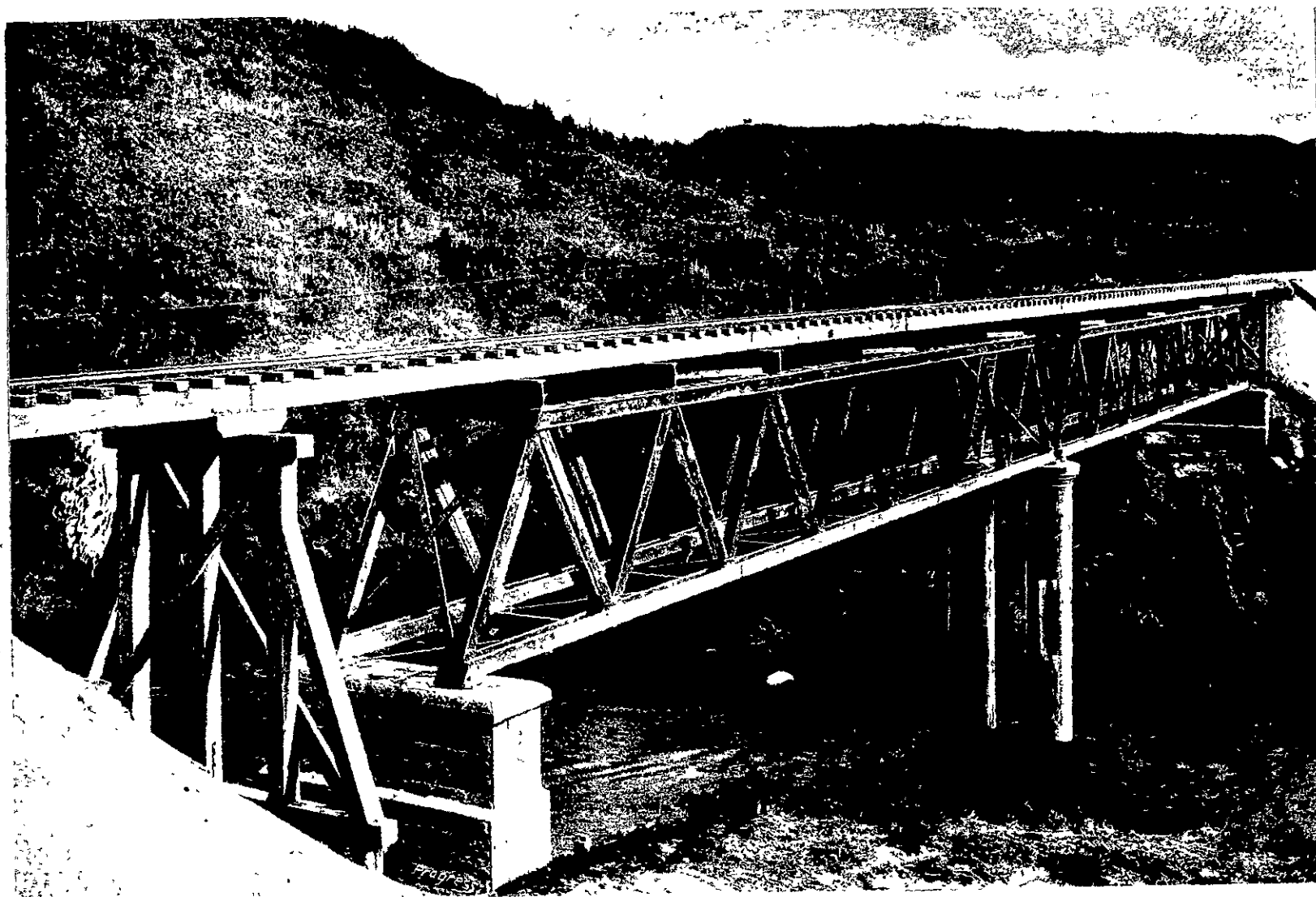
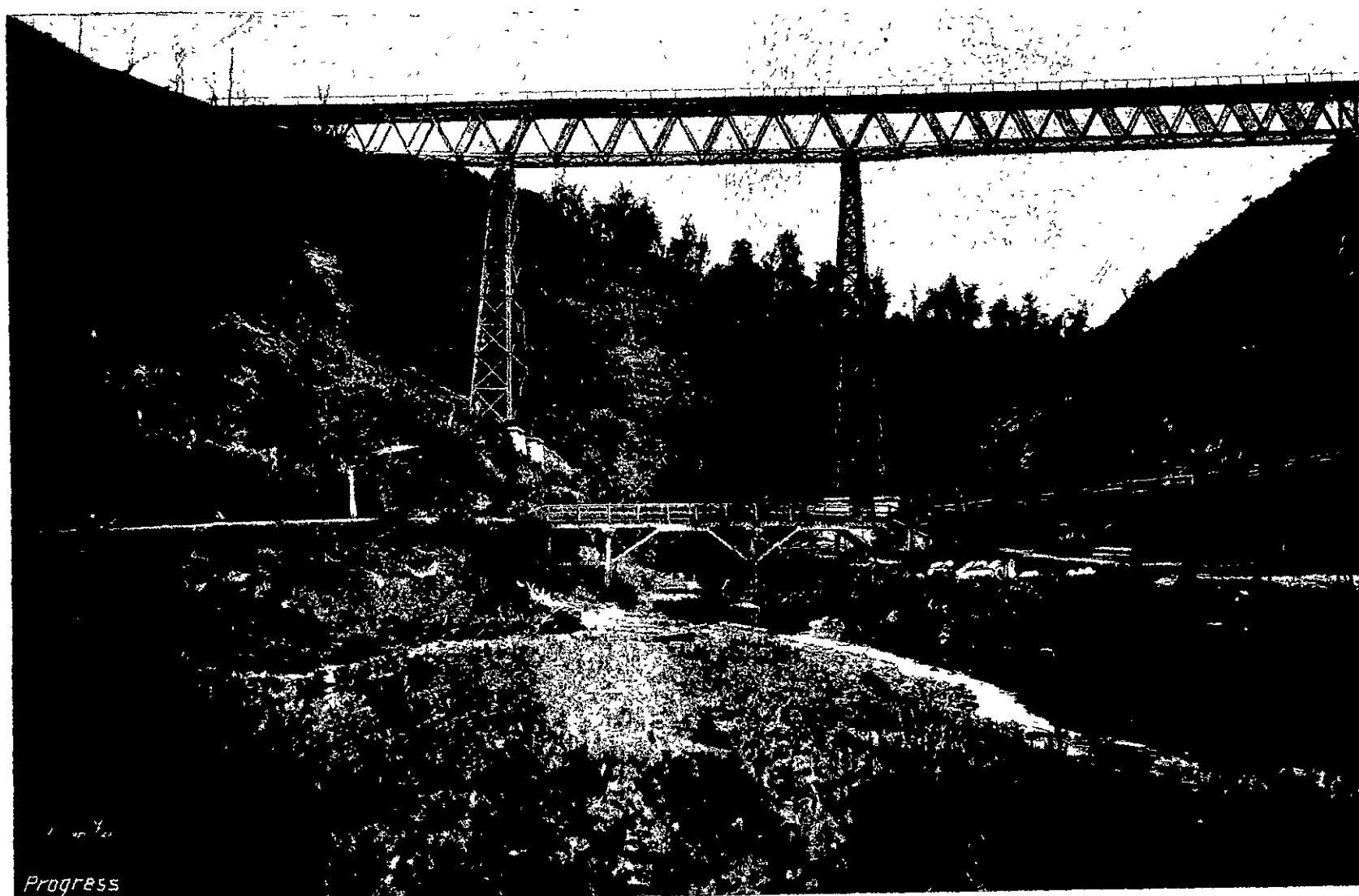


## NORTH ISLAND MAIN TRUNK RAILWAY.



ONGARUE RIVER BRIDGE (No. 1 CROSSING). One 11 ft., four 20 ft., and two 100 ft. spans. Height from River bed to rail level, 60 ft.



MAKOHINE VIADUCT. One centre span, 176 ft., two side spans, 247 ft., and two end spans, 40 ft. Height from river bed to rail level, 237 ft.