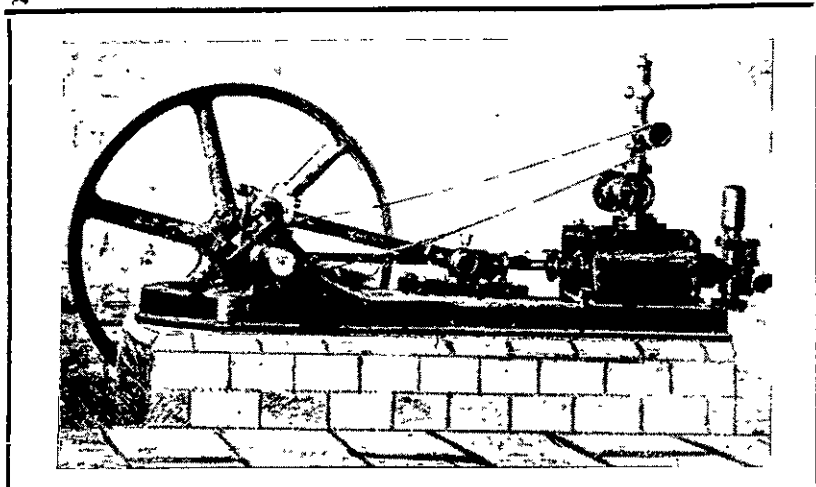


S. LUKE & CO., LTD.

Engineers, Iron & Brass Founders, and Boilermakers.



Manufacturers of all kinds of Hydraulic Machinery, Mining Machinery, Flax Machinery, Dredge Machinery, Marine Engines and Boilers.

TE ARO FOUNDRY,

Wellington.

TELEPHONES—
Engineering Works, No. 89. Offices and Stove Department, No. 358.

"EVER READY"

CAN BE USED IN STORM OF WIND OR RAIN.

PORTABLE ELECTRIC NOVELTIES.

Highest Class. Simple. Absolutely Safe.

Invaluable to Clergy, Doctors, Travellers, Police, Farmers, Householders, EVERYONE!

MANUFACTURED AS TORCHES, POCKET LIGHTS, CLOCKS, CANDLES, HAND-LAMPS, &c., &c.

PRICES FROM 10s. UPWARDS.

SPECIAL FEATURE.—All Accessories including the Famous Dry Battery Re-Fills obtainable FRESH from the Colonial factory. If not procurable locally, write direct to

N.Z. MANUFACTURING & IMPORTING CO.

3, WILLIS STREET - WELLINGTON.

Sole New Zealand Agents.

THE SOUTH BRITISH FIRE & MARINE INSURANCE CO. OF NEW ZEALAND.

CAPITAL, £1,900,000. ACCUMULATED FUNDS, £470,000.

Head Office: - - QUEEN STREET, AUCKLAND.

THE following Risks are accepted at lowest current rates: Fire, Marine, Mortgagees' Indemnity, Employers' Liability, Workers' Compensation, Ordinary Accident, Public Risk, Plate Glass, Burglary, Fidelity Guarantee.

The South British Company's "Up-to-Date" Policy is the most liberal yet offered to the public in New Zealand.

BRANCHES AND AGENCIES IN N.Z.—Auckland, A. S. Russell; Christchurch, C. H. Croxton; Dunedin, R. M. Clark; Greymouth, Nancarrow & Co.; Hokitika, J. H. Wilson; Nelson, H. E. Edwards; Taranaki, Bauchope & Webster (New Plymouth); Wanganui, M. Jones; Wellington, C. W. Benbow; Napier, A. E. Kight; with Agencies throughout the World.

London Office: Jerusalem Chambers, Cornhill, E.C.

JAMES KIRKER, General Manager.

ANDREWS & BEAVEN,

CANTERBURY . . MACHINE WORKS

Christchurch.

Confine their attention to a few lines of Machines in order that they shall be Most Perfect, Up-to-Date and Reliable.

OUR LINES

CHAFF CUTTERS, all sizes for all purposes.

SEED CLEANERS, for all seeds, for Merchants and Farmers.

GRAIN CRUSHERS and GRINDERS. POTATO DIGGERS.

KEROSENE OIL ENGINES.

Full particulars posted to those who require information about any of these machines.

HOUSES AND LAND

FOR SALE BY PRIVATE TREATY OR AUCTION.

Consult us for Properties in Town or Country.

We also make a specialty of Outdoor and Clearance Sales of all Descriptions.

Sales Held Daily in our Commodious and Central Rooms in Manners Street (next Opera House).

SIDEY, MEECH & CO.

A. R. MEECH H. M. BANNEHR.

General Auctioneers, Land and Estate Agents, Commission Merchants, Export Valuers, Etc.,

MANNERS STREET, WELLINGTON.

W. Crabtree & Sons,

CITY FOUNDRY,

Eva and Leeds Streets, Wellington.

Sawmill Machinery, Brick Machinery, Sanitary Pipe Machinery, Ornamental Ironwork for Buildings, Iron and Steel Joists, Girders, Columns, Every Description of Vertical and Horizontal Engines and Boilers.

Agents for Broadbent's Hydro-Extractors. Sub-Agents for Henry Wells Oil Co.'s Machinery and Cylinder Oils.

Contractors for Ironwork, Wellington Town Hall.

W. Crabtree & Sons,

City Foundry, Wellington.