

## Newson for Attire.

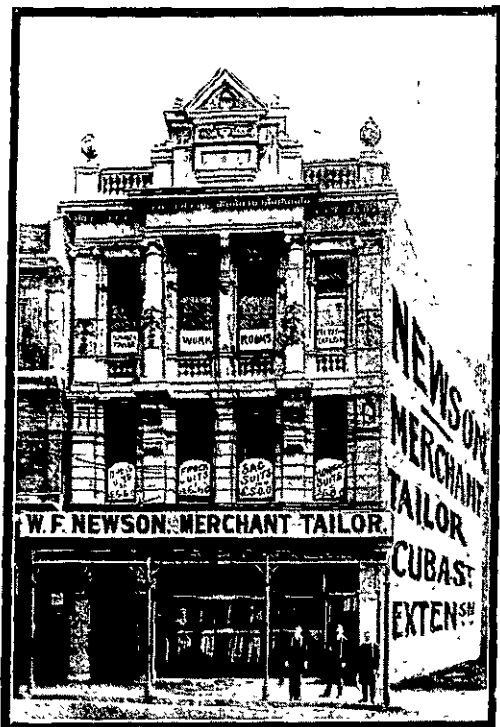
THERE'S no better sign of self-respect than a man's pride in his attire

Note the **Spotless Linen** and the **well-cut suit** which beget the confidence of a **self-respecting business man**.

These details are yours for Newson attends experientially to Mercery wants and High-class Tailoring orders for **Business, Sunday and Other Times**.

**W. F. NEWSON,**  
Merchant Tailor  
and Mercer...

30, CUBA STREET, WELLINGTON,  
3 Doors below Winder's.



## E. W. Mills & Co.,

LIMITED.

**General and  
Furnishing Ironmongers,**

SHOWROOMS:

**JERVOIS QUAY, VICTORIA & HUNTER STREETS,  
WELLINGTON.**

.... **Retail Department** ....

TELEPHONE No. 35.

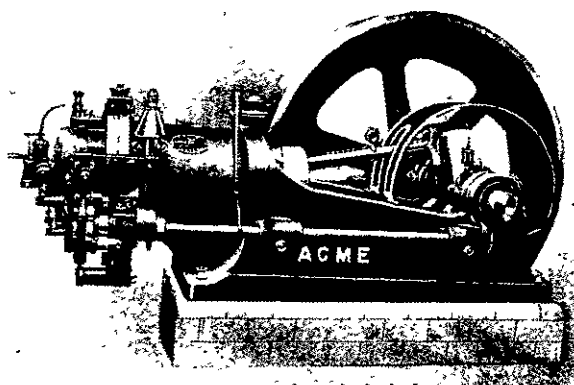
Telephone Orders promptly attended to.

## "ACME" Gas & Oil Engines

RELIABLE  
AND  
ECONOMICAL.

◆  
REQUIRE  
LESS  
ATTENTION.

◆  
DEVELOP  
POWER AT  
LOWER COST.



N.Z. Agents for Acme Engine Co., Ltd., Shettleston, Glasgow:

**J. W. Wallace & Co.,**  
54, VICTORIA STREET WELLINGTON.

## MERIDIAN LAMPS

Twice as efficient as Ordinary Glow Lamps. Light immediately on Switching on. **LAST LONGER.** Cost of Renewals same as Glow Lamps. **No Delicate Parts** to get out of order.

PERFECT DIFFUSION OF LIGHT.

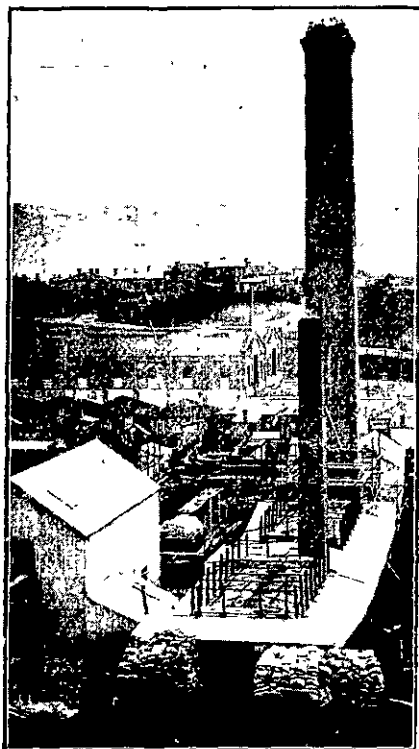
GENERAL ELECTRIC CO.'S Generators, Motors, Arc Lamps and Appliances Supplied from Stock.

ELECTRIC MOTOR DRIVES FOR MILLS, FACTORIES  
...AND WORKSHOPS...

Estimates Furnished for Electric Lighting and Power Installation of any Magnitude.

**A. E. BROWN,** Electrical Engineer & Contractor,

Office and Workshop: **MARTIN STREET,  
CHRISTCHURCH.**  
Off Manchester Street.



(Dry Press Brick Works, Newtown. Stack 140ft high.)

## PETER HUTSON

& CO., LTD.,

PIPE AND POTTERY WORKS:  
**WALLACE STREET,**

DRY PRESS BRICK WORKS:  
**MANSFIELD STREET,  
WELLINGTON.**

EVERY DESCRIPTION OF  
EARTHENWARE  
MANUFACTURED.

FIRE-BLOCKS AND FIRE-  
BRICKS A SPECIALITY.  
GUARANTEED TO STAND  
ANY HEAT REQUIRED.

Cement and Lime Merchants.

Registered Office  
and Showroom:

3, HUNTER ST., CITY.

## F. STAPLES,

102 LAMBTON QUAY, WELLINGTON.

Telephone 243. (Next Aldous.)

Plumber, Gasfitter  
Locksmith, Electrician  
and  
General Repairer.

## NEWTON KING,

Land and Stock Agent, & &  
Produce & General Merchant,

**NEW PLYMOUTH & STRATFORD**

ESTABLISHED 1879.

**Dairy Farms.**—100 Acres to 500 Acres; Easy terms of payment.

**Sheep and Cattle Country.**—500 Acres to 5000 Acres in Grass, or portion in Bush.

### SPECIAL.

3,178 Acres: 850 acres in grass, balance in bush; 600 acres rich beach land, and balance rolling country, with suitable buildings, dairy factory, &c., £8,500.

**DICKINSON,**  
CIGARETTE MANUFACTURER,  
CIGAR IMPORTER & TOBACCONIST.

Manufacturer of  
Vice-Regal Cigarettes  
Price's Mixture.

**Grand Hotel Buildings,**  
2, High Street,  
DUNEDIN.