

ENGINES, MACHINERY, APPLIANCES, &c., WANTED AND FOR SALE.

MOTOR CARS.

THE GARAGE, 81 Manners St. Motor Cars for Sale: Beeston Humber, 6½ h.p., £225 terms; new Covert chainless, any trial, £215; Winton Touring Car, 4 seat £175. Cars cleaned and stabled from 2/6 per week. Nicholls, The Garage, 81 Manners St., Wellington.

PURCHASERS of real estate, either houses, sections or farms, should apply to H. Ernest Leighton, 9 Featherston St., or Hutt, who has the finest selection on the market.

J. O'BRIEN, Premier Asphalter. Residence J. 85 Aro St., Telephone 2187. Old work renewed at small cost. Damp courses and floors a specialty.

TO LET—OFFICES in suites, central position Lambton Quay, with strong rooms well lighted, electric elevator moderate rental. Apply The Wellington Building & Investment Company, Limited.

INVENTOR of small article likely to come into large use requires financial assistance to patent and exploit. Curwood, c/o. Baldwin & Rayward, Dunedin.

INVENTOR of small article likely to come into large use requires financial assistance to patent and exploit in foreign countries, or will dispose of part interest in same. Apply Te Uku, c/o Baldwin & Rayward.

WANTED—Everyone to know that they can have their old electroplate ware made equal to new; Bedsteads relacquered, Fenders, Lamps, Screens, etc., antique coppered; Bicycle and Coach-builder's work Nickel or Brass Plated; Electroplating of all descriptions executed at the Sterling Electro-Plating Co., 34 Lower Cuba street, Wellington.

WANTED KNOWN—All Classes of Electro-Plating and Engraving executed at Chas. H. Williams & Sons, 85 Willis street, Wellington. We are not experimenters, but have been established over 30 years. Write for Price List.

WALTER GEE & COMPANY—Manufacturers of Self-coiling Revolving Shutters and Venetian and Holland Blinds of every description. Factory 45 Quin St., off Dixon St., Wellington.

PICTURE FRAMING executed in all the latest and most up-to-date styles; Antique Brown Stained Moulding a specialty. Write for our illustrated catalogue. R. & E. Tinney & Co., Ltd., Wellington.

REXETTE TRI-CAR FOR SALE. Low Price. 5 h.p., water cooled, De Dion pattern engine; two speeds, handsomely upholstered, seat two, climb any hills. Herbert H. Smith, Farish St., Wellington.

ACCOUNTANT having about £500 capital requires partnership in established business, Address, J.B., c/o. PROGRESS.

ENGINEER desires appointment works manager, North Island, first class qualifications. Engineer, Box 39, Te Aro.

N.Z. RETAILERS' PROTECTION ASSOCIATION.

**Trade Enquiry Agents
Trade Assignees
Trade Debt Collectors**

HEAD OFFICES—**Gloucester Chambers,
CHRISTCHURCH.**
AGENTS EVERYWHERE.

Hughes & Hansford, Builders and Contractors.

Winchester Street,
North Linwood,
Christchurch.

TELEPHONE 1046.

A. H. WEBB, Builder & Contractor, CHRISTCHURCH.

MACHINE JOINERY WORKS:
Corner of MONTREAL AND BROUGHAM STREETS,
SYDENHAM.

Estimates furnished for all classes of Build-
ings, &c., Town or Country.

A. Menzies, Plasterer.

202 Moorhouse Avenue.
Christchurch.

TELEPHONE 1061.

Plans & Estimates
Furnished.

Ashton & White, Builders and Contractors.

Joinery Works
188 Madras Street,
Christchurch.

THOMAS ANDREWS,

PLAIN AND ORNAMENTAL
Plasterer and Architectural Modeller.

Importer of Every Description of Plasterers'
Materials.

Fibrous Ceilings and Cornices a Specialty

PLASTER AND CEMENT YARD:
154 OXFORD TERRACE AND GLOUCESTER STREET,
CHRISTCHURCH.

MOLLER & YOUNG
ENGRAVERS
BRASS LABELS & NAME PLATES
STEEL & RUBBER STAMPS
STENCIL & LETTER CUTTERS
DIE SINKERS
ETC.
TELEPHONE 1677 G.P.O. Box 333
COR. MANCHESTER & WORCESTER STS
CHRISTCHURCH

H. A. FLATMAN, Locksmith, Gunsmith & General Machinist,

Office Locks, Keys and Bells receive
immediate attention.
Safes, Guns, Locks, Lawn Mowers and Type-
writers attended to.

H. A. FLATMAN,
102 Oxford Terrace - CHRISTCHURCH.
(NEXT TURNBULL AND JONES.)

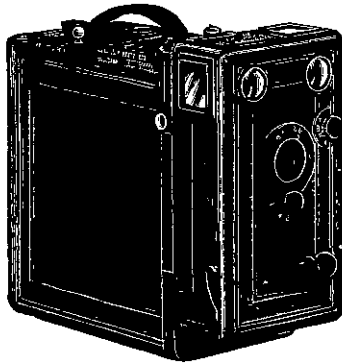
"There is a strange story connected with the safety-pin," said the American shopman. "An Englishman invented this pin some thirty or forty years ago. For this admirable invention he was highly honoured. Fetes and applause were showered upon him. If I am not mistaken the man was knighted." And about three years ago, in excavating in Pompei, they came upon—what do you think? A perfect safety-pin. Hundreds of perfect bronze safety-pins. The Englishman's invention was not new at all. It was two thousand years old. The man had been feted and honoured all his life, he had even been knighted, for an invention that he didn't invent." Which is nonsense, besides being somewhat astray in point of fact. For the reinvention of an art or device lost and forgotten for ages differs in no essential respect from an idea that is absolutely novel.

J. H. G. ROWLEY, F.N.Z.A.A.

Accountant, Auditor, and
Company Secretary,

COMMERCIAL CHAMBERS,
3 Hunter St., WELLINGTON.

Public Auditor under The Friendly Societies',
and Industrial & Provident Societies' Acts.



Established
1863.

E. Wheeler & Son Photographers.

The Photographing of Build-
ings (exteriors and interiors),
&c., and Machinery in all its
Branches we make a Special
Study of.

51 Cathedral Square,
CHRISTCHURCH.

FINANCIAL.

WHEN you want to invest your money in a good
safe investment, that doesn't mean put-
ting it in the bank at 3 per cent. per annum,
just drop us a line and ask us to submit
something for your consideration. **We are**
Investment Brokers and have always got
several good things on hand—safe as the
bank, but better interest. We study our
clients' interests. It pays us. Better get
acquainted with our methods.

J. S. SCHWARTZ & CO., Brokers,

176 Hereford Street,
BOX 568, G.P.O. CHRISTCHURCH.