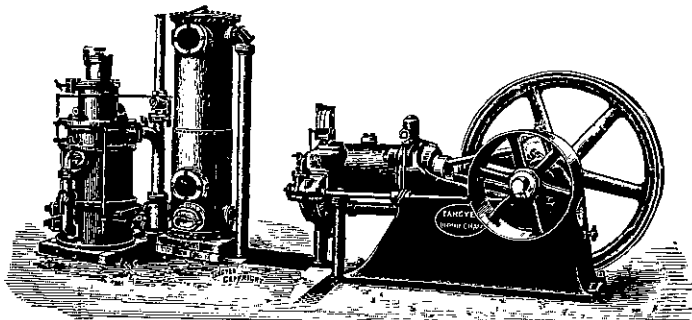


THE "TANGYE"

For use with
Anthracite
or Gas Coke.

Gas Engine and Suction Gas Producer



ON ORDER FOR, OR SUPPLIED INTO, THIS COLONY:

CES Size ..	FOR	4½	MAXIMUM B.H.P.
FS Size ..	FOR	9	" "
JS Size ..	FOR	29	" " (two on order)
KS Size ..	FOR	39	" "
OS Size ..	FOR	88	" "
PS Size ..	FOR	115	" "

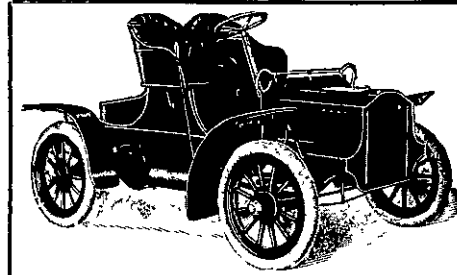
Catalogues, Quotations and Copies of Testimonials on
Application.

Working with Gas Coke it is a **SAFE STATEMENT** that
50 BRAKE HORSE POWER can be produced at a cost of
10d. PER HOUR.

SOLE REPRESENTATIVES:

JOHN CHAMBERS & SON, Ltd.
AUCKLAND, WELLINGTON, DUNEDIN, CHRISTCHURCH, WANGANUI.

The "CADILLAC"



The
Car
that
Climbs.

Sole Agent for Wellington and Wairarapa
Districts, from whom Catalogues and all
Particulars can be obtained:

Frank C. Matthews.

MATTHEWS' MOTOR GARAGE,
12 TARANAKI STREET EXTENSION . . . WELLINGTON.

MERIDIAN LAMPS

Twice as efficient as Ordinary Glow Lamps. Light immediately
on Switching on. **LAST LONGER.** Cost of Renewals same as
Glow Lamps. No Delicate Parts to get out of order.

PERFECT DIFFUSION OF LIGHT.

GENERAL ELECTRIC CO.'S Generators, Motors, Arc Lamps and Appli-
ances Supplied from Stock.

ELECTRIC MOTOR DRIVES FOR MILLS, FACTORIES AND WORKSHOPS.

Estimates Furnished for Electric Lighting and Power Installation of any Magnitude.

A. E. BROWN, Electrical Engineer & Contractor,
Office and Workshop: MARTIN STREET,
Off Manchester Street. **CHRISTCHURCH.**



STRAKER STEAM VEHICLE

(As Supplied to the AUCKLAND and WELLINGTON
CITY COUNCILS for Haulage of Road Metal)

**CAPABLE OF CARRYING 5 TONS
AND DRAWING 2-TON TRAILER.**

Write for Catalogues containing Photos of Vehicles for all Classes of Work.

N.Z. Representatives—

Norman Heath & Co.,
HUNTER STREET, - Wellington.

Highest Award at St. Louis Exposition, 1904.

Nobel's Explosives

GLASGOW,



Gained the
Highest Award,

THE
"GRAND
PRIX,"

For Excellence
of Manufactures.

Cartridges loaded
with Nobel's Sporting
BALLISTITE and
"EMPIRE" SMOKE-
LESS POWDERS are
Unequaled.

USED BY
SPORTSMEN
ALL OVER THE
WORLD.

WHOLESALE AGENTS:

W. M. BANNATYNE & CO., Ltd.,
WELLINGTON.