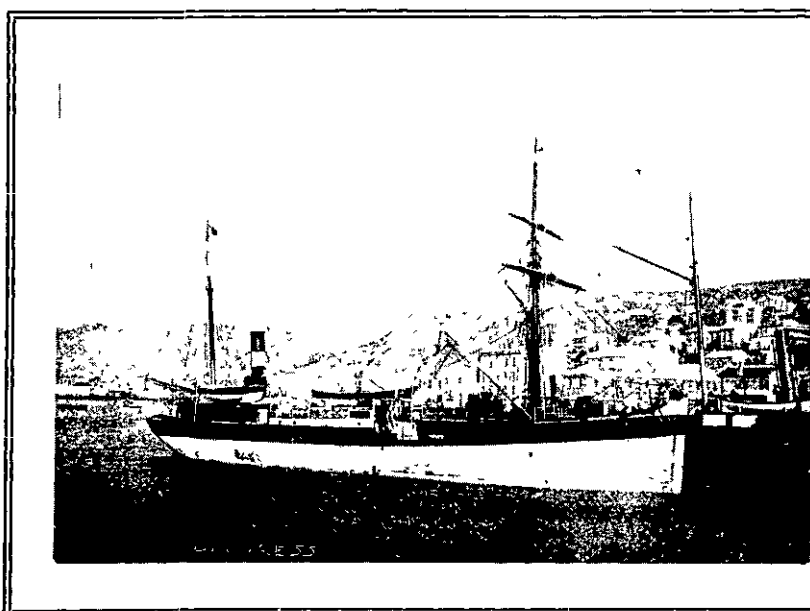
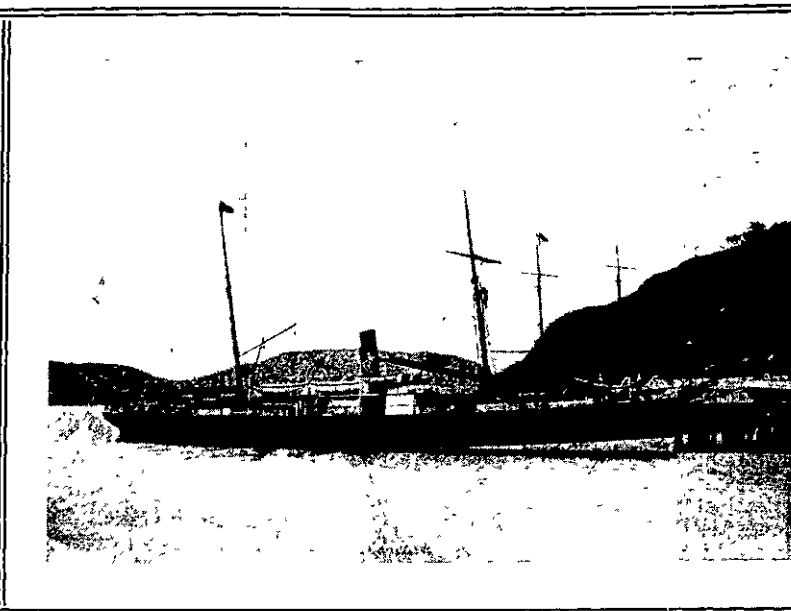


## THE PRIDE OF OUR MERCANTILE MARINE 25 YEARS AGO.



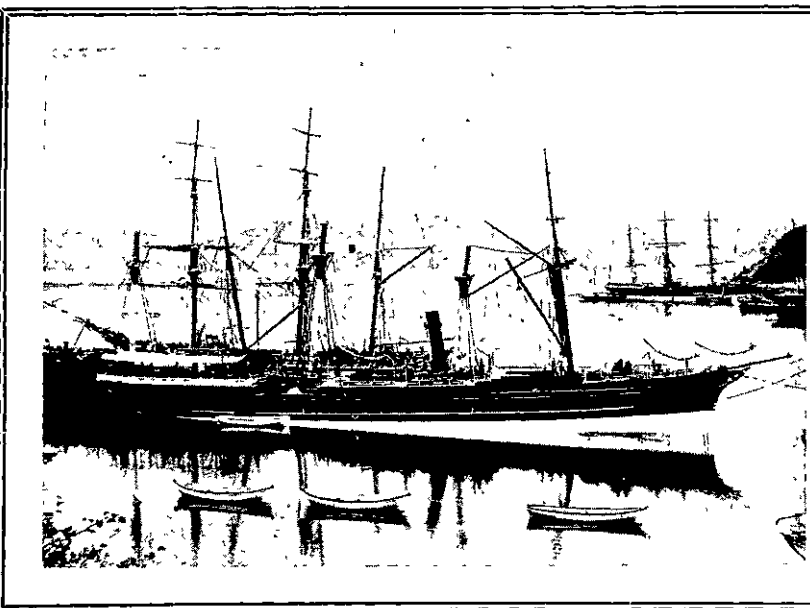
THE KIWI, 195 TONS, BUILT IN 1874 BY HUMPHRYS AND PEARSON, HULL, FOR LEVIN AND CO., WELLINGTON. THIS LITTLE VESSEL WAS THE PIONEER IN THE CARRIAGE OF WOOL FROM EAST COAST PORTS TO WELLINGTON, AND WAS WRECKED IN THAT TRADE.

*Photo supplied by Mr. Fuller, Wellington.*



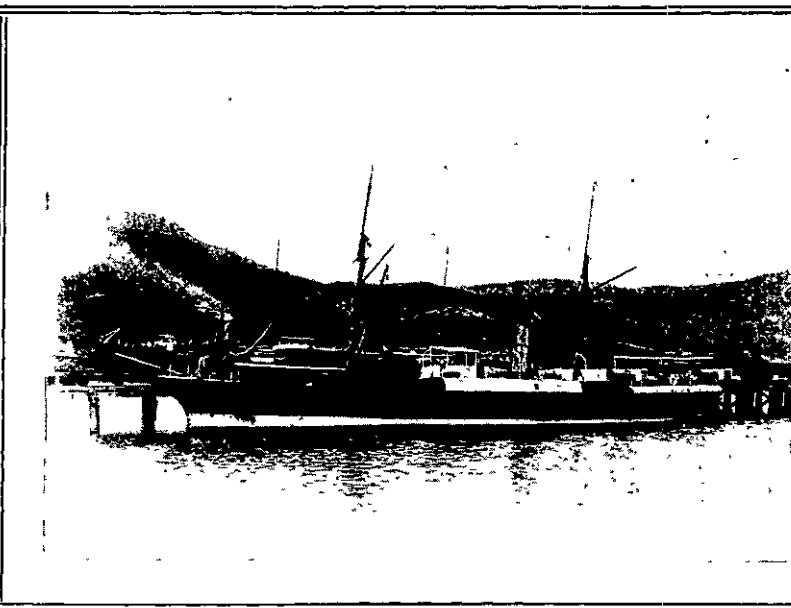
THE RINGAROOMA, 1096 TONS, BUILT IN 1875 BY T. WINGATE AND CO., GLASGOW, FOR MCMECKAN, BLACKWOOD AND CO. A SISTER SHIP TO THE ARAWATA.

*Photo by De Maus.*



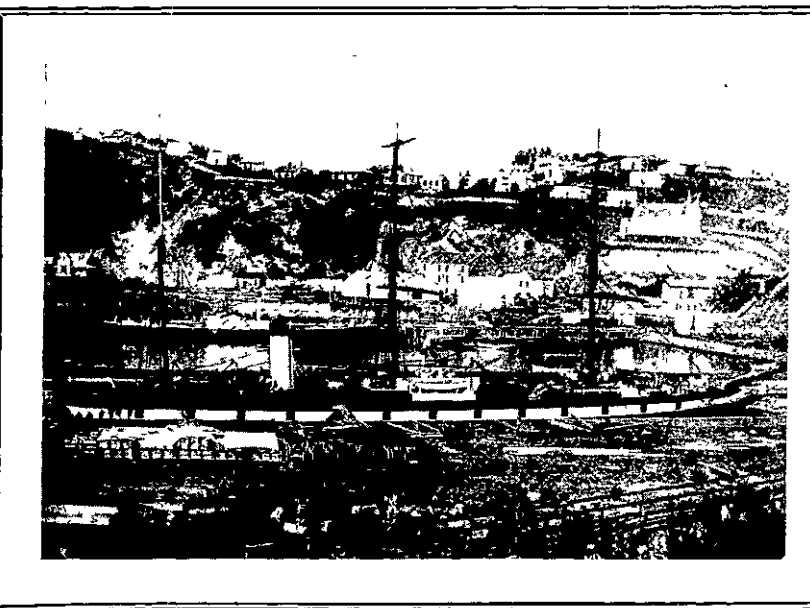
THE TAIAROA AT PORT CHALMERS IN THE "SEVENTIES." THIS VESSEL WAS ACQUIRED BY THE UNION CO. IN 1877.

*Photo by De Maus.*



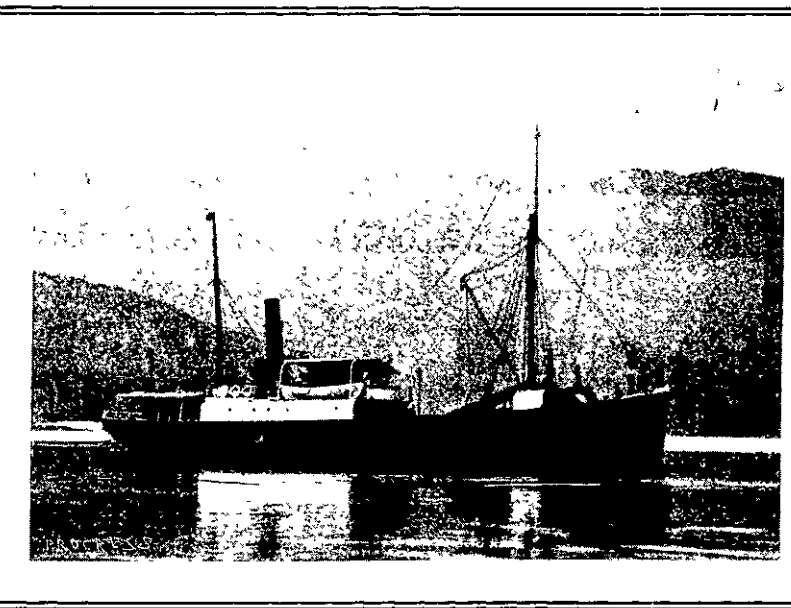
THE MAORI, 174 TONS, BUILT IN 1861 BY BLACKWOOD AND GORDON, PORT GLASGOW, FOR THE UNION STEAM SHIP CO.

*Photo by De Maus.*



THE OLD INTERCOLONIAL TRADER OMEO ALONGSIDE THE WHARF AT PORT CHALMERS 30 YEARS AGO.

*Photo by De Maus.*



THE STORMBIRD, 217 TONS, BUILT AT GLASGOW IN 1854; ONE OF THE MOST CELEBRATED VESSELS IN THE HISTORY OF NEW ZEALAND'S MERCANTILE MARINE.

*Photo supplied by Messrs. Johnston & Co., Ltd.*