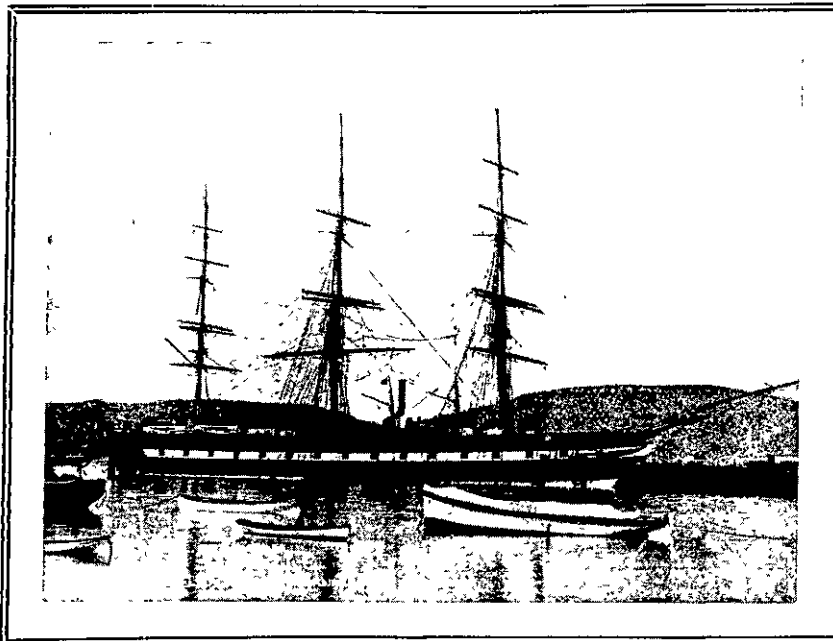
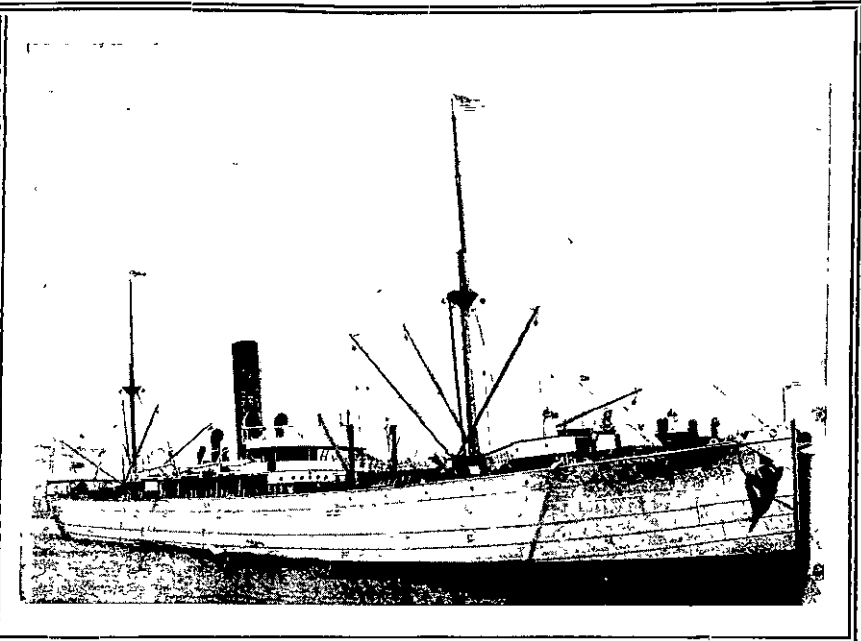


PAST AND PRESENT—New Zealand's Old-time Clippers and Modern Steamers.



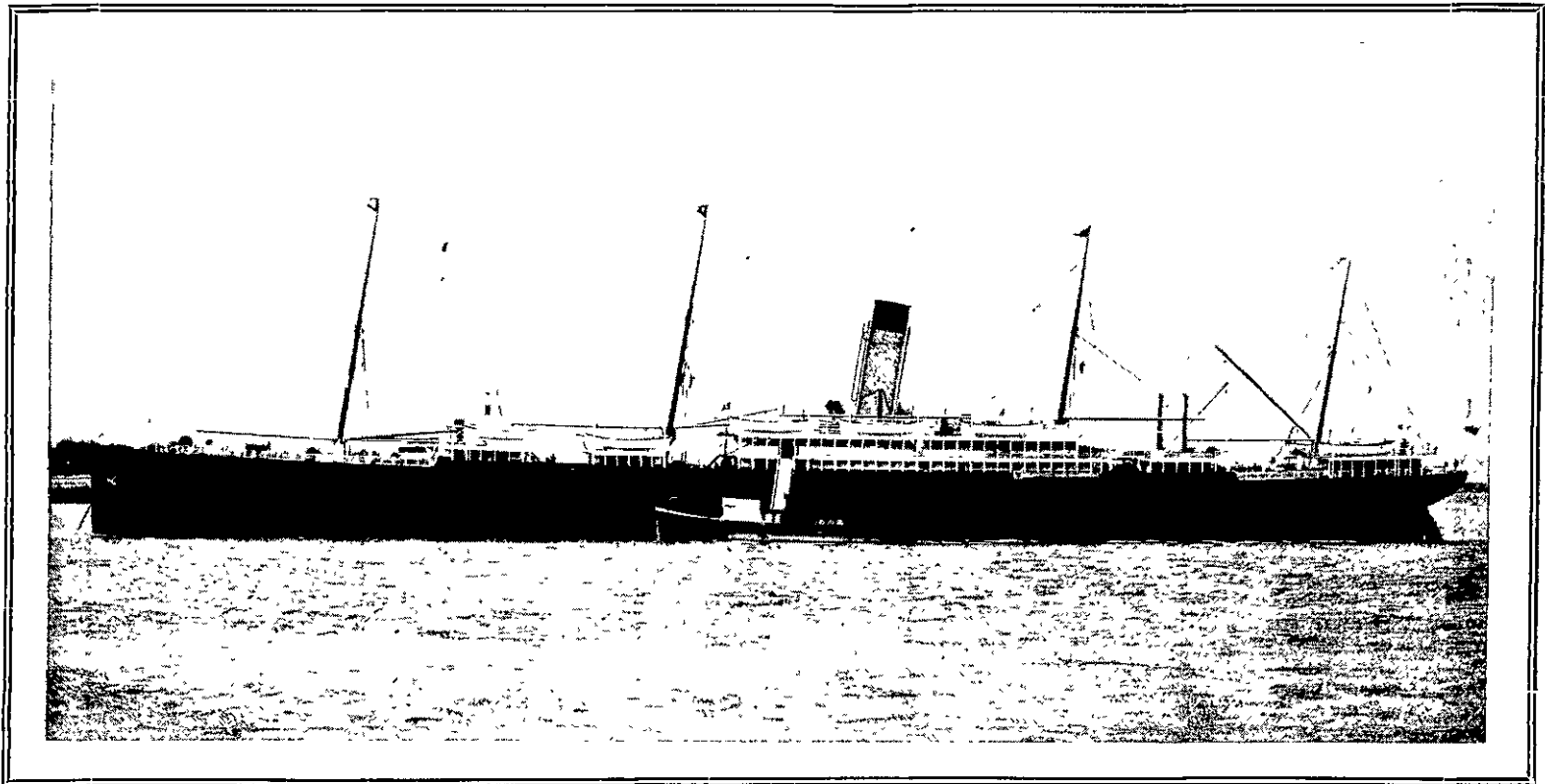
THE LADY JOCELYN, 2,138 TONS, BUILT IN LONDON IN 1852 AS A STEAMER, AND AFTERWARDS CONVERTED TO A SAILER AS ABOVE DEPICTED. THIS VESSEL FOR MANY YEARS SAILED UNDER THE FLAG OF THE SHAW, SAVILL AND ALBION CO.

*Photo supplied by Mr. F. G. Layton.*



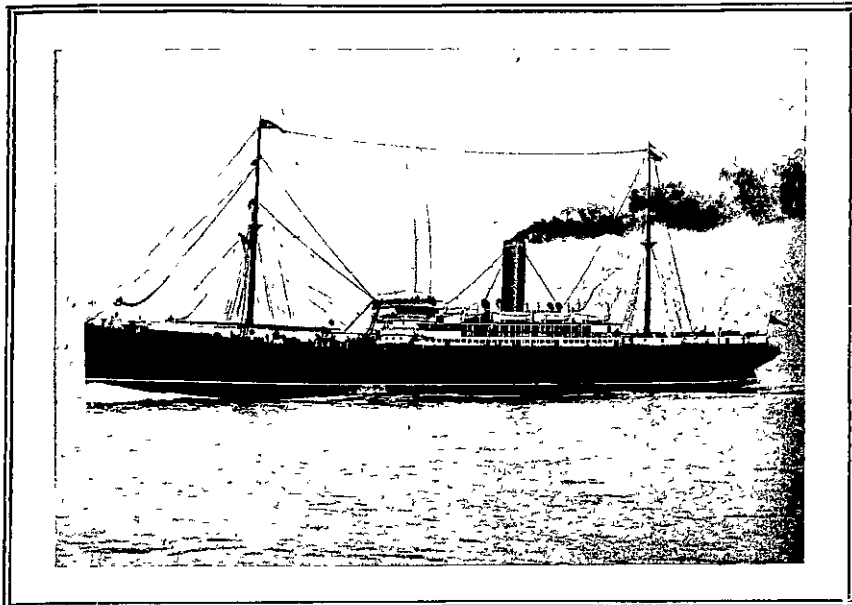
THE TYSER LINER TOMOANA BUILT IN 1899 BY SIR JAMES LAING AND SONS, SUNDERLAND.

*Photo supplied by Mr. Roberts, S.S. Tomoana.*



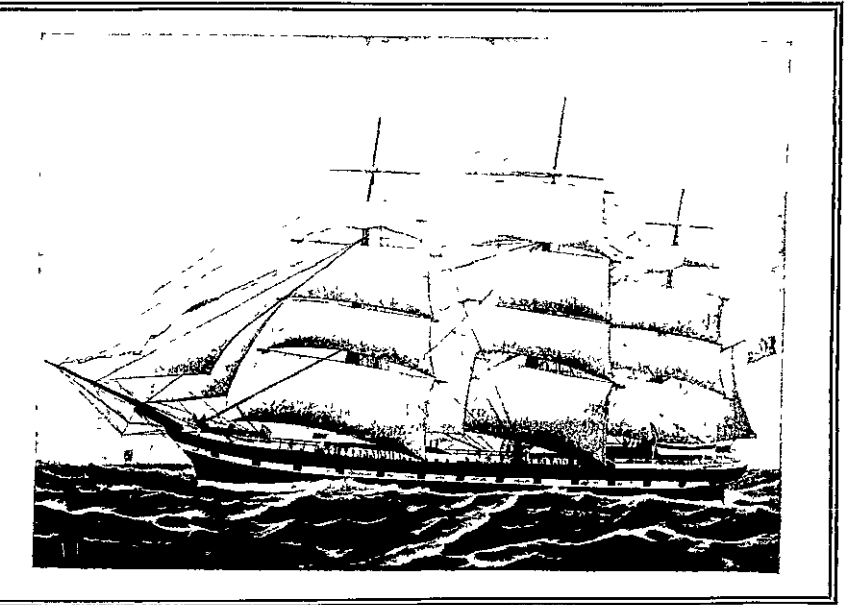
WHITE STAR LINER CORINTHIC, 12,300 TONS, TWIN SCREWS, BUILT AND ENGINEED IN 1903 BY HARLAND AND WOLFF, BELFAST.

*Photo supplied by Messrs. Levin & Co., Ltd.*



THE LARGEST STEAMER BELONGING TO THE NEW ZEALAND SHIPPING CO.—THE TURAKINA. THIS 8,000-TON TWIN-SCREW VESSEL WAS BUILT AND ENGINEED IN 1903 BY R. AND W. HAWTHORN, LESLIE AND CO., NEWCASTLE-ON-TYNE.

*Photo supplied by N.Z. Shipping Co.*



THE RANGITIKI (CAPT. POTTINGER), 1,188 TONS, BUILT IN 1863 BY THE HUMBER IRON WORKS CO., LTD., FOR THE NEW ZEALAND SHIPPING CO.

*Photo supplied by N.Z. Shipping Co.*