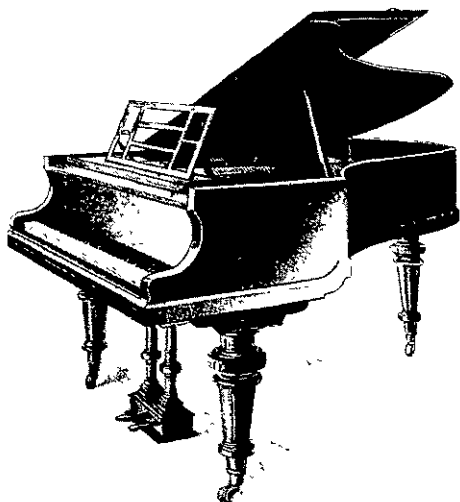


THE BLÜTHNER

World's Foremost Piano.

BRILLIANT TONE
SUPERB APPEARANCE
PERFECT CONSTRUCTION



W
Inquiries
are invited.

EASY TIME
PAYMENTS

can be arranged
when purchasing
The Blüthner.

TUNING

is carried on by
an **English Expert**,
specially brought
out for the
purpose.

Telephone 1987.

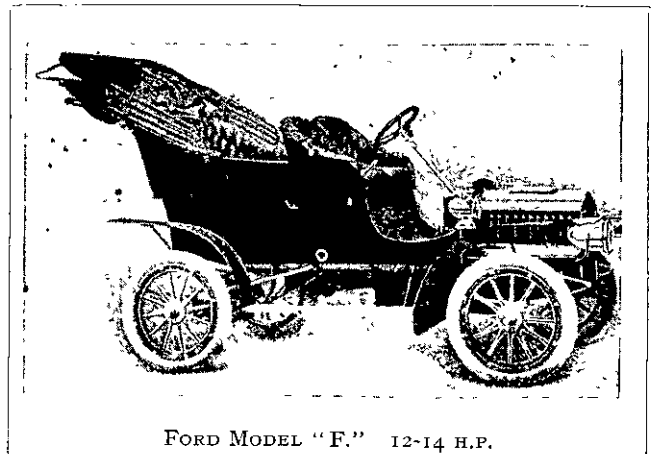
AA

WELLINGTON PIANO CO.,

LIMITED.

53 MOLESWORTH STREET, WELLINGTON.

The Successful FORD



FORD MODEL "F." 12-14 H.P.

THE General All-round Car for the man who wants a Powerful, Comfortable, and Fast Touring Car for five people, capable of taking all kinds of roads, at a moderate investment, and low cost of operating and maintaining.

Specifications of Model "F."

Motor, Ford two-cylinder horizontal opposed; weight, 1400lb; wheel base, 84in.; wheels, 30in.; tyres, 3½in. double tube: speed, 35 miles an hour; colour, rich dark green, yellow running gear.

To arrive shortly, **Ford Model "N" Runabout**, price £225. Motor, four-cylinder, vertical, 15 h.p.; speed, 40 miles an hour.

Ford Model "K"—Motor, six-cylinder; 40 h.p.; speed, 50 miles an hour, down to four miles an hour on the high gear.

SEND FOR CATALOGUES, ETC., TO N.Z. AGENTS:

THE AUTOMOBILE COMPANY OF N.Z.,
15 JOHNSTON STREET WELLINGTON.

A. & T. BURT, Ltd. Engineers,

MAKERS OF
ALL KINDS OF
MACHINERY.

DUNEDIN.

MINING MACHINERY A SPECIALITY.

DREDGES
ENGINES
BOILERS
PELTON WHEELS
PUMPS
PIPES
FLUMING, Etc.

SOLE MAKERS OF
Calder's Patent Stone Crusher.
(DOUBLE ACTING)
Capacity, 15 Tons Per Hour.
Arrangements can be made for
Crusher to be seen at work...
*This Machine is a Decided Improvement on
Existing Types.*

BRANCHES:

Wellington, Auckland, Christchurch, Invercargill, Port Chalmers.
.....ENQUIRIES SOLICITED.....

P & B

READY...

ROOFING

For
Flat
Roofs

THE PARAFFINE PAINT COY., San Francisco.

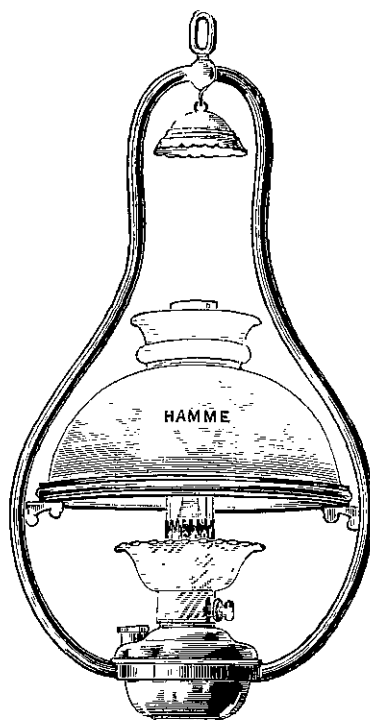
Samples and Prices from.....

ESTABLISHED 1884.

J. BURNS & CO., LTD., Auckland.
H. WILLIAMS & SONS, Napier.
JAMES W. JACK, Wellington.

E. REECE & SONS, CHRISTCHURCH.
G. L. DENNISTON, Dunedin.
THOMSON, BRIDGER & CO., Invercargill.

PATENT "TWENCENT" Incandescent Oil Lamps



60 CANDLE POWER
for less than ONE
FARTHING PER HOUR
with ordinary kerosene.

STAND AND
HANGING
LAMPS
WALL
BRACKET
LAMPS

Complete with Mantle
and Chimney

from 16/3.

Extraordinary Value.
Best British Manufacture.
Saves One-third of Oil.

WRITE OR CALL FOR PARTICULARS:

Welsbach Light Co. of Australasia,
LIMITED,
VICTORIA STREET, WELLINGTON.

AGENTS WANTED.