

Progress "Wanted" Columns.

All announcements intended for insertion in these columns must reach PROGRESS Office not later than 20th inst. Unless otherwise contracted for, cash must accompany orders for insertion. Tariff: 25 words, 2/6 (minimum); per inch, 5/-.

ENGINES, MACHINERY, APPLIANCES, &c., WANTED AND FOR SALE.

MOTOR CARS.

THE GARAGE, 81 Manners St. Motor Cars for Sale: Beeston Humber, 6½ h.p., £225 terms; new Covert chainless, any trial, £215; Winton Touring Car, 4 seat, £175. Cars cleaned and stabled from 2/6 per week. Nicholls, The Garage, 81 Manners St., Wellington.

WE have 2½ and 3½ Allday's Motor Cycles in stock. 3½ Brown's landing this month, also Allday's Motor Cars. Call on Jenkinson, Victoria St., Wellington.

PURCHASERS of real estate, either houses, sections or farms, should apply to H. Ernest Leighton, 9 Featherston St., or Hutt, who has the finest selection on the market.

SKATING—Winslow Plain and Ball-bearing Skates, ladies' or gentlemen's. Aluminium bands fitted. Trade discount. G. R. Bell, Cycle repairs, accessories, etc., 112 Willis St., Wellington.

J. O'BRIEN, Premier Asphalter. Residence 85 Aro St., Telephone 2187. Old work renewed at small cost. Damp courses and floors a specialty.

TO LET—OFFICES in suites, central position, Lambton Quay, with strong rooms, well lighted, electric elevator moderate rental. Apply The Wellington Building & Investment Company, Limited.

INVENTOR of small article likely to come into large use requires financial assistance to patent and exploit. Curwood, c/o. Baldwin & Rayward, Dunedin.

INVENTOR of small article likely to come into large use requires financial assistance to patent and exploit in foreign countries, or will dispose of part interest in same. Apply Te Uku, c/o Baldwin & Rayward.

PATENTEE of an invention, already largely adopted in buildings, is prepared to dispose of part interest in return for financial assistance to enable him to dispose of patents already obtained in foreign countries. Apply Ajax, c/o. Editor, PROGRESS.

WANTED—Everyone to know that they can have their old electroplate ware made equal to new; Bedsteads relacquered, Fenders, Lamps, Screens, etc., antique coppered; Bicycle and Coach-builder's work, Nickel or Brass Plated; Electroplating of all descriptions executed at the Sterling Electro-Plating Co., 34 Lower Cuba street, Wellington.

WANTED KNOWN—All Classes of Electro-Plating and Engraving executed at Chas. H. Williams & Sons 85 Willis street, Wellington. We are not experimenters but have been established over 30 years. Write for Price List.

WALTER GEE & COMPANY—Manufacturers of Self-coiling Revolving Shutters and Venetian and Holland Blinds of every description. Factory: Qum St., off Dixon St., Wellington.

CONSULT H. H. EKINS 12 Featherston St., Wellington, for all Repairs to Guns, Rifles, Lock Work Tennis Rackets. Keys made to any pattern. Golf Balls remade.

ROLLER SKATES—Few Pairs 1906 pattern at wholesale price. E. Reynolds & Co., Ltd., Bedford Row, Christchurch.

PICTURE FRAMING executed in all the latest and most up-to-date styles; Antique Brown Stained Moulding a speciality. Write for our illustrated catalogue. R. & E. Tingey & Co., Ltd., Wellington.

REXETTE TRI-CAR FOR SALE, Low Price. 5 h.p., water cooled, De Dion pattern engine; two speeds, handsomely upholstered, seat two, climb any hills. Herbert H. Smith, Farish St., Wellington.

ACCOUNTANT having about £500 capital requires partnership in established business, Address, J.B., c/o. PROGRESS.

ENGINEER desires appointment works manager, North Island, first class qualifications. Engineer, Box 39, Te Aro.

TELEPHONE 1046.

A. H. WEBB, Builder & Contractor, CHRISTCHURCH.

MACHINE JOINERY WORKS:
Corner of MONTREAL AND BROUGHAM STREETS,
SYDENHAM.

Estimates furnished for all classes of Buildings, &c., Town or Country.

WALLPAPERS!

SAVE MONEY by purchasing from us, and besides saving money you will get a big return in satisfaction if you secure some of the beautiful patterns we offer this season. Come and see them, whether you want to buy or not. It will be a pleasure to show things we are proud of.

R. MARTIN,
17 Manners Street - - - Wellington.
TELEPHONE 144.

THOMAS ANDREWS.

PLAIN AND ORNAMENTAL
Plasterer and Architectural Modeller.

Importer of Every Description of Plasterers' Materials.

Fibrous Ceilings and Cornices a Speciality.

PLASTER AND CEMENT YARD:
154 OXFORD TERRACE AND GLOUCESTER STREET,
CHRISTCHURCH.

TELEPHONE 1819.

159 SALISBURY ST.,
CHRISTCHURCH.

SOUTHWORTH & PETERS

Shop and Office Fitters.

MANUFACTURERS OF AIR-TIGHT
AND DUSTPROOF SHOWCASES

Write us for Free Estimates.

ESTIMATES FURNISHED.

TELEPHONE 1039.

Graham & Greig, Builders and Contractors.

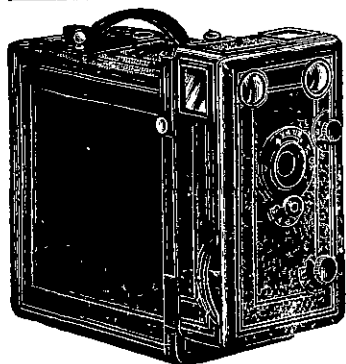
199 St. Asaph Street,
Christchurch.

TELEPHONE 1061.

Plans & Estimates
Furnished.

Ashton & White, Builders and Contractors.

Joinery Works:
188 Madras Street,
Christchurch.



Established
1863.

E. Wheeler & Son Photographers.

The Photographing of Buildings (exteriors and interiors), &c., and Machinery in all its Branches we make a Special Study of.

51 Cathedral Square,
CHRISTCHURCH.

ELECTRICAL ENGINEER, Practice and Experience in every Branch, with Certificates, gained at high-class European Institutions (Polytechnic High Schools) in connection with large European Firms and valuable investments, seeks Suitable Employment, later on Partnership, with moderate amount of capital. For further particulars, certificates, etc., kindly apply—

A.H., Engineer,
P.O., Palmerston North.

J. H. G. ROWLEY,

F.N.Z.A.A.

Accountant, Auditor, and
Company Secretary,

COMMERCIAL CHAMBERS,
3 Hunter St., WELLINGTON.

Public Auditor under The Friendly Societies', and Industrial & Provident Societies' Acts.