

F. S. GREENSHIELDS & CO.

Engineers and Importers,

Office—27, LAMBTON QUAY - - - - WELLINGTON.

CONTRACTORS FOR THE SUPPLY AND ERECTION OF
ALL CLASSES OF MACHINERY AND PLANT.....

NEW ZEALAND AGENTS FOR

Electric Construction Co., Ltd., Wolverhampton.

"Gardner" Gas Engines—Stationary and Portable Oil
Engines, Launch Engines, adapted for either Kerosene or
Benzine Fuel.

Erith's Engineering Co., Ltd. Patent Automatic Under-
feed Stokers.

TO PROGRESSIVE MANUFACTURERS AND BUSINESS MEN.

I have recently commenced business as Consulting Engineer and
Importer at No. 9 Cathedral Square, Christchurch.

Among the many well-known firms whom I am representing in this
Colony are:—

SCHUMACHER FLOUR MILL FURNISHING WORKS MELBOURNE—Improved
Flour Milling Machinery.

LANCASHIRE STEAM MOTOR CO., LEYLAND—Steam and Petrol Vehicles
and Waggon.

HEENAN & FROUD, LTD., MANCHESTER AND WORCESTER—Refuse Des-
tructors, Mining Plant, Light Railways, etc.

ELECTROMOTORS LTD., MANCHESTER—Motors and Dynamos

HOWARD BROS., LIVERPOOL—"Dey" Time Registers, etc.

ROYLES, LTD., ENGLAND—Feed Water Heaters, Valves, etc.

If you want any particulars about the above machinery please write
me. Full details and all available information cheerfully furnished on
request.

R. P. M. MANNING,

(LATE OF SYDNEY)

No. 9 CATHEDRAL SQUARE - - - CHRISTCHURCH.

Portable Chemical Fire Extinguishers.

CHEAPEST AND BEST.
NO BREAKING OF BOTTLE.
NO NEED FOR TURNING UPSIDE DOWN.
ACTS AT ONCE BY TURNING KEY.

For Factories, Workshops, Warehouses, Churches, Hotels, Shops, Places
of Amusement, Household Use.

Any capacity from 3 to 50 gal. Large Sizes set on wheels; very suitable for
Borough Councils, Factories, etc., especially those outside fire brigade
radius

MANUFACTURED BY **JAMES MERCER,**
Coppersmith, etc.

282 TUAM STREET - - - - CHRISTCHURCH.

"La Motosacoche"

The Marvellous Motor Attachment for Bicycles.

Why the "MOTOSACOCHÉ" has revolutionised
Motor Cycling:

1. Its entire absence of vibration.
2. Total weight of Motor Cycle only 60lbs.
3. Almost entire absence of noise.
4. Absolute efficiency on hills or flat.
5. Simplicity of mechanism and ease of control.

Diagrams, &c., from Sole Wholesale Distributor:

HERBERT H. SMITH . . FARISH STREET, WELLINGTON.

For Sale by all Cycle and Motor agents in New Zealand.

PETER HUTSON & CO.

LIMITED.

PIPE AND POTTERY WORKS:

WALLACE STREET.

DRY PRESS BRICK WORKS:

**MANSFIELD STREET.
WELLINGTON.**

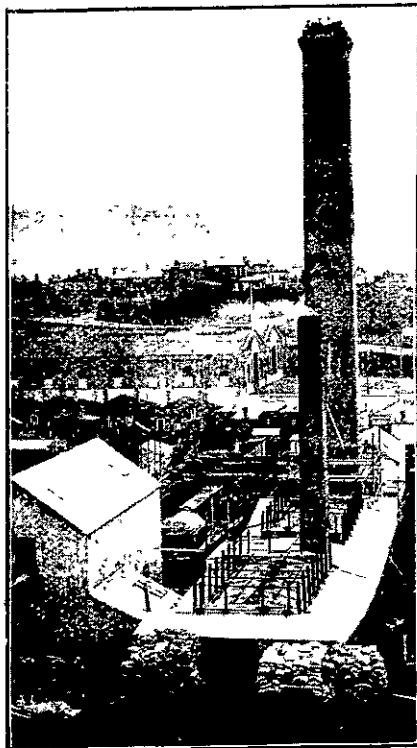
EVERY DESCRIPTION OF
EARTHENWARE
MANUFACTURED.

FIRE-BLOCKS AND FIRE-
BRICKS A SPECIALITY,
GUARANTEED TO STAND
ANY HEAT REQUIRED.

Cement and Lime Merchants.

Registered Office
and Showroom:

3 HUNTER ST., CITY.



(Dry Press Brick Works, Newtown. Stack 140ft high.)

F. STAPLES,

102 LAMBTON QUAY, WELLINGTON.

Telephone 943. (Next Aldous.)

Plumber, Gasfitter
Locksmith, Electrician
and
General Repairer.

"ACME"

Gas & Oil Engines.

Special
Reductions
for a
Month.

Large Stocks on Hand.

Engines Fitted up Free
of Charge.

SOLE AGENTS FOR N.Z.:

J. W. Wallace & Co.

54 VICTORIA STREET, WELLINGTON.

DICKINSON,
CIGARETTE MANUFACTURER,
CIGAR IMPORTER & TOBACCONIST.

Manufacturer of
Vice-Regal Cigarettes
Price's Mixture.

Grand Hotel Buildings,
2, High Street,
DUNEDIN.