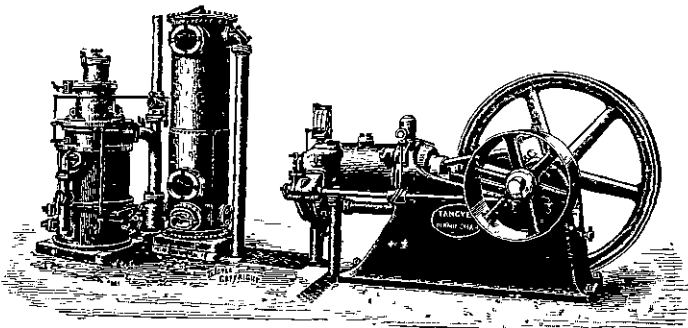


THE "TANGYE"

For use with
Anthracite
or Gas Coke.

**Gas Engine and
Suction Gas Producer**



ON ORDER FOR, OR SUPPLIED INTO, THIS COLONY:

CES Size ..	FOR	4½	MAXIMUM B.H.P.	
FS Size ..	FOR	9	"	"
JS Size ..	FOR	29	"	(two on order)
KS Size ..	FOR	37	"	"
OS Size ..	FOR	88	"	"
PS Size ..	FOR	115	"	"

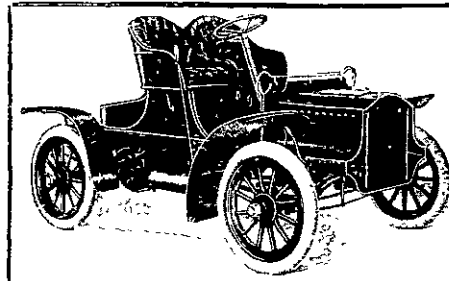
Catalogues, Quotations and Copies of Testimonials on
Application.

Working with Gas Coke it is a SAFE STATEMENT that
50 BRAKE HORSE POWER can be produced at a cost of
10d. PER HOUR.

SOLE REPRESENTATIVES:

JOHN CHAMBERS & SON, Ltd.
AUCKLAND, WELLINGTON, DUNEDIN, CHRISTCHURCH, WANGANUI.

The "CADILLAC"



The
Car
that
Climbs.

Sole Agent for Wellington and Wairarapa
Districts, from whom Catalogues and all
Particulars can be obtained.

Frank C. Matthews.

MATTHEWS' MOTOR GARAGE,
12 TARANAKI STREET EXTENSION . . . WELLINGTON.

MERIDIAN LAMPS

Twice as efficient as Ordinary Glow Lamps. Light immediately
on Switching on. LAST LONGER. Cost of Renewals same as
Glow Lamps. No Delicate Parts to get out of order.

PERFECT DIFFUSION OF LIGHT.

GENERAL ELECTRIC CO.'S Generators, Motors, Arc Lamps and Appli-
ances Supplied from Stock.

ELECTRIC MOTOR DRIVES FOR MILLS, FACTORIES AND WORKSHOPS.

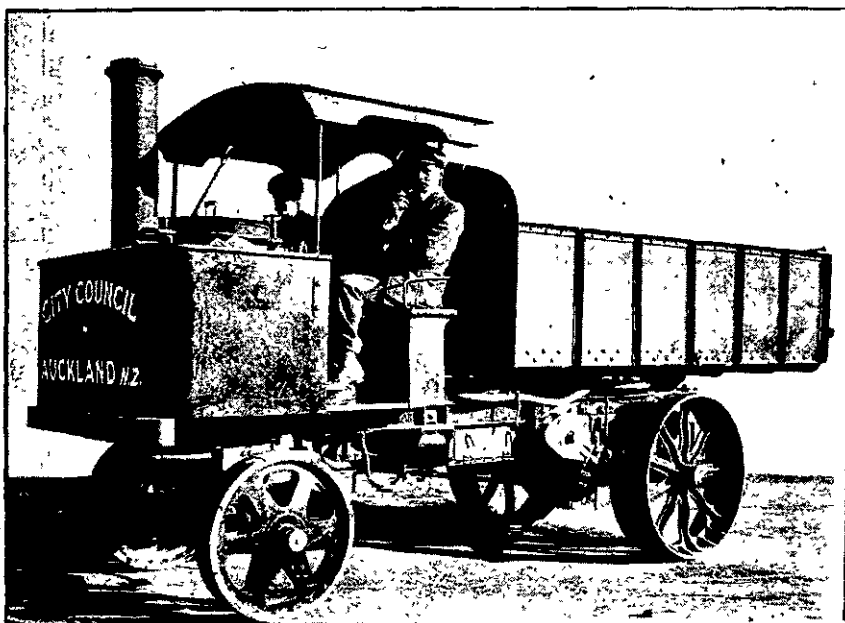
Estimates Furnished for Electric Lighting and Power Installation of any Magnitude.

A. E. BROWN, Electrical Engineer & Contractor,

Office and Workshop: MARTIN STREET,

Off Manchester Street.

CHRISTCHURCH.



STRAKER STEAM VEHICLE

(As Supplied to the AUCKLAND and WELLINGTON
CITY COUNCILS for Haulage of Road Metal)

**CAPABLE OF CARRYING 5 TONS
AND DRAWING 2-TON TRAILER.**

Write for Catalogues containing Photos of Vehicles for all Classes of Work.

N.Z. Representatives—

HEATH & ROSS,
HUNTER STREET, - - Wellington.

Highest Award at St. Louis Exposition, 1904.

Nobel's Explosives

GLASGOW,

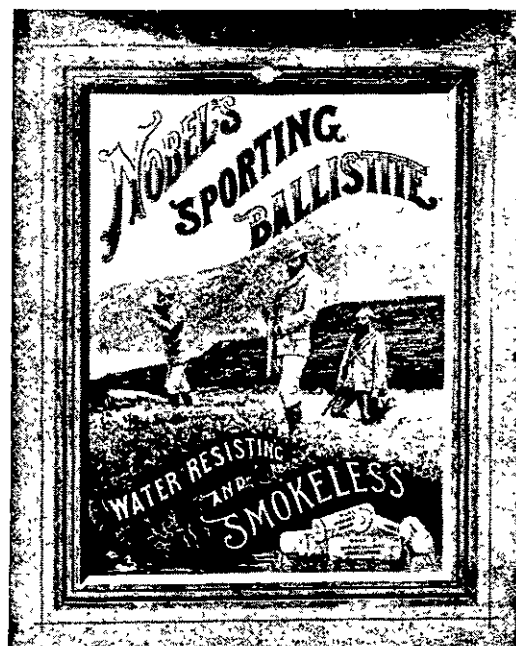
Gained the
Highest Award,

THE
"GRAND
PRIX,"

For Excellence
of Manufactures.

Cartridges loaded
with Nobel's Sporting
BALLISTITE and
"EMPIRE" SMOKE-
LESS POWDERS are
Unequaled.

USED BY
SPORTSMEN
ALL OVER THE
WORLD.



WHOLESALE AGENTS:

W. M. BANNATYNE & CO., Ltd.,
WELLINGTON.