

**GAS ENGINES.**  
**SECOND HAND**  
 1 12-h.p. "Acme" Gas Engine; 8½ cylinder, 14in. stroke, fly-wheel 5ft. diameter, tube ignition, pulley, 2ft. x 10in. face, complete with tank, piping, etc., in first-class order. Replaced by larger engine. Price £85, f.o.b., Hastings. Address "Progress" Office.

**E. W. Mills & Co.,**

LIMITED.

**General and  
Furnishing Ironmongers,**

SHOWROOMS:

**JERVOIS QUAY, VICTORIA & HUNTER STREETS,  
WELLINGTON.**

.... **Retail Department** ....

TELEPHONE No. 35.

Telephone Orders promptly attended to.

**NEWTON KING,**

Land and Stock Agent, & &  
Produce & General Merchant,

**NEW PLYMOUTH & STRATFORD**

ESTABLISHED 1879.

**Dairy Farms.**—100 Acres to 500 Acres; Easy terms of payment.

**Sheep and Cattle Country.**—500 Acres to 5000 Acres in Grass, or portion in Bush.

**SPECIAL.**

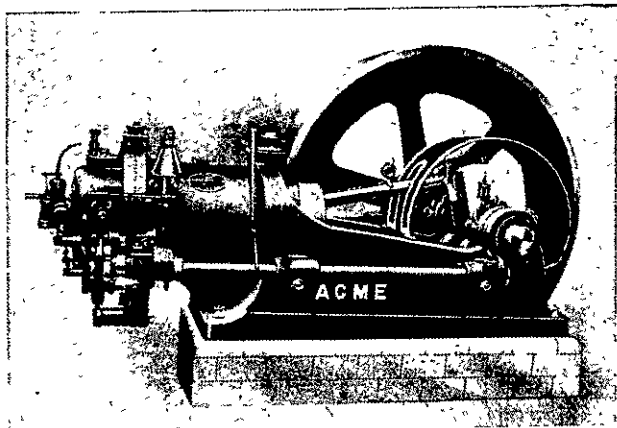
3,178 Acres: 850 acres in grass, balance in bush; 600 acres rich beach land, and balance rolling country, with suitable buildings, dairy factory, &c., £8,500.

**"ACME" Gas & Oil  
Engines**

RELIABLE  
AND  
ECONOMICAL.

◆  
REQUIRE  
LESS  
ATTENTION.

◆  
DEVELOP  
POWER AT  
LOWER COST.



N.Z. Agents for Acme Engine Co., Ltd., Shettleston, Glasgow:

**J. W. Wallace & Co.,**

54, VICTORIA STREET WELLINGTON.

**News on for  
Attire.**

THERE'S no better sign of self-respect than a man's pride in his attire.

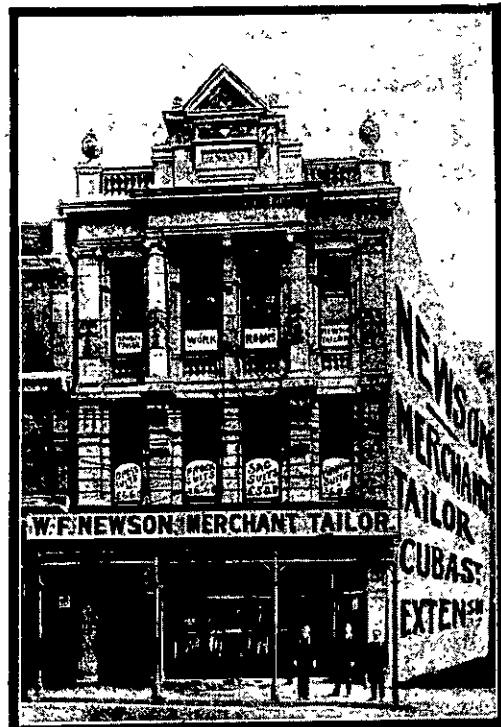
Note the **Spotless Linen** and the **well-cut suit** which beget the confidence of a **self-respecting business man.**

These details are yours, for Newson attends experientially to Mercery wants and High-class Tailoring orders for **Business, Sunday and Other Times.**

**W. F. NEWSON,**

Merchant Tailor  
and Mercer...

30, CUBA STREET, WELLINGTON,  
3 Doors below Winder's.



**The SOUTH BRITISH Fire & Marine Insurance Coy.**  
Of New Zealand.

CAPITAL..... £1,800,000.  
Paid-up Capital and Reserve Funds exceed £420,000.

**F**IRE AND MARINE RISKS of every description accepted at lowest current rates.

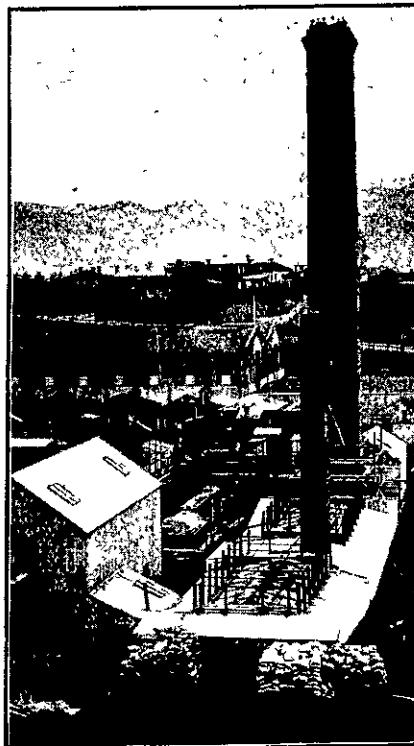
Risks against Losses arising from Lightning and Bush Fires Insured.

Wool from Sheep's Back to Final Port of destination Insured.

Prompt and Equitable Settlement of Losses.  
This being a Local Institution, and profits invested in the Colony, it is entitled to liberal support throughout the Colonies.

Branches and Agencies throughout New Zealand, Australia, Tasmania, Pacific Islands, South Africa, India, and the United Kingdom.

**JAMES KIRKER, GENERAL MANAGER.**



(Dry Press Brick Works, Newtown. Stack 140ft high.)

**PETER HUTSON**

& CO., LTD.,

PIPE AND POTTERY WORKS:  
**WALLACE STREET,**

DRY PRESS BRICK WORKS:  
**MANSFIELD STREET,  
WELLINGTON.**

EVERY DESCRIPTION OF  
EARTHENWARE  
MANUFACTURED.

FIRE-BLOCKS AND FIRE-  
BRICKS A SPECIALITY,  
GUARANTEED TO STAND  
ANY HEAT REQUIRED.

**Cement and Lime Merchants.**

Registered Office  
and Showroom:

3, HUNTER ST., CITY.

**DICKINSON,**  
CIGARETTE MANUFACTURER,  
CIGAR IMPORTER & TOBACCONIST.

Manufacturer of  
Vice-Regal Cigarettes  
Price's Mixture.

**Grand Hotel Buildings,**  
2, High Street,  
DUNEDIN.