

There's always Honest Value in Schneideman's Tailoring

IT STANDS THE TEST OF WEAR

What your clothes cost cannot be judged by the price, but by the test of wear, and wear means that the original fit and style are present after many months' service. A suit that is worn out in a few months is dear. A high-grade Schneideman Tailored To-Measure Suit that serves until the fabric itself is worn out, represents the utmost value to you. You want Style, Service, Fit, and Reliable Fabrics—you'll get them all in perfect Schneideman Tailoring.

"Schneideman's" High Grade Tailored-to-Measure Suits range from 4 guineas to 7 guineas.

Suits to Measure—To country customers who are unable to visit our store, send for our famous self-measurement form and free samples

Schneideman & Sons, Limited

TAILORS

86 MANNERS STREET, WELLINGTON.

There are some Wonderful Values in the Manchester Department

Qualities that will give a service of Satisfaction

WHITE LONGCLOTH, special silk finish; 36in wide. Price 1/4

NURSERY FLANNELETTE, cream; will rapidly bleach; absorbent; 27in wide 9/6 dozen yards

COLORS ROLLER TOWELLING, in either blue or drab, or red and drab stripe; 15in wide. Price 9d yard

WHITE TERRY TOWELS, with red border; size 24 x 50 Price 2/6 ea.

WHITE DAMASK SERVIETTES, ready hemmed; splendid value. Price 1/6 each

TAPED PILLOW CASES, made of Horrockses Calico; size 18 x 28 inches Price 1/3 each

Mail Your Order.

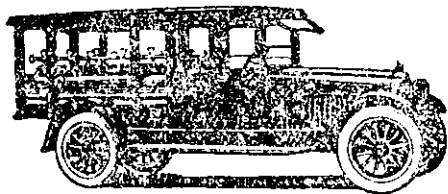
We Pay Postage.

Satisfaction Guaranteed.

Whites Limited

GROWING WITH
NEW PLYMOUTH

J. E. Taylor & Sons



Day and Night Telephone 26-073

The Catholic Undertakers and Monumental Sculptors

Private Residence, Workshop, Monumental Works, & Office—Cr. Standen Street and Main Karori Road (Cemetery Tram Stop, Karori).

Mortuary Chapel and City Office, Belcher's Buildings, Cr. Cambridge Terrace and College Street WELLINGTON

Brown Shrouds always in Stock.

Blythes

LTD.
ESTABLISHED
1872.

GENERAL DRAPERS, COMPLETE
HOUSE FURNISHERS AND
MANUFACTURERS.

EMERSON ST.
HASTINGS ST.
& DIKENS ST.

NAPIER
Also at DANNEVIRKE

THE MAIL ORDER HOUSE OF HAWKE'S BAY. For over 50 years our Business has been built upon SERVICE, name has always been associated with Quality, Value, and BLYTHES.

VISIT SUNNY NAPIER: The health resort on the Pacific: The beauty spot on the East Coast, N.Z.: The finest Parade in the Southern Hemisphere. Call in and let us show you through THE STORE.

FURNITURE!

FURNITURE

With our up-to-date plant, we can promptly execute orders in Heart Rimu, Stained Rimu, or Oak. Also Kapoc Mattresses, Bolsters, and Pillows, Wire Wove, Fabrics, and Spring Box Mattresses, Linoleums, Runners, Rugs, etc. All direct from our factory to the consumer. Quality First-class throughout. Prices strictly reasonable. Telephone 16. Write or ring

Aitken and Evans, Feilding

THIRWELL PRIVATE HOTEL MOTORUA.



3rd house from Railway gates. Electric Light, Hot & Cold Baths. High-class Catering. Porter meets all trains. Telegraphic Address: "Thirwell." Phone 20

T. P. DOWLING

Proprietor.

CENTRAL HOTEL

EMMERSON AND DALTON STREETS
NAPIER

Excellent accommodation for travelling public. Terms moderate. Commercially specially catered for. Well-equipped writing room and tennis courts now completed

Best of Liquors Stocked.

M. E. KIRK :: :: Proprietress.
Phone 286. P.O. Box 312.



Allen and Harris, Ltd.

EMERSON STREET :: NAPIER.
Day Phone, 89; Night Phone, 1029.

Manufacturers of Reliable Furniture, Upholstery, Bedding, etc. Stockists of Carpets, Linoleums, Curtains, Window Blinds, etc. Funeral Furnishers. ... Prompt Attention.