

THE John Holt

(Established 1876)

"PIONEER PEDAL

REED ORGAN

For Church and Home Use.

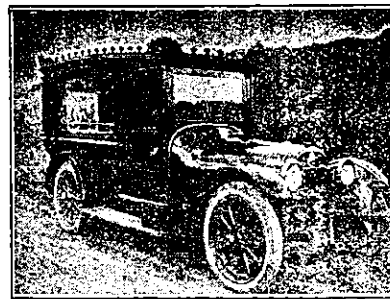
A high-class English Reed Organ, having a Console identical with that of the MODERN PIPE ORGAN.

A PERFECT INSTRUMENT FOR SMALL CHURCHES.

The unique and characteristic Organ Tone of the various stops, and the excellent touch and repetition, at the same time provide a delightful instrument for the Professional and Amateur and for home use.

These organs have been placed in two private residences in Canterbury and in S. John's Church, Lyttelton.

Organs are at present being built for St. Andrew's Church, Stratford (two manuals and pedal), the Masonic Temple, Christchurch (three manuals and pedal), the Christchurch Anglican Cathedral (two manuals and pedal), and the Temuka Presbyterian Church (two manuals and pedal). Catalogue on request to the Sole Agent for N.Z., 21a Dyers Pass Road, Cashmere Hills, Christchurch (where an instrument may be heard).



R. McLEAN AND SON

(LATE COLE & SPRINGER)
Funeral Furnishers

Phone 3192
Private Phone 410
(Day or Night)

Town and Country
Funerals.

Polished Oak and Rimu a speciality. Prices moderate.
219 GEORGE STREET. DUNEDIN.

CATECHISMS

No. 1 Catechism (No. 1)—Green Cover, 17/6 Gross.

No. 2 Catechism (No. 2)—Pink Cover, 27/6 Gross.

No. 3 Catechism (No. 3)—Blue Cover, 47/6 Gross.
(Postage Free.) (Postage Free.)

As we are selling these lines at practically cost price, cash must accompany all orders. Address orders to

MANAGER, N.Z. TABLET CO., Octagon, Dunedin.

Beath's, Christchurch, famed for Hosiery



The House of Beath's has a fine reputation for Ladies' Hosiery, built up on over sixty years' satisfactory Service.

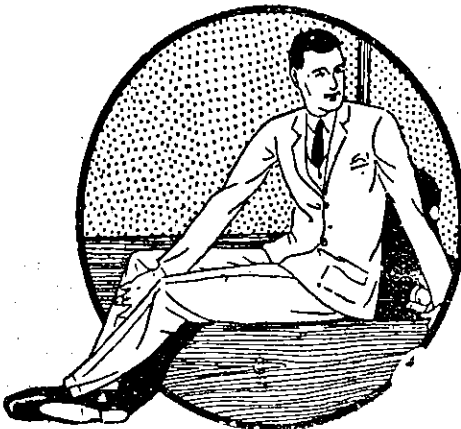
"Luxite" Hosiery, with the extra stretch ribbed top. Beauty of appearance, combined with exceptional wearing qualities. Black, White, African Brown, Otter, Log Cabin. All sizes. 7/11 pair

Our "Varibest" All-Wool Black Cashmere Hose. The quality is right. The price is low .. 2/6 pair

"Marvel" Ribbed Top Pure Silk Hose. The stocking that sets the new value standard. Available in every wanted shade at Beath's only .. 10/6 pair

Fine Mercerised Lisle Hose. Full fashioned, self striped. Dependable wearing. Black, Putty, Shoe Grey, Oyster, New Drab, Mid Grey— 8/6 pair

Any of these lines will please you. Beath's pay postage.



DRESS FOR LESS

Into every suit and costume we make, into every article of clothing we turn out, we put the same good material, the same good style that reaches the retail market elsewhere only at *top prices*. It costs us less to produce and to sell. It pays you to deal here and get the savings we can afford to allow. Prices lower than anywhere. Come to the

Wholesale Tailors and Clothiers.

McLean's, Limited

MORAY PLACE (Below First Church)

::

DUNEDIN