

Many Human Discomforts are Caused by Ill-shod Feet

The Shoes you wear are everything—either everything for comfort or they are responsible for much of the discomfort experienced during the hot days of Summer. You are, however, responsible for the shoes you wear. They may be light and cool, but ill-fitting. At that rate they might as well be anything. Trust yourself to **MOLLISON'S** where you are sure to find the shoe that fills all the demands of Summer wear. In addition, you will secure that modicum of foot comfort which makes life more worth living.

Our SPECIAL GLACE SHOE, with Cuban Heels, at 17/9 is a delightfully cool and perfect fitting Shos. This example is but one of hundreds. Come and try on a few pairs at your leisure.

R. MOLLISON & CO., OAMARU



Bonnington's—The Standard Family Cough Remedy

Time is the best test of a medicine. No matter what claims are made for a preparation, its real merits will be known ere many years. Many cough medicines have tried to secure popular favour in the past fifty years. Many failed, because performance was not equal to the claims they made. Yet, year after year, for over half a century, Bonnington's Irish Moss has steadily increased in sales and in popular favour. To-day it is the standard family cough remedy in more homes than ever before. Success is due to its exceptional merits, for no extravagant claims have been made on its behalf. Bonnington's Irish Moss is a sure and effectual remedy for coughs, colds and all chest and lung affections—for it contains no injurious drugs. Do not be put off with an imitation. Ask for and get Bonnington's—refuse the substitute of inferior quality.



BONNINGTON'S
CARRAGEEN
IRISH MOSS

4210 A

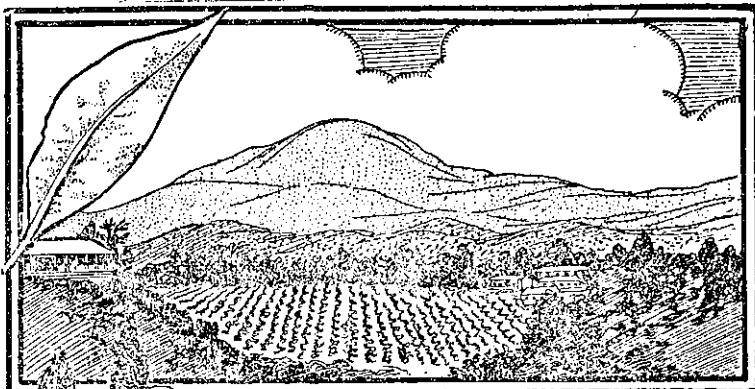
W. J. LISTER

FURNISHING UNDERTAKER,
STAFFORD STREET, TIMARU.

(Opposite Bowker's Buildings).

Residence—BANK St (next Wesleyan Church. Telephones—Shop, 142;

Residence, 157 (night or day).



THE STORY OF AMBER TIPS. The Leaf and the Plantation.

READ THE SERIES.

Tea is made from the young leaves of the plant—a busy shrub. These vary considerably in size and shape and according to variety. They contain an essential oil to which the flavour of the tea is largely due. Far away in Sunny Ceylon are the plantations where the famous Amber Tips Tea is grown. There the Amber Tips experts purchase only the finest leaf from the best estates—cheaper growths and lower grade leaves are always discarded—for an Amber Tips purchaser is accustomed to the best. The wonderful sale of Amber Tips Tea is built on quality and that quality is consistently and persistently maintained. Have you tried Amber Tips? No matter how satisfied you may be with your present brand—take a packet of Amber Tips home and test it. A tea which has so great a sale surely deserves a trial.

51

Amber
Tips Tea

Buy one of the three grades—1/8, 1/10, or 2/- per lb. and you will be delighted with it. Beware of imitations.

4176

WALLPAPERS

THIS SEASON'S LANDED
INSPECT OUR UNEQUALLED
SELECTION.

ROBT MARTIN LTD 34 & 36 Manners St